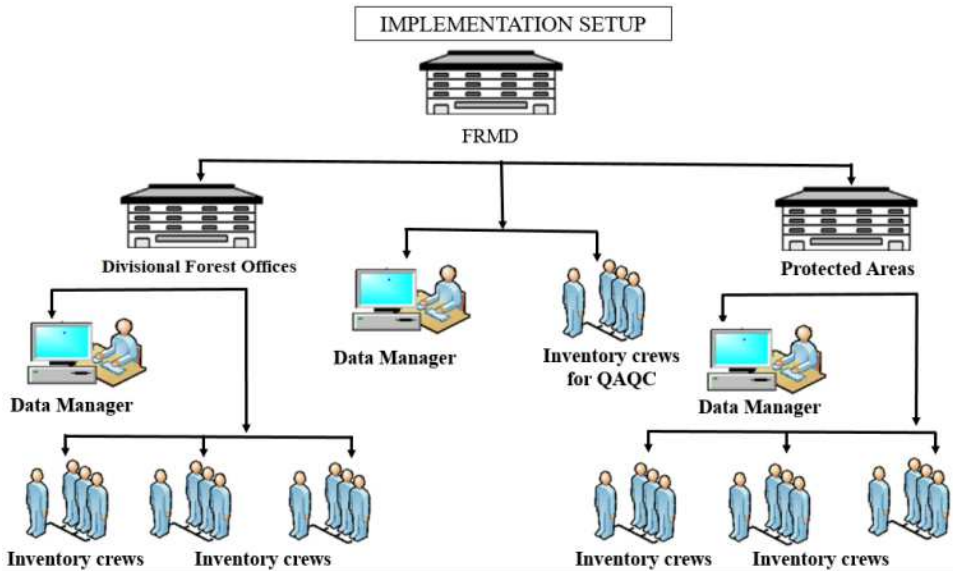




# Implementation Modality for NFI of Bhutan



February 2021  
Forest Resources Management Division  
Department of Forests and Park Services



# Implementation Modality for NFI of Bhutan



February 2021  
Forest Resources Management Division  
Department of Forests and Park Services

**Drafting and editing:**

Dorji Wangdi, Dy. Chief Forestry Officer

Kinley Dem, Dy. Chief Forestry Officer

Younten Phuntsho, Dy. Chief Forestry Officer

Norbu Wangdi (PhD), Chief Forestry Officer

# Contents

i. Foreword.....	1
1. Background.....	3
2. Rationale.....	3
3. Objectives.....	4
4. The Current State of NFI.....	4
5. Implementing NFI.....	5
5.1 Preparatory phase.....	5
5.2 Enumeration Phase.....	5
6. NFI Implementation Setup.....	6
7. NFI activities and Work Calendar.....	7
8. Roles and Responsibilities.....	8
8.1 Head of the Department.....	8
8.2 Forest Resources Management Division (FRMD).....	8
8.3 Roles and Responsibilities of Field Divisions and Parks.....	9
8.3.1 Chief Forestry Officer.....	9
8.3.2 Data Manager.....	10
8.3.4 Crew Leader.....	11
8.3.5 Crew Member.....	12
9. Distribution of NFI plots.....	12
10. Approaches for Field Work.....	14

11. Time Required for Data Collection.....	15
12. Team Formation.....	16
13. Human Resources Requirement.....	16
14. Data Collection.....	19
15. Data Management.....	19
16. Budgetary Requirement.....	19
16.1 Estimated cost for Field Work.....	20
16.2 Quality Assurance and Quality Control (QAQC).....	24
17. Field Gears and Equipment.....	24
18. Financial Management.....	26
19. Communication Channel.....	26

## Foreword

I am pleased to note that the Forest Resources Management Division (FRMD) has developed this very important document. This document is imperative for smooth implementation of second round of National Forest Inventory (NFI), considering the fact that it provides meticulous guidance on roles and responsibilities of Field Offices besides detailing out the roles and responsibilities of individuals who will be involved in carrying out second NFI of Bhutan.

Aside from enabling smooth implementation of NFI data collection through well-defined roles and responsibilities, the modality provides in-depth information on institutional and organizational set up for NFI, which is envisaged to lay foundation for institutionalizing NFI program into regular forestry activities of the Department and Field Offices under the Department. The past NFI has been carried out as a time-bound project and thus could not internalize the NFI activities within regular forestry activities of the Department. Integrating NFI within regular activities of the Field Offices is very essential considering the significance and value that NFI brings forth for enabling scientific principle based sustainable forest and natural resource management.

The National Forest Policy, 2011 also necessitates carrying out periodic NFIs to enhance knowledge on overall forest resources, biodiversity and ecosystem health across the country and to guide forest classifications, functional mapping, strategic investments and decisions. Therefore, this document will guide and help achieve this policy objectives for periodic inventories.

I hope the modality will also help facilitate smooth flow of information and allow efficient communications during the conduct of NFI through defined roles and accountability of individuals involved in NFI and ultimately enable timely and successful completion of NFI.



Lobzang Dorji

**DIRECTOR**



# Implementation Modality for NFI of Bhutan

## 1. Background

National Forest Inventory (NFI) is the systematic collection of data and forest information for assessment and analysis to continuously update volume, species composition and sustainable development. Therefore, NFI measures and records species, diameter at breast height (DBH), bole height, total height, site condition, forest type, herbs, shrubs, saplings, soil samples, etc., and are used for estimating trees per hectare, basal area, volume, biomass, carbon and forest area amongst others. These are important information on the state and dynamics of forests for strategic and management planning.

Bhutan has successfully completed the implementation of the first NFI and produced national baseline estimates of forest cover, growing stock, biomass carbon and soil organic carbon (SOC). When NFI was initiated in 2009, the idea was to establish four regional centers for coordination and implementation of field work, data collection, compilation, analysis and reporting. The establishment of the regional centers during the first phase of NFI could not be done due to budgetary and human resource constraints. However, with the experiences gained from the first NFI, it was strongly felt that establishment of coordination and implementation centers at the Field Offices will be more effective than having regional centers on account of financial and human resources. Therefore, this modality defines the NFI decentralization framework and implementation approaches for data collection, cleansing and analysis.

## 2. Rationale

Having decided to conduct NFI at a regular interval of 5 years following the government's five-year planning cycle, the decentralization of NFI to Field Offices has an advantage of a simultaneous planning, coordination and implementation process. The collection of data is anticipated and planned to take two years while data cleaning, compilation and analysis is envisaged to take at least two years. This requires that the planning of the new cycle should be started before the end of one cycle. Therefore, a simultaneous planning, coordination and implementation process is a must. Further, by decentralizing the NFI to the Field Offices, it shall provide adequate time for all the stakeholders to execute their part of work efficiently within a set timeframe.



### 3. Objectives

Having completed the first ever NFI in 2015 and recognizing all the opportunities and challenges faced by the National Coordinators and by the implementing crews in the field, this new modality aims at decentralizing the NFI implementation to the Field Offices based on all the lessons learnt from the first NFI. Broadly it aims to achieve the following objectives:

- i. Efficient utilization of government resources through strengthened capacity of forestry staff
- ii. Institutionalize and mainstream NFI into national plans and programs
- iii. Ensure strategic planning and field implementation
- iv. Develop and establish a transparent data collection and management system in Field Offices
- v. Allow the Field Offices to serve as secondary data backup in the case of data loss from the central data management system and vice versa
- vi. Ease the monitoring of activities

### 4. The Current State of NFI

The NFI uses a systematic sampling grid comprising of 2424 number of cluster plots arranged on a 4 km by 4 km grid spread across the country. The center of all NFI plots are monumented/georeferenced with galvanized iron (GI) pipes for the purpose of relocating the plots for any future forest inventories. Each cluster plot consists of 3 circular plots of 12.62 m radius placed on a “L” shaped transect at 50 m apart and referred to as the Elbow, North and East plot.

The current NFI was coordinated and implemented in a time-bound project mode by the Forest Resources Management Division (FRMD) from 2009-2015. However, given the importance and role of NFI in sustainable forest management program and environmental policy decisions relating to forest resources including Bhutan’s commitment to remain carbon neutral, the periodic NFI is necessary. Hence, second round of NFI is planned to be undertaken in 12<sup>th</sup> Five Year Plan (FYP). Unlike the first, the second round of NFI is proposed to be rolled out to the Field Offices for the objectives and rationales cited above.

## 5. Implementing NFI

The NFI process is divided into two phases; preparatory and enumeration or implementation phase.

### 5.1 Preparatory phase

This phase of NFI will involve the following activities:

- Finalizing and endorsing Implementation Modality by the Department and the Ministry;
- Equipping Field Offices with field equipment and field gears (assess the existing stock of equipment);
- Revising survey forms, data parameters to be collected and improving the overall data flow system;
- Revisiting the data parameters and collection protocol as necessary;
- Developing protocol for re-measurements including carbon plots;
- Setting up database management system at Field Offices- computers, software, training in data management; and
- Conducting training for field crews and data managers.

### 5.2 Enumeration Phase

This phase of NFI will involve the following activities:

- Collecting the data from sample plots or field work as per work calendar;
- Collecting and submitting data and samples (carbon) to Laboratories for analysis;
- Coordinating with implementing partners;
- Cleansing data cleansing by the Data managers;
- Transferring data transfer to the FRMD;

- Carrying out Quality Assurance and Quality Control (QAQC) both hot checks and cold checks to ensure quality data; and
- Analyzing data analysis and producing reports.

The enumeration phase will start from the beginning of 2021-2022 financial year (FY) and the Field Offices are expected to complete the data collection for NFI plots falling in their respective jurisdiction before the end of the 2022-2023 FY.

## 6. NFI Implementation Setup

Unlike the first NFI, FRMD shall be responsible for overall coordination of the NFI while Field Offices will be responsible for implementation of NFI within their respective jurisdictions. In view of this, each Field Office will have inventory crews and data managers in their respective offices (Figure 1). The crews will be responsible for the collection of data from the field while data managers will be responsible for data compilation, processing, submission and archiving of the data for respective office.

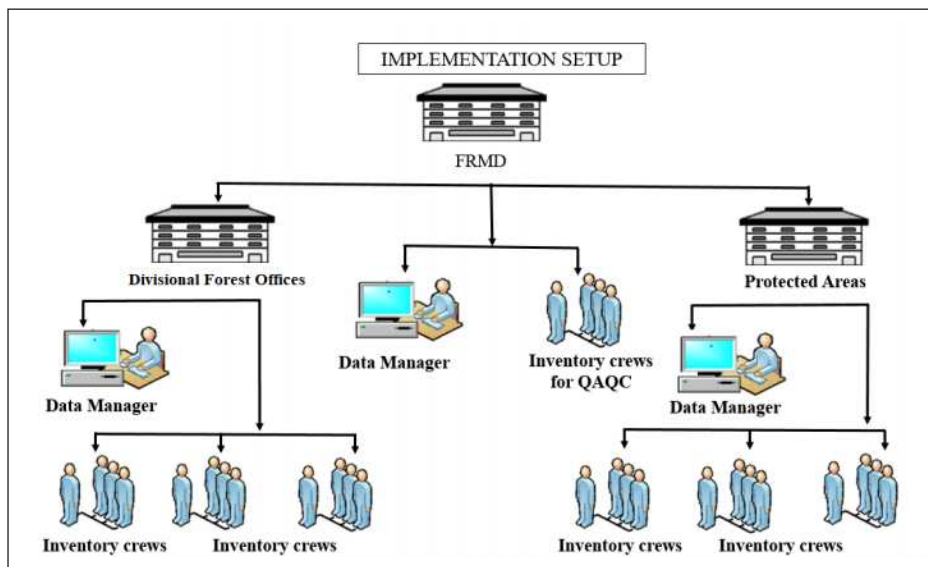


Figure 1: NFI Implementation Set Up

Besides data managers and inventory crews in the field, the FRMD will also constitute a data manager and inventory crews independent of the field entrusted with the responsibilities for national level data management and conducting quality controls for in the field.

## 7. NFI activities and Work Calendar

Table 1 shows the work calendar anticipated and projected for the 2<sup>nd</sup> NFI. The initial three years of 12 FYP is planned for procurement of inventory equipment and capacity building of the inventory crews and data managers. The field work will be carried out in 4<sup>th</sup> (2021-2022) and 5<sup>th</sup> (2022-23) year of the 12FYP and report will be published in the first year of the 13 FYP (2023-2024).

**Table 1: Work Calendar for Second NFI**

	Activity	Lead Role	Collaborator	Year					
				2018-19	2019-20	2020-21	2021-22	2022-23	2023-24
1	Preparation and finalization of implementation modality	FRMD	Field Offices						
2	Procurement of equipment, field gears, etc.	FRMD	Field Offices						
3	Preparation of field training material	FRMD	Field Offices						
4	Conduct training for nominated NFI Crews	FRMD	Field Offices						
5	Conduct training for the Data managers	FRMD	Field Offices						
6	Execute the field work for 20 districts and compile data	Field Offices	FRMD						
7	Cleansing of Data by-Data Managers	Field Offices	FRMD						
8	Analyzing data analysis and preparing reports	FRMD	Field Offices						

## 8. Roles and Responsibilities

It is imperative to define the roles and responsibilities of each partners to ensure successful conduct of NFI. Defining roles and responsibilities will also ensure efficient use of both financial and human resources besides, enabling timely and smooth completion of NFI. Therefore, roles and responsibilities of different stakeholders are defined as follows;

### 8.1 Head of the Department

The Head of the Department shall be overall in-charge of the NFI and shall:

- Provide overall guidance for NFI;
- Chair the core group meetings;
- Liaise with the Ministry and other relevant agencies for successful conduct of NFI; and
- Provide guidance and advice on financial and human resources mobilizations.

### 8.2 Forest Resources Management Division (FRMD)

The FRMD as the principal coordinating division shall:

- Implement activities of the preparatory phase;
- Review and revise NFI data parameters, as necessary;
- Coordinate the activities of NFI and ensure the implementation of the Inventory;
- Act as a storehouse of the data collected from the field, which will be processed and analyzed;
- Provide technical backstopping to the Field Offices;
- Monitor the data collection process in the field for quality assurance;
- Provide necessary resource supports to the Inventory Crew;
- Carry out capacity building programs (training and retraining) as required;

- Coordinate with other partners outside the Department (e.g Soil and Plant Analytical Laboratory);
- Arrange to obtain a security clearance as may be required from the Royal Bhutan Army Headquarters for sensitive border areas;
- Support and help Field Offices in setting up data management systems;
- Set up the QAQC team at FRMD;
- Assist to access budget for field works;
- Provide a periodic update to head of the Department on the progress of the works;
- Deliver above-ground understory and soil carbon sample to laboratory for analysis; and
- Compile the data and produce the state of forest report.

### **8.3 Roles and Responsibilities of Divisional Forest and Protected Area Offices**

The roles and responsibilities of the Divisional Forest Offices (DFO) and Protected Area (PA) Offices are divided into four levels, namely Chief Forestry Officer, Data Manager, Crew Leader and Field Crews

#### **8.3.1 Chief Forestry Officer**

The Chief Forestry Officer (CFO) is the principal coordinator of NFI field work in their respective offices and shall:

- Be a link between FRMD and field crews;
- Constitute inventory crews/teams as recommended by FRMD to collect data from plots falling within his jurisdiction or allocated to concerned DFO and PA Offices;
- Identify and appoint data manager for data management in concerned offices;
- Identify and appoint crew leader who has the capability to lead the team;
- Monitor the field work and ensure the timely completion;

- Ensure transfer of data from collect mobile (inventory crews) to collect database at their data center;
- Ensure timely cleansing of data in collect database by Data Managers;
- Ensure timely transfer of data at various levels;
- Monitor the progress of the Inventory field work and ensure strict compliance to the data collection methodology and quality standards;
- Ensure that the Inventory Crews observe safety guidelines during field work;
- Mobilize the fund (travel) for field work;
- Plan and execute the field work based on the proposed work calendar in this document;
- Collect from FRMD and distribute inventory equipment and field gears to the field crews;
- Ensure that the field equipment and other government properties issued are well maintained and taken care off;
- Ensure efficient use of equipment and resources provided for NFI;
- Coordinate and conduct consultation meetings with local government leaders and communities to garner their support for NFI field work; and
- Ensure delivery of above-ground understory and soil carbon sample to FRMD.

### **8.3.2 Data Manager**

The data manager shall:

- Allocate the NFI plots to NFI crews under his or her jurisdiction;
- Import the data into “Collect” database as and when received from the field crew;
- Verify the data collected from each plot are properly imported into Collect Database;

- Liaise with Crew Leader to ensure that the data collected is not lost;
- Store and maintain data backup for each data received from inventory crew in raw form as well as collect format;
- Cleanse the data received from inventory crews and submit a copy of raw and cleansed data to FRMD;
- Ensure timely data collection and upload into Collect;
- Check the data quality;
- Ensure complete collection and compilation of data;
- Remind crew leader to submit the data on a regular basis; and
- Deliver above-ground understory and soil carbon sample to the concerned CFO.

#### **8.3.4 Crew Leader**

The crew leader shall:

- Plan and execute field work under the guidance of CFO;
- Lead the field crew for execution of field work;
- Coordinate and complete the field work on time;
- Submit the data collected to data manager on a regular basis and maintain a copy of data submitted;
- Mobilize support from the community and local leaders as may be required for field work;
- Inform and update CFO of their whereabouts on a regular basis;
- Ensure safety and well-being of his/her crew members;
- Ensure that the field equipment and other government properties issued are well maintained and taken care off;



- Ensure efficient use of equipment and resources provided for NFI;
- Ensure the highest quality of data;
- Ensure proper division of responsibilities among crew members;
- Liaise with CFO in case of emergency situations during the field work;
- Ensure personal safety and safety of other crew members at all times; and
- Maintain discipline of the highest standard expected of a civil servant.

### **8.3.5 Crew Members**

The crew members shall:

- Be duty bound to obey the instructions of the crew leader;
- Cooperate and support the crew leader and other crew members;
- Maintain discipline of the highest standard expected of a civil servant;
- Dutifully carryout whatever work that s/he is assigned by crew leader;
- Ensure that the field equipment and other government properties issued are well maintained and taken care off;
- Work as a team; and
- Complete the work on time.

## **9. Distribution of NFI plots**

There are 2424 cluster plot to be enumerated. However, in the last NFI field work, the data was collected from 1685 cluster plots as 739 cluster plots could not be accessed due to seasonal, security and topographic conditions. The plot accessibility is expected to increase during the second round of the NFI, as Field Offices will have more familiarity and local knowledge to access the plots. Therefore, number of plots are divided based on the administrative jurisdiction of the DFO and PA Offices; and are provided in Table 2 and Table 3 respectively.

**Table 2: Number of plots allocated for each DFO**

Office	Plots Outside PA network	Plots falling in BC and RBP	Total
DFO, Bumthang	88	17	105
DFO, Dagana	97	0	97
DFO, Gedu	113	0	113
DFO, Mongar	118	27	145
DFO, Paro	86	14	100
DFO, Pemagatshel	53	4	57
DFO, Samdrup Jongkhar	35	9	44
DFO, Samtse	76	0	76
DFO, Sarpang	43	21	64
DFO, Thimphu	58	0	58
DFO, Trashigang	122	0	122
DFO, Tsirang	34	5	39
DFO, Wangdue	107	52	159
DFO, Zhemgang	64	27	91
<b>Total</b>	<b>1099</b>	<b>179</b>	<b>1270</b>

**Table 3: Number of plots allocated for each PA**

Office	No. of plots within the PA	Plots outside Park boundary	Total
Bumdeling Wildlife Sanctuary	99	0	99
Jigme Dorji National Park	279	1	280
Jigme Khesar Strick Nature Reserve	50	39	89
Jigme Singye Wangchuck National Park	108	0	108
Jomotshangkha Wildlife Sanctuary	22	53	75
Phrumsengla National Park	57	0	57
Phibsoo Wildlife Sanctuary	18	0	18
Royal Manas National Park	67	0	67
Sakteng Wildlife Sanctuary	45	8	53
Wangchuck Centennial National Park	308	0	308
<b>Total</b>	<b>1053</b>	<b>93</b>	<b>1154</b>

## 10. Approaches for Field Work

The field work for the NFI is planned to be completed in two financial years of 2021-2022 and 2022-2023. The field work will start immediately after completion of the training simultaneously by all Field Offices. Field Offices are encouraged to collaborate with each other to collect data from particular Dzongkhag in the same season or at least in the same year. For example, DFO, Bumthang may collaborate with Wangchuck Centennial National Park and Phrumsengla National Park for collection of data from Bumthang Dzongkhag, and, with Jigme Singye Wangchuck National Park for data collection in Trongsa Dzongkhag. The proposed collaborating partners for 20 Dzongkhags are described in Table 4.

**Table 4: Collaborating offices**

Sl. No.	Dzongkhag	Collaborating Field Offices
1	Bumthang	DFO, Bumthang, WCNP and PNP
2	Chukha	DFO, Gedu
3	Dagana	DFO, Dagana and PWS
4	Gasa	JDNP and WCNP
5	Haa	DFO, Paro and JKSNR
6	Lhuntse	DFO, Mongar, WCNP, PNP and BWS
7	Mongar	DFO, Mongar, PNP and BWS
8	Paro	DFO, Paro, JKSNR and JDNP
9	Pemagatshel	DFO, Pemagatshel and RMNP
10	Punakha	DFO, Wangdue and JDNP
11	Samdrup Jongkhar	DFO, Samdrup Jongkhar and JWS
12	Samtse	DFO, Samtse and JKSNR
13	Sarpang	DFO, Sarpang, JSWNP, RMNP and PWS
14	Thimphu	DFO, Thimphu and JDNP
15	Trashigang	DFO, Trashigang and SWS
16	Trashiyangtse	DFO, Trashigang and BWS
17	Trongsa	DFO, Bumthang, WCNP and JSWNP
18	Tsirang	DFO, Tsirang and PWS
19	Wangdue Phodrang	DFO, Wangdue, WCNP, JDNP and JSWNP
20	Zhemgang	DFO, Zhemgang, JSWNP, PNP and RMNP

## 11. Time Required for Data Collection

Based on the experience of conducting field work for the last NFI, the data collection from each plot will take about 2.5 (two and half) days on an average for a team. A team shall comprise of 5 foresters and 4 field assistants. It may be noted that the plots near motorable road will be completed within a day while the plots in far flung areas may take more than 2.5 days. The number of days required for collection of data from each plot is fixed at 2.5 days irrespective of the location and accessibility. The number of days that would be required for data collection by one team is described in Table 5.

**Table 5: Number of days and months required for data collection by one team**

Office	NFI Plots	Number of Days
DFO, Bumthang	105	263
DFO, Dagana	97	243
DFO, Gedu	113	283
DFO, Mongar	145	363
DFO, Paro	100	250
DFO, Pemagatshel	57	143
DFO, Samdrup Jongkhar	44	110
DFO, Samtse	76	190
DFO, Sarpang	64	160
DFO, Thimphu	58	145
DFO, Trashigang	122	305
DFO, Tsirang	39	98
DFO, Wangdue	159	398
DFO, Zhemgang	91	228
Bumdeling Wildlife Sanctuary	99	248
Jigme Dorji National Park	280	700
Jigme Khesar Strict Nature Reserve	89	223
Jigme Singye Wangchuck National Park	108	270
Jomotshangkha Wildlife Sanctuary	75	188
Phrumsengla National Park	57	143
Phibsoo Wildlife Sanctuary	18	45

Royal Manas National Park	67	168
Sakteng Wildlife Sanctuary	53	133
Wangchuck Centennial National Park	308	770

## 12. Team formation

Each of the Field Offices are required to constitute a team of five forest official for NFI data collection. They will be assisted by 4 laborers for locating plots as well as transportation of NFI equipment. The team shall be formed considering the position/grade of the team members, besides the technical and physical abilities of the crew. The team leader should be a Range Officer level or higher grade, while the rest could be foresters or Range Officer level staff. It is encouraged to have someone who is technically sound on botany/taxonomy, birding, etc. The team formation should also consider physical abilities of the crew.

Based on the number of days required for data collection and also budget implications for gears and equipment to be provided to the NFI crews, it is recommended that every office will have a crew each except Jigme Dorji National Park and Wangchuck Centennial National Park which will have 2 NFI crews each. Moreover, many of the Field Offices are currently understaffed and short of manpower, so asking the Field Offices to depute more staff on NFI duty will be challenging for the management and also hamper the progress of the Field Offices.

## 13. Human Resources Requirement

The human resources requirement for each Field Office is worked out in Table 6. The number of field guides and assistants required is fixed at 4. The laborers will be entitled for daily wage as per existing rules and regulations of the Government. The local field guide, laborers, caretakers and cooks will be hired from the locality to minimize cost incurred for hiring them. The Field Offices and crews are discouraged from engaging the laborers on permanent basis. The Field Offices shall arrange to provide security to NFI crews where necessary, especially to collect data from the plots located in the southern borders where it is risky and not safe to deploy crews themselves. Therefore, on provision of security to the field crews, the FRMD will rely on the wisdom and judgement of field crews and CFO of the concerned Field Offices.

**Table 6: Human resources required for field work**

Office	No. of Plots	No. of Teams	Regular Human Resources (Forest Personnel)			Hired Human Resources					Remarks	
			Crew Leader	Crew Member	Total	Cook	Caretaker	Labour	Guide	Total		
DFO, Bumthang	105	1	1	4	5	1	1	1	1	1	4	As required
DFO, Dagana	97	1	1	4	5	1		1	1	1	4	As required
DFO, Gedu	113	1	1	4	5	1	1	1	1	1	4	As required
DFO, Mongar	145	1	1	4	5	1	1	1	1	1	4	As required
DFO, Paro	100	1	1	4	5	1	1	1	1	1	4	As required
DFO, Pemagatshel	57	1	1	4	5	1	1	1	1	1	4	As required
DFO, Samdrup Jongkhar	44	1	1	4	5	1	1	1	1	1	4	As required
DFO, Samtse	76	1	1	4	5	1	1	1	1	1	4	As required
DFO, Sarpang	64	1	1	4	5	1	1	1	1	1	4	As required
DFO, Thimphu	58	1	1	4	5	1	1	1	1	1	4	As required
DFO, Trashigang	122	1	1	4	5	1	1	1	1	1	4	As required
DFO, Tsirang	39	1	1	4	5	1	1	1	1	1	4	As required
DFO, Wangdue	159	1	1	4	5	1	1	1	1	1	4	As required
DFO, Zhemgang	91	1	1	4	5	1	1	1	1	1	4	As required
Bumdeling Wildlife Sanctuary	99	1	1	4	5	1	1	1	1	1	4	As required

Jigme Dorji National Park	280	2	2	8	10	2	2	2	2	2	2	8	As required
Jigme Khesar Strict Nature Reserve	89	1	1	4	5	1	1	1	1	1	1	4	As required
Jigme Singye Wangchuck National Park	108	1	1	4	5	1	1	1	1	1	1	4	As required
Jomotsangkha Wildlife Sanctuary	75	1	1	4	5	1	1	1	1	1	1	4	As required
Phrumsengla National Park	57	1	1	4	5	1	1	1	1	1	1	4	As required
Phibsoo Wildlife Sanctuary	18	1	1	4	5	1	1	1	1	1	1	4	As required
Royal Manas National Park	67	1	1	4	5	1	1	1	1	1	1	4	As required
Sakteng Wildlife Sanctuary	53	1	1	4	5	1	1	1	1	1	1	4	As required
Wangchuck Centennial National Park	308	2	2	8	10	2	2	2	2	2	2	8	As required

## 14. Data Collection

The data will be collected using **collect mobile application** installed in the android tablet. The parameters to be collected and protocol are defined in the NFI field manual and re-measurement protocols.

## 15. Data Management

There will be two stage data management systems for NFI. The first stage of data management shall be handled by data managers nominated at each Field Office and the next stage of data for the entire country will be managed at FRMD. The data managers at both Field Office and FRMD shall NOT share data in part or entirely with any individuals and/or parties or institutes before publishing the national level reports. The details of data management protocol are defined in the data management protocol.

## 16. Budgetary Requirement

The budget will be required in two phases. Huge budget will be required in the preparatory phase for:

- Setting up NFI infrastructure in the Field Offices (procurement of equipment, field gears, etc.);
- Data management system for NFI in Field Offices;
- Procurement of forest inventory field equipment; and
- Capacity building of data managers and NFI crews.

FRMD will carry out the training in different regions for data managers and NFI crews. A separate training will be provided for the data managers for data cleaning process, management and submission to FRMD as may be required. Re-training of the Inventory Crews will be conducted as and when required.

Another budget requirement will be in the form of payment of daily and travel allowances for the inventory crews and wages to hired human resources. Hiring vehicle for the transportation of the inventory crews will incur additional cost.



## 16.1 Estimated Cost for Field Work

The budget estimates for the field work is based on the average number of days it is estimated to take to complete the field enumeration. Based on the experience and expenditure incurred during the first NFI, it is estimated to cost Nu.40,000 per plot to collect the data. The estimated cost of Nu. 40,000 per plot includes TADA, potter pony, vehicle hiring charges and labour charges but not the staff salary. Therefore, total approximate estimated cost amounts to Nu. 96.96 million for collecting data from 2424 NFI plots. This is an indicative cost based on experience and expenditure incurred during the first NFI. However, it is anticipated to change considering the revision of pay and allowances by the 4<sup>th</sup> Pay Commission of the new government. Table 7 describes the allocation of NFI plots for enumeration spread over two years and this may be used as a guide for work planning and budget preparation. Each Field Offices are assigned number of plots to be enumerated (year wise) and the enumeration year is harmonized, as far as possible, where plots in a particular Dzongkhag is managed by multiple offices. For example, the enumeration of Trongsa Dzongkhag will be carried out in year 1 by Bumthang Division, Jigme Singye Wangchuk National Park and Wangchuck Centennial National Park.

*Table 7: Guide for field work planning and budget estimate*

Office	Dzongkhag	BC	RBP	NPs_WS	FDs	Total	Re- marks	Plot Allocation		Year 1			Year 2		
								Yr 1	Yr 2	PAs	Out- side PAs	Total	PAs	Out- side PAs	Total
DFO, Bumthang	Trongsa	17			36	53	BC4 and BC6	53	0	17	36	53	0	0	0
	Bumthang				52	52		0	52	0	0	0	0	0	52
DFO, Dagana	Dagana				97	97		50	47	0	50	50	0	47	47
DFO, Gedu	Chhukha				113	113		60	53	0	60	60	0	53	53
DFO, Mongar	Lhuntse	25			28	53	BC6	53	0	25	28	53	0	0	0
	Mongar	2			90	92	BC7	30	62	2	28	30	0	62	62
DFO, Paro	Haa	6			30	36	BC1	36	0	6	30	36			0
	Paro	8			56	64	BC1	0	64	0	0	0	8	56	64
DFO, Pemagat- shel	Pemagatshel	4			53	57	BC 5	30	27	4	26	30		27	27
DFO, Samdrup Jongkhar	Samdrup Jongkhar	9			35	44	BC5	22	22	5	17	22	4	18	22
DFO, Samtse	Samtse				76	76		40	36		40	40		36	36
DFO, Sarpang	Sarpang	21			43	64	BC3	29	35	11	18	29	10	25	35
DFO, Thimphu	Thimphu				58	58		30	28		30	30		28	28

DFO, Trashigang	Trashigang	0		84	84		62	22		62	62		22	22
	Trashiyangtse			38	38		0	38	0	0	0	0	38	38
DFO, Tsirang	Tsirang	5		34	39	BC3	39	0	5	34	39	0	0	0
	Punakha		6	30	36	RBP	36	0	6	30	36	0	0	0
DFO, Wangdue	Wangdue	46		77	123	BC2 and BC8	40	83	18	22	40	28	55	83
	Zhemgang	27		64	91	BC4	50	41	15	35	50	12	29	41
Bumdeling WS	Lhuntse		34		34		34	0	34	0	34	0	0	0
	Mongar		13		13		13	0	13	0	13	0	0	0
	Trashiyangtse		52		52		0	52	0	0	0	52	0	52
	Paro		17		17		17	0	17	0	17	0	0	0
Jigme Dorji National Park	Punakha		34		34		34	0	34	0	34	0	0	0
	Thimphu		55	1	56		56	0	55	1	56	0	0	0
Jigme Khesar Strict Nature Reserve	Gasa		173		173		33	140	33	0	33	140	0	140
	Haa		46	39	85		50	35	26	24	50	20	15	35
Jigme Singye Wangchuck National Park	Samtse		4		4		0	4	0	0	0	4	0	4
	Sarpang		15		15		15	0	15	0	15	0	0	0
	Trongsa		44		44		44	0	44	0	44	0	0	0
	Tsirang		3		3		3	0	3	0	3	0	0	0
	Wangdue		39		39		0	39	0	0	0	39	0	39
	Zhemgang		7		7		0	7	0	0	0	7	0	7

Jomotsangkha Wildlife Sanctuary	Samdrup Jongkhar		22	53	75		50	25	15	35	50	7	18	25
Phiboo Wild Sanctuary	Dagana		10		10		10	0	10	0	10	0	0	0
	Sarpang		8		8		8	0	8	0	8	0	0	0
Phrumsengla National Park	Lhuntse		16		16		16	0	16	0	16	0	0	0
	Mongar		15		15		15	0	15	0	15	0	0	0
	Zhemgang		8		8		0	8	0		0	8		8
	Bumthang		18		18		0	18	0	0	0	18	0	18
Royal Manas National Park	Pemagatshel		6		6		6	0	6		6	0	0	0
	Sarpang		17		17		17	0	17		17	0	0	0
	Zhemgang		44		44		7	37	7		7	37	0	37
Sakteng Wildlife Sanctuary	Tirashigang	3	45	5	53		53	0	448	5	53	0	0	0
	Lhuntse		78		78		78	0	78	0	78	0	0	0
Wangchuk Centennial National Park	Trongsa		16		16		16	0	16	0	16	0	0	0
	Wangdue		89		89		60	29	60	0	60	29	0	29
	Bumthang		97		97		0	97	0	0	0	97	0	97
	Gasa		28		28		0	28	0	0	0	28	0	28
		173	6	1053	1192	2424	1295	1129	684	611	1295	548	581	1129

Note: BC – Biological Corridors, NPs – National Park, WSs – Wildlife Sanctuary, RBP – Royal Botanical Park, and FD – Divisional Forest Offices

PA – Protected Area

## 16.2 Quality Assurance and Quality Control (QAQC)

An independent team will be constituted for carrying out hot checks and cold checks for about 5 % of NFI plots during the fieldwork to ensure that the data collected by NFI field crews are of the highest quality and standard. The QAQC team will be formed by and at FRMD. The number of QAQC team to be formed will be decided by FRMD depending on requirement. The estimated cost of the QAQC is Nu. 4.848 million.

## 17. Field Gears and Equipment

In order to ensure successful implementation of NFI, the field crews will have to be equipped with necessary field gears and equipment. The essential field gears and equipment are listed in Table 8 and 9 respectively.

**Table 8: List of field gears**

SN	Items	Purpose
1	Four men Dome tent	Pooled item
2	Tarpualin	Pooled item
3	Solar lantern	Pooled item
4	Sleeping bag	Individual item
5	Sleeping mattress/pads	Individual item
6	Trekking boot	Individual item
7	Rucksack	Individual item
8	Back pack	Individual item
9	Rain jacket (Printed with NFI)	Individual item
10	Water bottle	Individual item
11	Head lamp	Individual item
12	Sun cap (printed with NFI)	Individual item
13	Knife/Patang	Individual item
14	Survival kit	Individual item

**Table 9: List of Equipment**

SN	Items	Purpose
1	Laptop	For collecting and storing data
2	External hard drive	For storing back up data
3	USB drive	For storing and transferring back up data
4	Android tablet	For data logging
5	Global positioning system	For navigating to plots and collecting geo-coordinate positions
6	Measuring tape	For measuring distance
7	Diameter tape	For measuring diameter
8	Clinometer	For measuring slope and height (sometimes)
9	Compass	For finding out direction
10	Hypsometer	For measuring height of trees and distance
11	Crown densitometer	For measuring canopy cover percent
12	Increment borer	For obtaining tree cores
13	Bark gauge	For measuring bark thickness
14	Aluminium nails	For marking trees with aluminium tags
15	Aluminium tags	For marking trees in the plots
16	Measuring scale	For measuring the weight of soil, shrub, herb samples
17	Ruler (Steel)	For measuring depth of litter
18	Soil sampling frame	For collecting soil samples
19	Pruning shears	For cutting smaller branches and roots
20	Polythene bags	For storing soil samples
21	Muslin bags	For storing shrubs, herbs and litter samples
22	Calipers	For measuring diameter of smaller branches and twigs
23	Flagging tags	For marking boundary of plots
24	Hammer	For driving in the nails and soil frame
25	Ropes	For tying up samples for weighing
26	Tarpaulin with grommet	For collecting and weighing shrubs and herbs samples
27	Metal detector	For relocating plot centers
28	Labeling stickers	For labelling samples
29	Labeling pens	For labeling samples
30	Ziploc bags	For storing the samples

## 18. Financial Management

Unlike the last NFI, the financial management for this round of NFI will be the joint responsibility of FRMD and Field Offices. As indicated above, the financial resources required for preparatory phase will be mobilized and managed by FRMD. However, for the enumeration phase, the FRMD will assist the Field Offices to mobilize fund and utilize the same for collecting data from the NFI plots.

## 19. Communication Channel

The Head of Forest Resources Inventory Section (FRIS) of FRMD will be the National Coordinator of NFI, who will coordinate and ensure successful implementation of NFI under the guidance of CFO, FRMD. The CFO of the Field Offices will be principal coordinator at respective Field Offices who will be entrusted with the responsibility to ensure the successful implementation of NFI in their respective jurisdiction. Any correspondence required to be made to field crews by FRMD will be routed through principal coordinators and vice versa.

The respective Field Offices, will constitute required NFI crews to implement NFI within their jurisdiction. Therefore, any communication that the field crew members have to make to the principal coordinators will be made through their respective NFI crew leaders, and vice-versa.

## Office Wise National Forest Inventory Plot list

### 1. Bumthang Forest Division

CP.No.	Gewog	Remarks	CP.No.	Gewog	Remarks	CP.No.	Gewog	Remarks
<b>Bumthang Dzongkhag</b>								
CP0656	Chokhor		CP0907	Chumey		CP0785	Tang	
CP0716	Chokhor		CP0908	Chumey		CP0786	Tang	
CP0717	Chokhor		CP0971	Chumey		CP0787	Tang	
CP0778	Chokhor		CP0972	Chumey		CP0788	Tang	
CP0779	Chokhor		CP0973	Chumey		CP0846	Tang	
CP0780	Chokhor		CP0974	Chumey		CP0847	Tang	
CP0781	Chokhor		CP0975	Chumey		CP0848	Tang	
CP0782	Chokhor		CP1040	Chumey		CP0910	Tang	
CP0783	Chokhor		CP1041	Chumey		CP0911	Tang	
CP0843	Chokhor		CP1042	Chumey		CP0912	Ura	
CP0844	Chokhor		CP1043	Chumey		CP0977	Ura	
CP0845	Chokhor		CP1118	Chumey		CP0978	Ura	
CP0909	Chokhor		CP0665	Tang		CP0979	Ura	
CP0976	Chokhor		CP0666	Tang		CP0980	Ura	
CP0841	Chumey		CP0725	Tang		CP1045	Ura	



CP0842	Chumey	CP0726	Tang		CP1046	Ura
CP0905	Chumey	CP0784	Tang		CP1122	Ura
CP0906	Chumey					
<b>Trongsa Dzongkhag</b>						
CP1036	Drakten	CP1268	Langthil	BC4	CP0838	Nubee
CP1037	Drakten	CP1269	Langthil	BC4	CP0839	Nubee
CP1038	Drakten	CP1344	Langthil	BC4	CP0840	Nubee
CP1112	Drakten	CP1345	Langthil	BC4	CP0900	Nubee
CP1113	Drakten	CP1346	Langthil	BC4	CP0901	Nubee
CP1189	Drakten	CP1347	Langthil	BC4	CP0902	Nubee
CP1039	Langthil	CP1424	Langthil		CP0903	Nubee
CP1114	Langthil	CP1425	Langthil	BC4	CP0904	Nubee
CP1115	Langthil	CP1426	Langthil	BC4	CP0966	Nubee
CP1116	Langthil	CP1427	Langthil	BC4	CP0967	Nubee
CP1117	Langthil	CP1505	Langthil	BC4	CP0969	Nubee
CP1190	Langthil	CP0774	Nubee	BC8	CP0970	Nubee
CP1191	Langthil	CP0775	Nubee		CP0964	Tangsibjee
CP1192	Langthil	CP0776	Nubee		CP0965	Tangsibjee
CP1193	Langthil	CP0777	Nubee		CP0968	Tangsibjee

CP1194	Langthil	BC4	CP0835	Nubee	BC8	CP1034	Tangsibjee
CP1266	Langthil		CP0836	Nubee	BC8	CP1035	Tangsibjee
CP1267	Langthil		CP0837	Nubee	BC8		

## 2. Dagana Forest Division

CP.No.	Gewog	Remarks	CP.No.	Gewog	Remarks	CP.No.	Gewog	Remarks
<b>Dagana Dzongkhag</b>								
CP2379	Karmaling		CP2045	Khebisa		CP1563	Tseza	
CP2380	Karmaling		CP2046	Khebisa		CP1564	Tseza	
CP2381	Karmaling		CP1730	Lajab		CP1565	Tseza	
CP2409	Karmaling		CP1731	Lajab		CP1566	Tseza	
CP2410	Karmaling		CP1732	Lajab		CP1567	Tseza	
CP2196	Dorona		CP1809	Lajab		CP1643	Tseza	
CP2268	Dorona		CP1810	Lajab		CP1644	Tseza	
CP2269	Dorona		CP1887	Lajab		CP1645	Tseza	
CP2331	Dorona		CP2378	Lhamoizingkha		CP1646	Tseza	
CP2332	Dorona		CP2406	Lhamoizingkha		CP1647	Tseza	
CP2333	Dorona		CP2407	Lhamoizingkha		CP1648	Tseza	
CP1966	Drujeygang		CP2408	Lhamoizingkha		CP1649	Tseza	
CP2047	Drujeygang		CP2419	Lhamoizingkha		CP1723	Tseza	

CP2125	Drujeygang		CP2420	Lhamoizingkha		CP1724	Tseza
CP2121	Gesarling		CP2124	Trashiding		CP1725	Tseza
CP2197	Gesarling		CP2200	Trashiding		CP1726	Tseza
CP2198	Gesarling		CP2123	Tsandagang		CP1727	Tseza
CP2122	Goshi		CP2199	Tsandagang		CP1728	Tseza
CP1884	Karna		CP2270	Tsandagang		CP1729	Tseza
CP1961	Karna		CP2271	Tsandagang		CP1801	Tseza
CP1962	Karna		CP2272	Tsandagang		CP1802	Tseza
CP1963	Karna		CP2273	Tsandagang		CP1803	Tseza
CP1964	Karna		CP2334	Tsandagang		CP1804	Tseza
CP2041	Karna		CP2335	Tsandagang		CP1805	Tseza
CP2042	Karna		CP1403	Tseza		CP1806	Tseza
CP2043	Karna		CP1405	Tseza		CP1807	Tseza
CP2044	Karna		CP1482	Tseza		CP1880	Tseza
CP2119	Karna		CP1483	Tseza		CP1881	Tseza
CP2120	Karna		CP1484	Tseza		CP1882	Tseza
CP1808	Khebisa		CP1485	Tseza		CP1883	Tseza
CP1885	Khebisa		CP1486	Tseza		CP1888	Tshangkha
CP1886	Khebisa		CP1562	Tseza		CP1967	Tshangkha
CP1965	Khebisa						

### 3. Gedu Forest Division

CP.No.	Gewog	Remarks	CP.No.	Gewog	Remarks	CP.No.	Gewog	Remarks
<b>Chukha Dzongkhag</b>								
CP1318	Bjachho		CP1720	Chapcha		CP1958	Getana	
CP1398	Bjachho		CP2262	Darla		CP1959	Getana	
CP1478	Bjachho		CP2325	Darla		CP1960	Getana	
CP1479	Bjachho		CP2373	Darla		CP2038	Getana	
CP1721	Bjachho		CP2374	Darla		CP2039	Getana	
CP1722	Bjachho		CP2375	Darla		CP2040	Getana	
CP1798	Bjachho		CP2404	Darla		CP2193	Getana	
CP1799	Bjachho		CP2405	Darla		CP2194	Getana	
CP1800	Bjachho		CP2417	Darla		CP2195	Getana	
CP1876	Bjachho		CP2418	Darla		CP2266	Getana	
CP1877	Bjachho		CP1554	Dungna		CP2267	Getana	
CP1955	Bjachho		CP1555	Dungna		CP2330	Getana	
CP1878	Bongo		CP1556	Dungna		CP2030	Logchina	
CP1879	Bongo		CP1636	Dungna		CP2031	Logchina	
CP1956	Bongo		CP1637	Dungna		CP2108	Logchina	
CP1957	Bongo		CP1715	Dungna		CP2109	Logchina	
CP2035	Bongo		CP1793	Dungna		CP1638	Metakha	

CP2036	Bongo		CP1871	Dungna		CP1716	Metakha	
CP2037	Bongo		CP1872	Dungna		CP1717	Metakha	
CP2113	Bongo		CP1950	Dungna		CP1718	Metakha	
CP2114	Bongo		CP1951	Dungna		CP1794	Metakha	
CP2115	Bongo		CP2029	Dungna		CP1795	Metakha	
CP2116	Bongo		CP2112	Dungna		CP1796	Metakha	
CP2189	Bongo		CP2117	Dungna		CP1873	Metakha	
CP2190	Bongo		CP2118	Dungna		CP1874	Metakha	
CP2191	Bongo		CP1639	Geling		CP2032	Phuntsholing	
CP2192	Bongo		CP1719	Geling		CP2107	Phuntsholing	
CP2263	Bongo		CP1797	Geling		CP2110	Phuntsholing	
CP2264	Bongo		CP1875	Geling		CP2111	Phuntsholing	
CP2265	Bongo		CP1952	Geling		CP2184	Phuntsholing	
CP2326	Bongo		CP1953	Geling		CP2185	Phuntsholing	
CP2327	Bongo		CP1954	Geling		CP2186	Phuntsholing	
CP2328	Bongo		CP2033	Geling		CP2258	Phuntsholing	
CP2329	Bongo		CP2034	Geling		CP2259	Sampheling	
CP2376	Bongo		CP2187	Geling		CP2323	Sampheling	
CP2377	Bongo		CP2188	Geling		CP2324	Sampheling	
CP1559	Chapcha		CP2260	Geling		CP2372	Sampheling	
CP1640	Chapcha		CP2261	Geling				

#### 4. Mongar Forest Division

CP.No.	Gewog	Remarks	CP.No.	Gewog	Remarks	CP.No.	Gewog	Remarks
<b>Lhuntse Dzongkhag</b>								
CP0489	Gangzur		CP1053	Jaray		CP0857	Menji	BC7
CP0490	Gangzur	BC7	CP0433	Khoma	BC7	CP0791	Metsho	BC7
CP0548	Gangzur	BC7	CP0491	Khoma	BC7	CP0853	Metsho	
CP0549	Gangzur		CP0492	Khoma	BC7	CP0854	Metsho	
CP0550	Gangzur	BC7	CP0551	Khoma	BC7	CP0917	Metsho	
CP0606	Gangzur	BC7	CP0552	Khoma	BC7	CP0918	Metsho	
CP0607	Gangzur	BC7	CP0611	Khoma		CP0919	Metsho	
CP0608	Gangzur	BC7	CP0612	Khoma	BC7	CP0983	Metsho	
CP0609	Gangzur		CP0672	Khoma	BC7	CP0984	Metsho	
CP0610	Gangzur	BC7	CP0673	Khoma		CP0920	Tshenkhar	
CP0670	Gangzur	BC7	CP0732	Menbi		CP0921	Tshenkhar	
CP0671	Gangzur		CP0792	Menbi	BC7	CP0986	Tshenkhar	
CP0730	Gangzur	BC7	CP0793	Menbi		CP0987	Tshenkhar	
CP0731	Gangzur	BC7	CP0794	Menbi		CP0988	Tshenkhar	BC7
CP0985	Jaray		CP0855	Menbi	BC7	CPI054	Tshenkhar	
CP1050	Jaray		CP0733	Menji	BC7	CP1055	Tshenkhar	BC7
CP1051	Jaray		CP0795	Menji		CP1130	Tshenkhar	BC7

CP1052	Jaray	CP0856	Menji			
<b>Mongar Dzongkhag</b>						
CP1285	Balam	CP1842	Kengkhar		CP1133	Sherimung
CP1286	Balam	CP1439	Mongar		CP1134	Sherimung
CP1359	Chali	CP1440	Mongar		CP1135	Sherimung
CP1360	Chali	CP1441	Mongar		CP1209	Sherimung
CP1442	Chaskhar	CP1519	Mongar		CP1210	Sherimung
CP1443	Chaskhar	CP1364	Narang		CP1211	Sherimung
CP1523	Chaskhar	CP1365	Narang		CP1677	Silambi
CP1520	Depong	CP1444	Narang		CP1678	Silambi
CP1521	Depong	CP1283	Ngatshang		CP1756	Silambi
CP1601	Depong	CP1284	Ngatshang		CP1757	Silambi
CP1287	Drametse	CP1361	Ngatshang		CP1758	Silambi
CP1760	Gungdue	CP1362	Ngatshang		CP1759	Silambi
CP1837	Gungdue	CP1363	Ngatshang		CP1835	Silambi
CP1838	Gungdue	CP1357	Saling		CP1836	Silambi
CP1839	Gungdue	CP1434	Saling		CP1914	Silambi
CP1915	Gungdue	CP1436	Saling		CP1522	Thangrong
CP1916	Gungdue	CP1437	Saling		CP1602	Thangrong
CP1917	Gungdue	CP1438	Saling		CP1603	Thangrong

CP1994	Gungdue		CP1515	Saling		CP1604	Thangrong	
CP1995	Gungdue		CP1516	Saling		CP1131	Tsakaling	
CP1996	Gungdue		CP1517	Saling		CP1132	Tsakaling	
CP2074	Gungdue		CP1518	Saling		CP1206	Tsakaling	
CP2075	Gungdue		CP1596	Saling		CP1207	Tsakaling	
CP1762	Jurmey		CP1597	Saling		CP1208	Tsakaling	
CP1840	Jurmey		CP1598	Saling		CP1281	Tsakaling	
CP1682	Kengkhar		CP1599	Saling		CP1282	Tsakaling	
CP1683	Kengkhar		CP1600	Saling		CP1128	Tsamang	BC7
CP1684	Kengkhar		CP1679	Saling		CP1129	Tsamang	BC7
CP1763	Kengkhar		CP1680	Saling		CP1205	Tsamang	
CP1764	Kengkhar		CP1681	Saling		CP1358	Tsamang	
CP1841	Kengkhar		CP1761	Saling				



## 5. Paro Forest Division

CP.No.	Gewog	Remarks	CP.No.	Gewog	Remarks	CP.No.	Gewog	Remarks
<b>Haa Dzongkhag</b>								
CP0741	Bji		CP1006	Bji		CP1231	Samar	
CP0742	Bji		CP1080	Bji		CP1232	Samar	
CP0743	Bji		CP1081	Bji		CP1309	Samar	
CP0804	Bji		CP1082	Bji		CP1310	Samar	
CP0805	Bji		CP1156	Bji		CP1311	Samar	
CP0806	Bji		CP1157	Bji		CP1312	Samar	
CP0807	Bji	BC1	CP1233	Eusu		CP1313	Samar	
CP0871	Bji	BC1	CP1234	Eusu		CP1390	Samar	
CP0936	Bji	BC1	CP1235	Eusu		CP1391	Samar	
CP0937	Bji	BC1	CP1083	Katsho		CP1392	Samar	
CP1004	Bji	BC1	CP1158	Katsho		CP1471	Samar	
CP1005	Bji	BC1	CP1159	Katsho		CP1472	Samar	
<b>Paro Dzongkhag</b>								
CP1239	Dogar		CP1160	Lungnyi		CP0563	Tsento	BC1
CP1316	Dogar		CP1161	Lungnyi		CP0622	Tsento	
CP1317	Dogar		CP1162	Lungnyi		CP0623	Tsento	
CP1396	Dogar		CP1236	Lungnyi		CP0681	Tsento	

CP1397	Dogar	CP1237	Lungnyi	CP0682	Tsento	
CP1477	Dogar	CP1314	Naja	CP0683	Tsento	BCI
CP1010	Dopshari	CP1393	Naja	CP0744	Tsento	
CP1011	Dopshari	CP1394	Naja	CP0745	Tsento	BCI
CP0750	Doteng	CP1395	Naja	CP0746	Tsento	BCI
CP0811	Doteng	CP1473	Naja	CP0808	Tsento	BCI
CP0812	Doteng	CP1474	Naja	CP0809	Tsento	
CP0875	Doteng	CP1475	Naja	CP0810	Tsento	
CP0876	Doteng	CP1476	Naja	CP0872	Tsento	BCI
CP0877	Doteng	CP1557	Naja	CP0873	Tsento	BCI
CP0941	Doteng	CP1558	Naja	CP0874	Tsento	
CP0942	Doteng	CP1163	Shaba	CP0938	Tsento	BCI
CP0943	Doteng	CP1238	Shaba	CP0939	Tsento	
CP1087	Hungrel	CP1315	Shaba	CP0940	Tsento	
CP1008	Lamgong	CP0442	Tsento	CP1007	Tsento	
CP1009	Lamgong	CP0502	Tsento	CP1164	Tsento	
CP1084	Lamgong	CP0562	Tsento	CP1086	Wangchang	
CP1085	Lungnyi					

## 6. Pemagatshel Forest Division

CP.No.	Gewog	Remarks	CP.No.	Gewog	Remarks	CP.No.	Gewog	Remarks
<b>Pemagatshel Dzongkhag</b>								
CP1918	Chimung		CP2231	Dechheling		CP1767	Nanong	
CP1919	Chimung		CP2232	Dechheling		CP1846	Nanong	
CP1998	Chimung		CP2299	Dechheling		CP1925	Nanong	
CP2233	Choekhorling		CP2301	Dechheling		CP2297	Norbugang	
CP2303	Choekhorling		CP2302	Dechheling		CP2300	Norbugang	
CP2304	Choekhorling		CP1997	Dungmin		CP2360	Norbugang	
CP2361	Choekhorling		CP2076	Dungmin		CP1685	Shumar	
CP2362	Choekhorling		CP2077	Dungmin		CP1686	Shumar	
CP2363	Choekhorling	BC5	CP2078	Dungmin		CP1765	Shumar	
CP2400	Choekhorling	BC5	CP2079	Dungmin		CP1766	Shumar	
CP2401	Choekhorling	BC5	CP2157	Dungmin		CP1843	Shumar	
CP2402	Choekhorling	BC5	CP2001	Khar		CP1922	Shumar	
CP1999	Chongshing		CP2080	Khar		CP2002	Shumar	
CP2000	Chongshing		CP2081	Khar		CP1920	Yurung	
CP2154	Dechheling		CP2158	Khar		CP1921	Yurung	
CP2155	Dechheling		CP2159	Khar		CP1844	Zobel	
CP2156	Dechheling		CP2234	Khar		CP1845	Zobel	

CP2229	Dechheling	CP2235	Khar	CP1923	Zobel
CP2230	Dechheling	CP1687	Nanong	CP1924	Zobel

### 7. Samdrup Jongkhar Forest Division

CP.No.	Gewog	Remarks	CP.No.	Gewog	Remarks	CP.No.	Gewog	Remarks
<b>Samdrup Jongkhar Dzongkhag</b>								
CP2239	Deothang		CP2006	Gomdar		CP2244	Pemathang	
CP2240	Deothang		CP2084	Gomdar		CP2242	Phuntshothang	
CP2306	Deothang		CP2085	Gomdar		CP2243	Phuntshothang	
CP2307	Deothang		CP2003	Orong		CP2311	Phuntshothang	
CP2308	Deothang		CP2082	Orong		CP2312	Phuntshothang	
CP2309	Deothang		CP2083	Orong		CP2313	Phuntshothang	
CP2310	Deothang		CP2160	Orong		CP2368	Phuntshothang	
CP2364	Deothang		CP2161	Orong		CP2369	Phuntshothang	
CP2365	Deothang		CP2162	Orong		CP2370	Phuntshothang	
CP2366	Deothang		CP2163	Orong		CP2169	Samrang	
CP2367	Deothang		CP2236	Orong		CP2007	Wangphu	
CP2403	Deothang		CP2237	Orong		CP2086	Wangphu	
CP1927	Gomdar		CP2238	Orong		CP2087	Wangphu	
CP2004	Gomdar		CP2305	Orong		CP2164	Wangphu	
CP2005	Gomdar		CP2168	Pemathang				

## 8. Samtse Forest Division

CP.No.	Gewog	Remarks	CP.No.	Gewog	Remarks	CP.No.	Gewog	Remarks
<b>Samtse Dzongkhag</b>								
CP1869	Denchukha		CP1944	Norbugang		CP2178	Samtse	
CP1870	Denchukha		CP2022	Norbugang		CP2179	Samtse	
CP1947	Denchukha		CP2023	Norbugang		CP2180	Samtse	
CP1948	Denchukha		CP2100	Norbugang		CP2251	Samtse	
CP1949	Denchukha		CP2101	Norbugang		CP2252	Samtse	
CP2028	Denchukha		CP1460	Norgaygang		CP1941	Sangacholing	
CP2025	Dophuchen		CP1461	Norgaygang		CP2020	Sangacholing	
CP2026	Dophuchen		CP1541	Norgaygang		CP2181	Tading	
CP2027	Dophuchen		CP1542	Norgaygang		CP2182	Tading	
CP2104	Dophuchen		CP1621	Norgaygang		CP2183	Tading	
CP2105	Dophuchen		CP1622	Norgaygang		CP2255	Tading	
CP2106	Dophuchen		CP1702	Norgaygang		CP2256	Tading	
CP1866	Dumtse		CP1782	Pemaling		CP2257	Tading	
CP1945	Dumtse		CP1860	Pemaling		CP2322	Tading	
CP1946	Dumtse		CP1939	Pemaling		CP2019	Tashicholing	
CP1706	Namgyelcholing		CP2253	Phuntshopetri		CP1543	Tendu	
CP1783	Namgyelcholing		CP2254	Phuntshopetri		CP1544	Tendu	

CP1784	Namgyelcholing	CP2318	Phuntshopelri	CP1623	Tendu
CP1785	Namgyelcholing	CP2319	Phuntshopelri	CP1624	Tendu
CP1861	Namgyelcholing	CP2320	Phuntshopelri	CP1625	Tendu
CP1862	Namgyelcholing	CP2321	Phuntshopelri	CP1703	Tendu
CP1863	Namgyelcholing	CP2024	Samtse	CP1704	Tendu
CP1940	Namgyelcholing	CP2102	Samtse	CP1705	Tendu
CP1864	Norbugang	CP2103	Samtse	CP2099	Ugyentse
CP1942	Norbugang	CP2177	Samtse	CP2021	Yoesheltsse
CP1943	Norbugang				

### 9. Sarpang Forest Division

CP.No.	Gewog	Remarks	CP.No.	Gewog	Remarks	CP.No.	Gewog	Remarks
<b>Sarpang Dzongkhag</b>								
CP2134	Bhur		CP1974	Dovan	BC3	CP1979	Jigmechoeling	
CP2135	Bhur		CP1975	Dovan	BC3	CP1980	Jigmechoeling	
CP2211	Bhur		CP1976	Dovan		CP1981	Jigmechoeling	
CP2213	Chuzagang		CP2057	Dovan	BC3	CP2058	Jigmechoeling	BC3
CP2283	Chuzagang		CP2136	Gelephu		CP2059	Jigmechoeling	BC3
CP2055	Dekiling	BC3	CP2212	Gelephu		CP2060	Jigmechoeling	BC3
CP2056	Dekiling	BC3	CP2282	Gelephu		CP2137	Sershong	

CP2132	Dekiling		CP2052	Hilley	BC3	CP2138	Sershong	BC3
CP2133	Dekiling		CP2053	Hilley	BC3	CP2214	Sershong	
CP2208	Dekiling		CP2054	Hilley	BC3	CP2215	Sershong	BC3
CP2209	Dekiling		CP2130	Hilley	BC3	CP2284	Sershong	
CP2210	Dekiling		CP2131	Hilley		CP2280	Shompangkha	
CP2281	Dekiling		CP2206	Hilley		CP2205	Singhi	BC3
CP1739	Dovan		CP2207	Hilley		CP2277	Singhi	BC3
CP1816	Dovan		CP2279	Hilley		CP2278	Singhi	
CP1817	Dovan		CP1897	Jigmechoeling		CP2340	Singhi	BC3
CP1818	Dovan		CP1898	Jigmechoeling		CP2341	Singhi	
CP1819	Dovan		CP1899	Jigmechoeling		CP2285	Umling	
CP1894	Dovan		CP1900	Jigmechoeling	BC3	CP2342	Umling	
CP1895	Dovan		CP1977	Jigmechoeling	BC3	CP2343	Umling	
CP1896	Dovan		CP1978	Jigmechoeling	BC3	CP2344	Umling	
CP1973	Dovan	BC3						

### 10. Thimphu Forest Division

CP.No.	Gewog	Remarks	CP.No.	Gewog	Remarks	CP.No.	Gewog	Remarks
<b>Thimphu Dzongkhag</b>								
CP0949	Chang		CP1560	Dagala		CP0946	Kawang	
CP1014	Chang		CP1561	Dagala		CP0947	Kawang	
CP1015	Chang		CP1641	Dagala		CP0948	Kawang	
CP1016	Chang		CP1642	Dagala		CP0814	Mewang	
CP1017	Chang		CP1243	Genny		CP0878	Mewang	
CP1018	Chang		CP1319	Genny		CP0944	Mewang	
CP1091	Chang		CP1320	Genny		CP0945	Mewang	
CP1092	Chang		CP1399	Genny		CP1012	Mewang	
CP1168	Chang		CP0753	Kawang		CP1013	Mewang	
CP1093	Dagala		CP0754	Kawang		CP1088	Mewang	
CP1094	Dagala		CP0756	Kawang		CP1089	Mewang	
CP1169	Dagala		CP0815	Kawang		CP1090	Mewang	
CP1244	Dagala		CP0816	Kawang		CP1165	Mewang	
CP1321	Dagala		CP0817	Kawang		CP1166	Mewang	
CP1322	Dagala		CP0818	Kawang		CP1167	Mewang	
CP1400	Dagala		CP0879	Kawang		CP1240	Mewang	
CP1401	Dagala		CP0880	Kawang		CP1241	Mewang	



CP1402	Dagala	CP0881	Kawang	CP1242	Mewang
CP1480	Dagala	CP0882	Kawang	CP0752	Naro
CP1481	Dagala				

### 11. Trashigang Forest Division

CP.No.	Gewog	Remarks	CP.No.	Gewog	Remarks	CP.No.	Gewog	Remarks
<b>Trashigang Dzongkhag</b>								
CP1140	Bartsham		CP1849	Kangpara		CP1294	Radhi	
CP1215	Bartsham		CP1850	Kangpara		CP1290	Samkhar	
CP1216	Bartsham		CP1851	Kangpara		CP1291	Samkhar	
CP1141	Bidung		CP1852	Kangpara		CP1368	Samkhar	
CP1217	Bidung		CP1527	Khaling		CP1369	Samkhar	
CP1366	Kanglung		CP1528	Khaling		CP1449	Samkhar	
CP1367	Kanglung		CP1529	Khaling		CP1292	Shongphu	
CP1446	Kanglung		CP1530	Khaling		CP1293	Shongphu	
CP1447	Kanglung		CP1607	Khaling		CP1370	Shongphu	
CP1448	Kanglung		CP1608	Khaling		CP1371	Shongphu	
CP1452	Kangpara		CP1609	Khaling		CP1450	Shongphu	
CP1453	Kangpara		CP1610	Khaling		CP1451	Shongphu	
CP1531	Kangpara		CP1691	Khaling		CP1692	Thrimshing	

CP1532	Kangpara		CP1688	Lumang		CP1771	Thrimshing
CP1533	Kangpara		CP1689	Lumang		CP1848	Thrimshing
CP1611	Kangpara		CP1690	Lumang		CP1926	Thrimshing
CP1612	Kangpara		CP1768	Lumang		CP1445	Uzarung
CP1613	Kangpara		CP1769	Lumang		CP1524	Uzarung
CP1614	Kangpara		CP1770	Lumang		CP1525	Uzarung
CP1615	Kangpara		CP1847	Lumang		CP1526	Uzarung
CP1693	Kangpara		CP1067	Phongme		CP1605	Uzarung
CP1694	Kangpara		CP1068	Phongme		CP1606	Uzarung
CP1695	Kangpara		CP1142	Phongme		CP1136	Yangnyer
CP1696	Kangpara		CP1143	Phongme		CP1212	Yangnyer
CP1772	Kangpara		CP1144	Phongme		CP1213	Yangnyer
CP1773	Kangpara		CP1219	Phongme		CP1214	Yangnyer
CP1774	Kangpara		CP1220	Phongme		CP1288	Yangnyer
CP1775	Kangpara		CP1218	Radhi		CP1289	Yangnyer
<b>Trashiyangtse Dzongkhag</b>							
CP0620	Bumdeyling		CP0996	Toetsho		CP0740	Yangtse
CP0678	Bumdeyling		CP0992	Tongzhang		CP0800	Yangtse
CP0679	Bumdeyling		CP0993	Tongzhang		CP0801	Yangtse
CP0680	Bumdeyling		CP0994	Tongzhang		CP0802	Yangtse

CP0738	Bumdeyling	CP1060	Tongzhang	CP0861	Yangtse
CP1137	Jamkhar	CP1061	Tongzhang	CP0862	Yangtse
CP1138	Jamkhar	CP1062	Tongzhang	CP0863	Yangtse
CP0928	Khamdang	CP0997	Yalang	CP0864	Yangtse
CP1063	Khamdang	CP0998	Yalang	CP0865	Yangtse
CP1139	Ramjar	CP1064	Yalang	CP0925	Yangtse
CP0929	Toetsho	CP1065	Yalang	CP0926	Yangtse
CP0930	Toetsho	CP1066	Yalang	CP0927	Yangtse
CP0995	Toetsho	CP0739	Yangtse		

## 12. Tsirang Forest Division

CP.No.	Gewog	Remarks	CP.No.	Gewog	Remarks	CP.No.	Gewog	Remarks
<b>Tsirang Dzongkhag</b>								
CP2126	Barshong		CP1971	Dunglagang		CP1812	Patala	
CP2201	Barshong		CP1972	Dunglagang	BC3	CP1737	Phuentenchu	
CP2050	Beteni		CP2051	Dunglagang	BC3	CP1813	Phuentenchu	
CP2128	Beteni		CP1969	Gosarling		CP1814	Phuentenchu	
CP2129	Beteni		CP1970	Kikhorthang		CP1815	Phuentenchu	
CP2202	Beteni		CP2127	Mendrelgang		CP1891	Phuentenchu	
CP2203	Beteni		CP1653	Patala		CP1892	Phuentenchu	

CP2204	Beteni	BC3	CP1656	Patala	CP1893	Phuentenchu
CP2274	Beteni		CP1733	Patala	CP2048	Rangthangling
CP2275	Beteni		CP1734	Patala	CP2049	Rangthangling
CP2276	Beteni	BC3	CP1735	Patala	CP1968	Tsholingkhar
CP2337	Beteni		CP1736	Patala	CP1889	Tsirangtoe
CP2338	Beteni	BC3	CP1811	Patala	CP1890	Tsirangtoe

### 13. Wangdue Forest Division

CP.No.	Gewog	Remarks	CP.No.	Gewog	Remarks	CP.No.	Gewog	Remarks
<b>Punakha Dzongkhag</b>								
CP0887	Barp	FD	CP0697	Kabjisa	FD	CP0643	Teowang	FD
CP0952	Barp	FD	CP0758	Kabjisa	RBP	CP0699	Teowang	FD
CP0638	Chubu	FD	CP0824	Lingmukha	FD	CP0700	Teowang	FD
CP0639	Chubu	FD	CP0888	Lingmukha	FD	CP0703	Teowang	FD
CP0698	Chubu	FD	CP0701	Shengana	FD	CP0820	Toeb	RBP
CP0761	Dzomesa	FD	CP0702	Shengana	FD	CP0821	Toeb	FD
CP0823	Dzomesa	FD	CP0762	Shengana	FD	CP0883	Toeb	RBP
CP0953	Goenshari	FD	CP0763	Shengana	FD	CP0884	Toeb	RBP
CP0759	Guma	FD	CP0822	Talo	FD	CP0885	Toeb	FD
CP0760	Guma	FD	CP0640	Teowang	FD	CP0886	Toeb	FD
CP0636	Kabjisa	FD	CP0641	Teowang	FD	CP0950	Toeb	RBP

CP0696	Kabjisa	FD	CP0642	Teowang	FD	CP0951	Toeb	RBP
<b>Wangdue Phodrang Dzongkhag</b>								
CP1102	Athang	BC8	CP1652	Daga		CP0766	Kazhi	BC8
CP1104	Athang	BC8	CP0646	Dangchu	BC8	CP0826	Kazhi	
CP1177	Athang		CP0647	Dangchu		CP0827	Kazhi	
CP1178	Athang		CP0706	Dangchu	BC8	CP1097	KazhiGase Tshogom	
CP1179	Athang	BC8	CP0707	Dangchu		CP1019	Nahi	BC2
CP1180	Athang	BC8	CP0708	Dangchu		CP1020	Nahi	
CP1251	Athang		CP0769	Dangchu		CP1095	Nahi	BC2
CP1252	Athang		CP0770	Dangchu	BC8	CP0767	Nyisho	BC8
CP1253	Athang		CP0830	Dangchu		CP0768	Nyisho	BC8
CP1254	Athang	BC8	CP0831	Dangchu	BC8	CP0828	Nyisho	BC8
CP1329	Athang		CP0893	Dangchu	BC8	CP0829	Nyisho	BC8
CP1330	Athang		CP0894	Dangchu		CP0890	Nyisho	
CP1331	Athang		CP0959	Gangtey	BC8	CP0891	Nyisho	
CP1410	Athang		CP0960	Gangtey		CP0892	Nyisho	
CP1411	Athang		CP1026	Gangtey	BC8	CP0825	Phangyul	
CP1491	Athang		CP1027	Gangtey	BC8	CP0889	Phangyul	
CP0955	Bjena		CP1028	Gangtey		CP0954	Phangyul	
CP0956	Bjena		CP1103	Gangtey	BC8	CP0961	Phobji	

CP0957	Bjena		CP1021	Gase Tshogom		CP0962	Phobji	
CP0958	Bjena	BC8	CP1096	Gase Tshogom	BC2	CP1029	Phobji	
CP1024	Bjena		CP1170	Gase Tshoom		CP1030	Phobji	
CP1025	Bjena		CP1171	Gase Tshoom	BC2	CP1105	Phobji	
CP1101	Bjena		CP1172	Gase Tshoom	BC2	CP1106	Phobji	
CP1325	Daga	BC2	CP1173	Gase Tshoom		CP1022	Rubesa	
CP1326	Daga	BC2	CP1245	Gase Tshoom		CP1023	Rubesa	
CP1327	Daga		CP1246	Gase Tshoom		CP1098	Rubesa	
CP1404	Daga	BC2	CP1247	Gase Tshoom	BC2	CP1099	Rubesa	
CP1406	Daga	BC2	CP1248	Gase Tshoom	BC2	CP1100	Rubesa	
CP1407	Daga		CP1249	Gase Tshoom		CP1174	Rubesa	
CP1408	Daga		CP1323	Gase Tshoom		CP1175	Rubesa	
CP1409	Daga		CP1324	Gase Tshoom	BC2	CP1176	Rubesa	
CP1487	Daga	BC2	CP0581	Kazhi		CP1250	Rubesa	
CP1488	Daga	BC2	CP0582	Kazhi		CP1328	Rubesa	
CP1489	Daga		CP0583	Kazhi		CP0832	Sephu	BC8
CP1490	Daga		CP0584	Kazhi		CP0833	Sephu	BC8
CP1568	Daga	BC2	CP0644	Kazhi		CP0895	Sephu	BC8
CP1569	Daga	BC2	CP0645	Kazhi	BC8	CP0896	Sephu	BC8
CP1570	Daga	BC2	CP0704	Kazhi	BC8	CP0897	Sephu	

CP1571	Daga	BC2	CP0705	Kazhi	BC8	CP0898	Sephu
CP1650	Daga		CP0764	Kazhi		CP0899	Sephu
CP1651	Daga		CP0765	Kazhi		CP0963	Sephu

#### 14. Zhemgang Forest Division

CP.No.	Gewog	Remarks	CP.No.	Gewog	Remarks	CP.No.	Gewog	Remarks
<b>Zhemgang Dzongkhag</b>								
CP1594	Bardo		CP2147	Goshing		CP2148	Ngangla	
CP1595	Bardo		CP2223	Goshing		CP2149	Ngangla	
CP1675	Bardo		CP1270	Nangkor	BC4	CP2224	Ngangla	
CP1676	Bardo		CP1348	Nangkor	BC4	CP2225	Ngangla	
CP1755	Bardo		CP1349	Nangkor	BC4	CP2226	Ngangla	
CP1833	Bardo		CP1350	Nangkor	BC4	CP2293	Ngangla	
CP1834	Bardo		CP1428	Nangkor	BC4	CP2294	Ngangla	
CP1910	Bardo		CP1429	Nangkor	BC4	CP2295	Ngangla	
CP1911	Bardo		CP1430	Nangkor	BC4	CP2296	Ngangla	
CP1912	Bardo		CP1508	Nangkor		CP2354	Ngangla	
CP1987	Bardo		CP1509	Nangkor		CP1431	Shinghar	BC4
CP1988	Bardo		CP1510	Nangkor	BC4	CP1432	Shinghar	BC4
CP1989	Bardo		CP1588	Nangkor		CP1433	Shinghar	

CP1913	Bjoka		CP1589	Nangkor		CP1511	Shingkhar	BC4
CP1991	Bjoka		CP1590	Nangkor		CP1512	Shingkhar	BC4
CP1992	Bjoka		CP1591	Nangkor	BC4	CP1513	Shingkhar	
CP1993	Bjoka		CP1669	Nangkor		CP1514	Shingkhar	
CP2072	Bjoka		CP1670	Nangkor		CP1592	Shingkhar	BC4
CP2073	Bjoka		CP1671	Nangkor		CP1593	Shingkhar	BC4
CP2150	Bjoka		CP1672	Nangkor	BC4	CP1673	Shingkhar	BC4
CP2151	Bjoka		CP1749	Nangkor		CP1674	Shingkhar	BC4
CP2152	Bjoka		CP1750	Nangkor		CP1753	Shingkhar	BC4
CP2153	Bjoka		CP1751	Nangkor		CP1754	Shingkhar	BC4
CP2227	Bjoka		CP1752	Nangkor	BC4	CP1831	Shingkhar	BC4
CP2228	Bjoka		CP1829	Nangkor		CP1832	Shingkhar	BC4
CP2298	Bjoka		CP1830	Nangkor	BC4	CP1506	Trong	
CP1990	Goshing		CP1907	Nangkor	BC4	CP1507	Trong	
CP2068	Goshing		CP1908	Nangkor	BC4	CP1586	Trong	
CP2069	Goshing		CP1909	Nangkor	BC4	CP1587	Trong	
CP2070	Goshing		CP2071	Ngangla		CP1668	Trong	
CP2146	Goshing							



### 15. Bumdeling Wildlife Sanctuary

CP.No.	Gewog	Remarks	CP.No.	Gewog	Remarks	CP.No.	Gewog	Remarks
<b>Lhuntse Dzongkhag</b>								
CP0077	Khoma		CP0264	Khoma		CP0554	Khoma	
CP0116	Khoma		CP0265	Khoma		CP0613	Khoma	
CP0117	Khoma		CP0318	Khoma		CP0614	Khoma	
CP0163	Khoma		CP0319	Khoma		CP0674	Khoma	
CP0164	Khoma		CP0376	Khoma		CP0675	Khoma	
CP0165	Khoma		CP0377	Khoma		CP0734	Khoma	
CP0166	Khoma		CP0432	Khoma		CP0735	Khoma	
CP0167	Khoma		CP0434	Khoma		CP0115	Kurtoe	
CP0212	Khoma		CP0493	Khoma		CP0375	Kurtoe	
CP0213	Khoma		CP0494	Khoma		CP0796	Menji	
CP0214	Khoma		CP0553	Khoma		CP0858	Menji	
CP0215	Khoma							
<b>Mongar Dzongkhag</b>								
CP0797	Sherimung		CP0924	Sherimung		CP1056	Sherimung	
CP0859	Sherimung		CP0989	Sherimung		CP1057	Sherimung	
CP0860	Sherimung		CP0990	Sherimung		CP1058	Sherimung	
CP0922	Sherimung		CP0991	Sherimung		CP1059	Sherimung	

CP0923	Sherimung						
<b>Trashiyangtse Dzongkhag</b>							
CP0216	Bumdeyling		CP0382	Bumdeyling		CP0557	Bumdeyling
CP0217	Bumdeyling		CP0435	Bumdeyling		CP0558	Bumdeyling
CP0266	Bumdeyling		CP0436	Bumdeyling		CP0559	Bumdeyling
CP0267	Bumdeyling		CP0437	Bumdeyling		CP0560	Bumdeyling
CP0268	Bumdeyling		CP0438	Bumdeyling		CP0561	Bumdeyling
CP0269	Bumdeyling		CP0439	Bumdeyling		CP0615	Bumdeyling
CP0270	Bumdeyling		CP0440	Bumdeyling		CP0616	Bumdeyling
CP0320	Bumdeyling		CP0441	Bumdeyling		CP0617	Bumdeyling
CP0321	Bumdeyling		CP0495	Bumdeyling		CP0618	Bumdeyling
CP0322	Bumdeyling		CP0496	Bumdeyling		CP0619	Bumdeyling
CP0323	Bumdeyling		CP0497	Bumdeyling		CP0621	Bumdeyling
CP0324	Bumdeyling		CP0498	Bumdeyling		CP0676	Bumdeyling
CP0325	Bumdeyling		CP0499	Bumdeyling		CP0677	Bumdeyling
CP0326	Bumdeyling		CP0500	Bumdeyling		CP0736	Bumdeyling
CP0378	Bumdeyling		CP0501	Bumdeyling		CP0737	Bumdeyling
CP0379	Bumdeyling		CP0555	Bumdeyling		CP0798	Yangtse
CP0380	Bumdeyling		CP0556	Bumdeyling		CP0799	Yangtse
CP0381	Bumdeyling						

### 16. Jigme Dorji National Park

CP.No.	Gewog	Remarks	CP.No.	Gewog	Remarks	CP.No.	Gewog	Remarks	CP.No.	Gewog	Remarks
<b>Gasa Dzongkhag</b>											
CP0337	Khamae		CP0055	Laya		CP0061	Lunana				
CP0393	Khamae		CP0056	Laya		CP0062	Lunana				
CP0394	Khamae		CP0057	Laya		CP0063	Lunana				
CP0451	Khamae		CP0058	Laya		CP0064	Lunana				
CP0452	Khamae		CP0059	Laya		CP0065	Lunana				
CP0453	Khamae		CP0060	Laya		CP0066	Lunana				
CP0454	Khamae		CP0078	Laya		CP0067	Lunana				
CP0511	Khamae		CP0079	Laya		CP0068	Lunana				
CP0512	Khamae		CP0080	Laya		CP0069	Lunana				
CP0513	Khamae		CP0081	Laya		CP0070	Lunana				
CP0514	Khamae		CP0082	Laya		CP0071	Lunana				
CP0170	Khatoe		CP0083	Laya		CP0089	Lunana				
CP0171	Khatoe		CP0084	Laya		CP0090	Lunana				
CP0221	Khatoe		CP0085	Laya		CP0091	Lunana				
CP0222	Khatoe		CP0086	Laya		CP0092	Lunana				
CP0223	Khatoe		CP0087	Laya		CP0093	Lunana				
CP0224	Khatoe		CP0088	Laya		CP0094	Lunana				

CP0276	Khatoe		CP0118	Laya		CP0095	Lumana	
CP0277	Khatoe		CP0119	Laya		CP0096	Lumana	
CP0278	Khatoe		CP0120	Laya		CP0097	Lumana	
CP0279	Khatoe		CP0121	Laya		CP0098	Lumana	
CP0333	Khatoe		CP0122	Laya		CP0129	Lumana	
CP0334	Khatoe		CP0123	Laya		CP0130	Lumana	
CP0335	Khatoe		CP0124	Laya		CP0131	Lumana	
CP0336	Khatoe		CP0125	Laya		CP0132	Lumana	
CP0390	Khatoe		CP0126	Laya		CP0133	Lumana	
CP0391	Khatoe		CP0127	Laya		CP0134	Lumana	
CP0392	Khatoe		CP0128	Laya		CP0138	Lumana	
CP0449	Khatoe		CP0172	Laya		CP0177	Lumana	
CP0001	Laya		CP0173	Laya		CP0178	Lumana	
CP0002	Laya		CP0174	Laya		CP0179	Lumana	
CP0003	Laya		CP0175	Laya		CP0180	Lumana	
CP0004	Laya		CP0176	Laya		CP0181	Lumana	
CP0005	Laya		CP0225	Laya		CP0227	Lumana	
CP0006	Laya		CP0226	Laya		CP0228	Lumana	
CP0007	Laya		CP0010	Lumana		CP0229	Lumana	
CP0008	Laya		CP0011	Lumana		CP0230	Lumana	

CP0009	Laya		CP0012	Lunana		CP0231	Lunana	
CP0014	Laya		CP0013	Lunana		CP0232	Lunana	
CP0015	Laya		CP0022	Lunana		CP0280	Lunana	
CP0016	Laya		CP0023	Lunana		CP0281	Lunana	
CP0017	Laya		CP0024	Lunana		CP0282	Lunana	
CP0018	Laya		CP0025	Lunana		CP0283	Lunana	
CP0019	Laya		CP0026	Lunana		CP0284	Lunana	
CP0020	Laya		CP0027	Lunana		CP0285	Lunana	
CP0021	Laya		CP0028	Lunana		CP0286	Lunana	
CP0031	Laya		CP0029	Lunana		CP0338	Lunana	
CP0032	Laya		CP0030	Lunana		CP0339	Lunana	
CP0033	Laya		CP0040	Lunana		CP0340	Lunana	
CP0034	Laya		CP0041	Lunana		CP0343	Lunana	
CP0035	Laya		CP0042	Lunana		CP0344	Lunana	
CP0036	Laya		CP0043	Lunana		CP0345	Lunana	
CP0037	Laya		CP0044	Lunana		CP0395	Lunana	
CP0038	Laya		CP0045	Lunana		CP0396	Lunana	
CP0039	Laya		CP0046	Lunana		CP0397	Lunana	
CP0052	Laya		CP0047	Lunana		CP0455	Lunana	
CP0053	Laya		CP0048	Lunana		CP0456	Lunana	

CP0054	Laya	CP0049	Lunana			
<b>Paro Dzongkhag</b>						
CP0687	Doteng	CP0565	Tsento	CP0684		Tsento
CP0688	Doteng	CP0566	Tsento	CP0685		Tsento
CP0749	Doteng	CP0624	Tsento	CP0686		Tsento
CP0813	Doteng	CP0625	Tsento	CP0747		Tsento
CP0506	Tsento	CP0626	Tsento	CP0748		Tsento
CP0564	Tsento	CP0627	Tsento			
<b>Punakha Dzongkhag</b>						
CP0577	Chubu	CP0757	Kabjisa	CP0460		Teowang
CP0637	Chubu	CP0819	Kabjisa	CP0461		Teowang
CP0515	Goenshari	CP0341	Teowang	CP0462		Teowang
CP0516	Goenshari	CP0342	Teowang	CP0517		Teowang
CP0575	Goenshari	CP0398	Teowang	CP0518		Teowang
CP0576	Goenshari	CP0399	Teowang	CP0519		Teowang
CP0573	Kabjisa	CP0400	Teowang	CP0520		Teowang
CP0574	Kabjisa	CP0401	Teowang	CP0521		Teowang
CP0634	Kabjisa	CP0457	Teowang	CP0578		Teowang
CP0635	Kabjisa	CP0458	Teowang	CP0579		Teowang
CP0694	Kabjisa	CP0459	Teowang	CP0580		Teowang

CP0695	Kabjisa								
<b>Thimphu Dzongkhag</b>									
CP0633	Kawang	CP0332	Lingzhi		CP0629		Naro		
CP0691	Kawang	CP0386	Lingzhi		CP0630		Naro		
CP0692	Kawang	CP0387	Lingzhi		CP0631		Naro		
CP0693	Kawang	CP0388	Lingzhi		CP0632		Naro		
CP0755	Kawang	CP0389	Lingzhi		CP0689		Naro		
CP0168	Lingzhi	CP0447	Lingzhi		CP0690		Naro		
CP0169	Lingzhi	CP0448	Lingzhi		CP0751		Naro		
CP0218	Lingzhi	CP0507	Lingzhi		CP0327		Soe		
CP0219	Lingzhi	CP0508	Lingzhi		CP0383		Soe		
CP0220	Lingzhi	CP0567	Lingzhi		CP0384		Soe		
CP0271	Lingzhi	CP0450	Naro		CP0385		Soe		
CP0272	Lingzhi	CP0509	Naro		CP0443		Soe		
CP0273	Lingzhi	CP0510	Naro		CP0444		Soe		
CP0274	Lingzhi	CP0568	Naro		CP0445		Soe		
CP0275	Lingzhi	CP0569	Naro		CP0446		Soe		
CP0328	Lingzhi	CP0570	Naro		CP0503		Soe		Plot falls inside Thimphu Division
CP0329	Lingzhi	CP0571	Naro		CP0504		Soe		
CP0330	Lingzhi	CP0572	Naro		CP0505		Soe		

CP0331	Lingzhi	CP0628	Naro			
--------	---------	--------	------	--	--	--

### 17. Jigme Khesar Strick Nature Reserve

CP.No.	Gewog	Remarks	CP.No.	Gewog	Remarks	CP.No.	Gewog	Remarks
<b>Gasa Dzongkhag</b>								
CP0803	Bji	Outside	CP1305	Bji		CP1383	Sangbay	
CP0866	Bji		CP1306	Bji		CP1384	Sangbay	
CP0867	Bji		CP1470	Gakling	Outside	CP1385	Sangbay	
CP0868	Bji		CP1551	Gakling	Outside	CP1386	Sangbay	
CP0869	Bji		CP1552	Gakling	Outside	CP1387	Sangbay	
CP0870	Bji		CP1553	Gakling	Outside	CP1388	Sangbay	
CP0931	Bji		CP1631	Gakling	Outside	CP1389	Sangbay	Outside
CP0932	Bji		CP1632	Gakling	Outside	CP1464	Sangbay	
CP0933	Bji		CP1633	Gakling	Outside	CP1465	Sangbay	
CP0934	Bji		CP1634	Gakling	Outside	CP1466	Sangbay	
CP0935	Bji		CP1635	Gakling	Outside	CP1467	Sangbay	
CP1000	Bji		CP1710	Gakling	Outside	CP1468	Sangbay	
CP1001	Bji		CP1711	Gakling	Outside	CP1469	Sangbay	Outside
CP1002	Bji		CP1712	Gakling	Outside	CP1546	Sangbay	
CP1003	Bji		CP1713	Gakling	Outside	CP1547	Sangbay	Outside



CP1075	Bji		CP1714	Gakiling	Outside	CP1548	Sangbay	Outside
CP1076	Bji		CP1788	Gakiling	Outside	CP1549	Sangbay	Outside
CP1077	Bji		CP1789	Gakiling	Outside	CP1550	Sangbay	Outside
CP1078	Bji		CP1790	Gakiling	Outside	CP1626	Sangbay	Outside
CP1079	Bji		CP1791	Gakiling	Outside	CP1627	Sangbay	Outside
CP1151	Bji		CP1792	Gakiling	Outside	CP1628	Sangbay	Outside
CP1152	Bji		CP1865	Gakiling	Outside	CP1629	Sangbay	Outside
CP1153	Bji		CP1867	Gakiling	Outside	CP1630	Sangbay	Outside
CP1154	Bji		CP1868	Gakiling	Outside	CP1707	Sangbay	Outside
CP1155	Bji		CP1303	Sangbay		CP1708	Sangbay	Outside
CP1227	Bji		CP1304	Sangbay		CP1709	Sangbay	Outside
CP1228	Bji		CP1307	Sangbay		CP1786	Sangbay	Outside
CP1229	Bji		CP1308	Sangbay		CP1787	Sangbay	Outside
CP1230	Bji							
<b>Samtse Dzongkhag</b>								
CP1382	Norgaygang		CP1462	Norgaygang		CP1463	Norgaygang	
CP1545	Tendu							

18. Jigme Singye Wangchuck National Park

CP.No.	Gewog	Re- marks	CP.No.	Gewog	Remarks	CP.No.	Gewog	Remarks
<b>Sarpang Dzongkhag</b>								
CP1579	Jigmechoeling		CP1741	Jigmechoeling		CP1821	Jigmechoeling	
CP1660	Jigmechoeling		CP1742	Jigmechoeling		CP1822	Jigmechoeling	
CP1661	Jigmechoeling		CP1743	Jigmechoeling		CP1823	Jigmechoeling	
CP1662	Jigmechoeling		CP1744	Jigmechoeling		CP1901	Jigmechoeling	
CP1740	Jigmechoeling		CP1820	Jigmechoeling		CP1902	Jigmechoeling	
<b>Trongsa Dzongkhag</b>								
CP1419	Korphu		CP1664	Korphu		CP1108	Tangsibjee	
CP1420	Korphu		CP1665	Korphu		CP1109	Tangsibjee	
CP1499	Korphu		CP1264	Langthil		CP1110	Tangsibjee	
CP1500	Korphu		CP1265	Langthil		CP1111	Tangsibjee	
CP1501	Korphu		CP1339	Langthil		CP1184	Tangsibjee	
CP1502	Korphu		CP1340	Langthil		CP1185	Tangsibjee	
CP1503	Korphu		CP1341	Langthil		CP1186	Tangsibjee	
CP1504	Korphu		CP1342	Langthil		CP1187	Tangsibjee	
CP1580	Korphu		CP1343	Langthil		CP1188	Tangsibjee	
CP1581	Korphu		CP1421	Langthil		CP1260	Tangsibjee	
CP1582	Korphu		CP1422	Langthil		CP1261	Tangsibjee	

CP1583	Korphu	CP1423	Langthil	CP1262	Tangsibjee
CP1584	Korphu	CP1031	Tangsibjee	CP1263	Tangsibjee
CP1585	Korphu	CP1032	Tangsibjee	CP1338	Tangsibjee
CP1663	Korphu	CP1033	Tangsibjee		
	Tsirang Dzongkhag				
CP1654	Patala	CP1659	Phuentenchu	CP1738	Phuentenchu
<b>Wangdue Phodrang Dzongkhag</b>					
CP1255	Athang	CP1414	Athang	CP1573	Athang
CP1256	Athang	CP1415	Athang	CP1574	Athang
CP1257	Athang	CP1416	Athang	CP1575	Athang
CP1258	Athang	CP1417	Athang	CP1576	Athang
CP1259	Athang	CP1418	Athang	CP1577	Athang
CP1332	Athang	CP1492	Athang	CP1578	Athang
CP1333	Athang	CP1493	Athang	CP1655	Athang
CP1334	Athang	CP1494	Athang	CP1657	Athang
CP1335	Athang	CP1495	Athang	CP1658	Athang
CP1336	Athang	CP1496	Athang	CP1107	Phobji
CP1337	Athang	CP1497	Athang	CP1181	Phobji
CP1412	Athang	CP1498	Athang	CP1182	Phobji
CP1413	Athang	CP1572	Athang	CP1183	Phobji

Zhemgang Dzongkhag						
CP1666	Trong	CP1746	Trong	Inside	CP1824	Trong
CP1667	Trong	CP1747	Trong	Inside	CP1825	Trong
CP1745	Trong					

### 19. Jomotshangkha Wildlife Sanctuary

CP.No.	Gewog	Remarks	CP.No.	Gewog	Remarks	CP.No.	Gewog	Remarks
Samdrup Jongkhar Dzongkhag								
CP2098	Langchenphu		CP1855	Lauri	Outside	CP2315	Pemathang	
CP2172	Langchenphu		CP1856	Lauri	Outside	CP2371	Phuntsh-othang	
CP2173	Langchenphu		CP1857	Lauri	Outside	CP2170	Samrang	
CP2174	Langchenphu		CP1858	Lauri	Outside	CP2245	Samrang	
CP2175	Langchenphu		CP1935	Lauri	Outside	CP2246	Samrang	
CP2176	Langchenphu		CP1929	Martshala	Outside	CP1859	Serthi	Outside
CP2247	Langchenphu		CP1853	Martshala	Outside	CP1933	Serthi	Outside
CP2248	Langchenphu		CP1854	Martshala	Outside	CP1934	Serthi	Outside
CP2249	Langchenphu		CP1928	Martshala	Outside	CP1936	Serthi	Outside
CP2250	Langchenphu		CP1930	Martshala	Outside	CP1937	Serthi	Outside
CP2316	Langchenphu		CP1931	Martshala	Outside	CP1938	Serthi	Outside
CP2317	Langchenphu		CP1932	Martshala	Outside	CP2011	Serthi	Outside

CP1537	Lauri	Outside	CP2008	Martshala	Outside	CP2012	Serthi	Outside
CP1618	Lauri	Outside	CP2009	Martshala	Outside	CP2013	Serthi	Outside
CP1619	Lauri	Outside	CP2010	Martshala	Outside	CP2014	Serthi	Outside
CP1698	Lauri	Outside	CP2088	Martshala	Outside	CP2015	Serthi	Outside
CP1699	Lauri	Outside	CP2089	Martshala	Outside	CP2016	Serthi	Outside
CP1700	Lauri	Outside	CP2090	Martshala	Outside	CP2017	Serthi	Outside
CP1701	Lauri	Outside	CP2091	Martshala	Outside	CP2018	Serthi	Outside
CP1776	Lauri	Outside	CP2092	Martshala	Outside	CP2093	Serthi	Outside
CP1777	Lauri	Outside	CP2165	Martshala	Outside	CP2094	Serthi	
CP1778	Lauri	Outside	CP2166	Martshala	Outside	CP2095	Serthi	Outside
CP1779	Lauri	Outside	CP2167	Martshala	Outside	CP2096	Serthi	
CP1780	Lauri	Outside	CP2241	Martshala	Outside	CP2097	Serthi	
CP1781	Lauri	Outside	CP2314	Pemathang	Outside	CP2171	Serthi	

## 20. Phrumsengla National Park

CP.No.	Gewog	Remarks	CP.No.	Gewog	Remarks	CP.No.	Gewog	Remarks	CP.No.	Gewog	Remarks
<b>Bumthang Dzongkhag</b>											
CP1044	Chumey		CP1198	Chumey		CP0981	Ura				
CP1119	Chumey		CP1272	Chumey		CP1047	Ura				
CP1120	Chumey		CP0849	Tang		CP1048	Ura				
CP1121	Chumey		CP0850	Tang		CP1123	Ura				
CP1196	Chumey		CP0913	Ura		CP1124	Ura				
CP1197	Chumey		CP0914	Ura		CP1199	Ura				
<b>Lhuntse Dzongkhag</b>											
CP0667	Gangzur		CP1049	Jaray		CP0851	Metsho				
CP0668	Gangzur		CP1125	Jaray		CP0852	Metsho				
CP0669	Gangzur		CP1126	Jaray		CP0915	Metsho				
CP0727	Gangzur		CP0789	Metsho		CP0916	Metsho				
CP0728	Gangzur		CP0790	Metsho		CP0982	Metsho				
CP0729	Gangzur										
<b>Mongar Dzongkhag</b>											
CP1200	Saling		CP1278	Saling		CP1435	Saling				
CP1201	Saling		CP1279	Saling		CP1127	Tsamang				
CP1202	Saling		CP1354	Saling		CP1203	Tsamang				

CP1276	Saling		CP1355	Saling		CP1204	Tsamang
CP1277	Saling		CP1356	Saling		CP1280	Tsamang
<b>Zhemgang Dzongkhag</b>							
CP1195	Nangkor		CP1274	Shingkharchar		CP1352	Shingkharchar
CP1271	Nangkor		CP1275	Shingkharchar		CP1353	Shingkharchar
CP1273	Shingkharchar		CP1351	Shingkharchar			

### 21. Phibsoo Wildlife Sanctuary

CP.No.	Gewog	Remarks	CP.No.	Gewog	Remarks	CP.No.	Gewog	Remarks
<b>Dagana Dzongkhag</b>								
CP2336	Nichula		CP2411	Nichula		CP2421	Nichula	
CP2382	Nichula		CP2412	Nichula		CP2422	Nichula	
CP2383	Nichula		CP2413	Nichula		CP2423	Nichula	
CP2384	Nichula							
<b>Sarpang Dzongkhag</b>								
CP2339	Singhi		CP2387	Singhi		CP2416	Singhi	
CP2385	Singhi		CP2414	Singhi		CP2424	Singhi	
CP2386	Singhi		CP2415	Singhi				

## 22. Royal Manas National Park

CP.No.	Gewog	Remarks	CP.No.	Gewog	Remarks	CP.No.	Gewog	Remarks
<b>Pemagatshel Dzongkhag</b>								
CP2355	Norbugang	Norbugang	CP2357	Norbugang		CP2359	Norbugang	
CP2356	Norbugang	Norbugang	CP2358	Norbugang		CP2399	Norbugang	
<b>Sarpang Dzongkhag</b>								
CP1903	Jigmechoeling		CP2345	Taklai		CP2392	Taklai	
CP1982	Jigmechoeling		CP2346	Taklai		CP2139	Umling	
CP1983	Jigmechoeling		CP2388	Taklai		CP2140	Umling	
CP2061	Jigmechoeling		CP2389	Taklai		CP2141	Umling	
CP2062	Jigmechoeling		CP2390	Taklai		CP2216	Umling	
CP2063	Jigmechoeling		CP2391	Taklai				
<b>Zhemgang Division</b>								
CP2353	Ngangla		CP2220	Phangkhar		CP2352	Phangkhar	
CP2397	Ngangla		CP2221	Phangkhar		CP2393	Phangkhar	
CP2398	Ngangla		CP2222	Phangkhar		CP2394	Phangkhar	
CP1985	Phangkhar		CP2286	Phangkhar		CP2395	Phangkhar	
CP2064	Phangkhar		CP2287	Phangkhar		CP2396	Phangkhar	
CP2065	Phangkhar		CP2288	Phangkhar		CP1748	Trong	
CP2066	Phangkhar		CP2289	Phangkhar		CP1826	Trong	



CP2067	Phangkhar		CP2290	Phangkhar	CP1827	Trong
CP2142	Phangkhar		CP2291	Phangkhar	CP1828	Trong
CP2143	Phangkhar		CP2292	Phangkhar	CP1904	Trong
CP2144	Phangkhar		CP2347	Phangkhar	CP1905	Trong
CP2145	Phangkhar		CP2348	Phangkhar	CP1906	Trong
CP2217	Phangkhar		CP2349	Phangkhar	CP1984	Trong
CP2218	Phangkhar		CP2350	Phangkhar	CP1986	Trong
CP2219	Phangkhar		CP2351	Phangkhar		

### 23. Sakteng Wildlife Sanctuary

CP.No.	Gewog	Remarks	CP.No.	Gewog	Remarks	CP.No.	Gewog	Remarks
<b>Trashigang Dzongkhag</b>								
CP1374	Merak		CP1373	Merak	Outside	CP1148	Sakteng	
CP1375	Merak		CP1534	Merak	Outside	CP1149	Sakteng	
CP1376	Merak		CP1616	Merak	BC6 but outside PA	CP1150	Sakteng	
CP1378	Merak		CP1617	Merak	BC6 but outside PA	CP1221	Sakteng	
CP1379	Merak		CP1697	Merak	BC6 but outside PA	CP1222	Sakteng	
CP1380	Merak		CP1539	Merak		CP1223	Sakteng	
CP1454	Merak		CP1540	Merak		CP1224	Sakteng	
CP1455	Merak		CP1620	Merak		CP1225	Sakteng	

CP1456	Merak		CP0999	Sakteng		CP1226	Sakteng	
CP1457	Merak		CP1069	Sakteng		CP1297	Sakteng	
CP1458	Merak		CP1070	Sakteng		CP1298	Sakteng	
CP1459	Merak		CP1071	Sakteng		CP1299	Sakteng	
CP1535	Merak		CP1072	Sakteng		CP1300	Sakteng	
CP1536	Merak		CP1073	Sakteng		CP1301	Sakteng	
CP1538	Merak		CP1074	Sakteng		CP1302	Sakteng	
CP1295	Merak	Outside	CP1145	Sakteng		CP1377	Sakteng	
CP1296	Merak	Outside	CP1146	Sakteng		CP1381	Sakteng	
CP1372	Merak	Outside	CP1147	Sakteng				

#### 24. Wangchuck Centennial National Park

CP.No.	Gewog	Remarks	CP.No.	Gewog	Remarks	CP.No.	Gewog	Remarks
<b>Bumthang Dzongkhag</b>								
CP0075	Chokhor		CP0304	Chokhor		CP0596	Chokhor	
CP0104	Chokhor		CP0305	Chokhor		CP0597	Chokhor	
CP0105	Chokhor		CP0306	Chokhor		CP0598	Chokhor	
CP0106	Chokhor		CP0358	Chokhor		CP0599	Chokhor	
CP0107	Chokhor		CP0359	Chokhor		CP0600	Chokhor	
CP0108	Chokhor		CP0360	Chokhor		CP0657	Chokhor	

CP0109	Chokhor	CP0361	Chokhor	CP0658	Chokhor	
CP0110	Chokhor	CP0362	Chokhor	CP0659	Chokhor	
CP0144	Chokhor	CP0363	Chokhor	CP0660	Chokhor	
CP0145	Chokhor	CP0364	Chokhor	CP0661	Chokhor	
CP0146	Chokhor	CP0414	Chokhor	CP0718	Chokhor	
CP0147	Chokhor	CP0415	Chokhor	CP0719	Chokhor	
CP0148	Chokhor	CP0416	Chokhor	CP0720	Chokhor	
CP0149	Chokhor	CP0417	Chokhor	CP0721	Chokhor	
CP0150	Chokhor	CP0418	Chokhor	CP0421	Tang	
CP0194	Chokhor	CP0419	Chokhor	CP0422	Tang	
CP0195	Chokhor	CP0420	Chokhor	CP0423	Tang	
CP0196	Chokhor	CP0475	Chokhor	CP0482	Tang	
CP0197	Chokhor	CP0476	Chokhor	CP0483	Tang	
CP0198	Chokhor	CP0477	Chokhor	CP0542	Tang	
CP0199	Chokhor	CP0478	Chokhor	CP0543	Tang	
CP0200	Chokhor	CP0479	Chokhor	CP0601	Tang	
CP0245	Chokhor	CP0480	Chokhor	CP0602	Tang	
CP0246	Chokhor	CP0481	Chokhor	CP0603	Tang	
CP0247	Chokhor	CP0535	Chokhor	CP0604	Tang	
CP0248	Chokhor	CP0536	Chokhor	CP0605	Tang	

CP0249	Chokhor	CP0537	Chokhor	CP0662	Tang	
CP0250	Chokhor	CP0538	Chokhor	CP0663	Tang	
CP0251	Chokhor	CP0539	Chokhor	CP0664	Tang	
CP0300	Chokhor	CP0540	Chokhor	CP0722	Tang	
CP0301	Chokhor	CP0541	Chokhor	CP0723	Tang	
CP0302	Chokhor	CP0595	Chokhor	CP0724	Tang	
CP0303	Chokhor					
<b>Gasa Dzongkhag</b>						
CP0050	Lunana	CP0137	Lunana	CP0190	Lunana	
CP0051	Lunana	CP0139	Lunana	CP0233	Lunana	
CP0072	Lunana	CP0140	Lunana	CP0234	Lunana	
CP0073	Lunana	CP0182	Lunana	CP0235	Lunana	
CP0074	Lunana	CP0183	Lunana	CP0240	Lunana	
CP0099	Lunana	CP0184	Lunana	CP0241	Lunana	
CP0100	Lunana	CP0185	Lunana	CP0287	Lunana	
CP0101	Lunana	CP0188	Lunana	CP0288	Lunana	
CP0135	Lunana	CP0189	Lunana	CP0289	Lunana	
CP0136	Lunana					

Lhuntse Dzongkhag							
CP0307	Gangzur		CP0155	Kurtoe		CP0259	Kurtoe
CP0367	Gangzur		CP0156	Kurtoe		CP0260	Kurtoe
CP0424	Gangzur		CP0157	Kurtoe		CP0261	Kurtoe
CP0425	Gangzur		CP0158	Kurtoe		CP0262	Kurtoe
CP0426	Gangzur		CP0159	Kurtoe		CP0263	Kurtoe
CP0427	Gangzur		CP0160	Kurtoe		CP0308	Kurtoe
CP0430	Gangzur		CP0161	Kurtoe		CP0309	Kurtoe
CP0431	Gangzur		CP0162	Kurtoe		CP0310	Kurtoe
CP0484	Gangzur		CP0201	Kurtoe		CP0311	Kurtoe
CP0485	Gangzur		CP0202	Kurtoe		CP0312	Kurtoe
CP0486	Gangzur		CP0203	Kurtoe		CP0313	Kurtoe
CP0487	Gangzur		CP0204	Kurtoe		CP0314	Kurtoe
CP0488	Gangzur		CP0205	Kurtoe		CP0315	Kurtoe
CP0544	Gangzur		CP0206	Kurtoe		CP0316	Kurtoe
CP0545	Gangzur		CP0207	Kurtoe		CP0317	Kurtoe
CP0546	Gangzur		CP0208	Kurtoe		CP0365	Kurtoe
CP0547	Gangzur		CP0209	Kurtoe		CP0366	Kurtoe
CP0076	Kurtoe		CP0210	Kurtoe		CP0368	Kurtoe
CP0111	Kurtoe		CP0211	Kurtoe		CP0369	Kurtoe

CP0112	Kurtoe	CP0252	Kurtoe	CP0370	Kurtoe
CP0113	Kurtoe	CP0253	Kurtoe	CP0371	Kurtoe
CP0114	Kurtoe	CP0254	Kurtoe	CP0372	Kurtoe
CP0151	Kurtoe	CP0255	Kurtoe	CP0373	Kurtoe
CP0152	Kurtoe	CP0256	Kurtoe	CP0374	Kurtoe
CP0153	Kurtoe	CP0257	Kurtoe	CP0428	Kurtoe
CP0154	Kurtoe	CP0258	Kurtoe	CP0429	Kurtoe
<b>Trongsa Dzongkhag</b>					
CP0474	Nubee	CP0653	Nubee	CP0712	Nubee
CP0534	Nubee	CP0654	Nubee	CP0713	Nubee
CP0593	Nubee	CP0655	Nubee	CP0714	Nubee
CP0594	Nubee	CP0710	Nubee	CP0715	Nubee
CP0651	Nubee	CP0711	Nubee	CP0773	Nubee
CP0652	Nubee				
<b>Wangdue Phodrang Dzongkhag</b>					
CP0648	Dangchu	CP0143	Sephu	CP0411	Sephu
CP0186	Kazhi	CP0187	Sephu	CP0412	Sephu
CP0236	Kazhi	CP0191	Sephu	CP0413	Sephu
CP0237	Kazhi	CP0192	Sephu	CP0467	Sephu
CP0290	Kazhi	CP0193	Sephu	CP0468	Sephu

CP0291	Kazhi		CP0238	Sephu		CP0469	Sephu	
CP0346	Kazhi		CP0239	Sephu		CP0470	Sephu	
CP0347	Kazhi		CP0242	Sephu		CP0471	Sephu	
CP0348	Kazhi		CP0243	Sephu		CP0472	Sephu	
CP0349	Kazhi		CP0244	Sephu		CP0473	Sephu	
CP0402	Kazhi		CP0292	Sephu		CP0527	Sephu	
CP0403	Kazhi		CP0293	Sephu		CP0528	Sephu	
CP0404	Kazhi		CP0294	Sephu		CP0529	Sephu	
CP0405	Kazhi		CP0295	Sephu		CP0530	Sephu	
CP0406	Kazhi		CP0296	Sephu		CP0531	Sephu	
CP0463	Kazhi		CP0297	Sephu		CP0532	Sephu	
CP0464	Kazhi		CP0298	Sephu		CP0533	Sephu	
CP0465	Kazhi		CP0299	Sephu		CP0587	Sephu	
CP0466	Kazhi		CP0350	Sephu		CP0588	Sephu	
CP0522	Kazhi		CP0351	Sephu		CP0589	Sephu	
CP0523	Kazhi		CP0352	Sephu		CP0590	Sephu	
CP0524	Kazhi		CP0353	Sephu		CP0591	Sephu	
CP0525	Kazhi		CP0354	Sephu		CP0592	Sephu	
CP0526	Kazhi		CP0355	Sephu		CP0649	Sephu	
CP0585	Kazhi		CP0356	Sephu		CP0650	Sephu	

CP0586	Kazhi	CP0357	Sephu	CP0709	Sephu
CP0102	Sephu	CP0407	Sephu	CP0771	Sephu
CP0103	Sephu	CP0408	Sephu	CP0772	Sephu
CP0141	Sephu	CP0409	Sephu	CP0834	Sephu
CP0142	Sephu	CP0410	Sephu		

### 25. Aboveground understory, litter and soil carbon sampling plots

CP_No	Dzongkhag	Office	CP_No	Dzongkhag	Office
CP0656	Bumthang	DFO, Bumthang	CP0436	Trashiyangtse	BWS
CP0666	Bumthang	DFO, Bumthang	CP0441	Trashiyangtse	BWS
CP0716	Bumthang	DFO, Bumthang	CP0496	Trashiyangtse	BWS
CP0726	Bumthang	DFO, Bumthang	CP0501	Trashiyangtse	BWS
CP0776	Trongsa	DFO, Bumthang	CP0556	Trashiyangtse	BWS
CP0781	Bumthang	DFO, Bumthang	CP0561	Trashiyangtse	BWS
CP0786	Bumthang	DFO, Bumthang	CP0616	Trashiyangtse	BWS
CP0836	Trongsa	DFO, Bumthang	CP0621	Trashiyangtse	BWS
CP0841	Bumthang	DFO, Bumthang	CP0676	Trashiyangtse	BWS
CP0846	Bumthang	DFO, Bumthang	CP0736	Trashiyangtse	BWS
CP0901	Trongsa	DFO, Bumthang	CP0796	Lhuntse	BWS
CP0906	Bumthang	DFO, Bumthang	CP0991	Mongar	BWS



CP0911	Bumthang	DFO, Bumthang	CP1056	Mongar	BWS
CP0966	Trongsa	DFO, Bumthang	CP1486	Dagana	DFO, Dagana
CP0971	Bumthang	DFO, Bumthang	CP1566	Dagana	DFO, Dagana
CP0976	Bumthang	DFO, Bumthang	CP1646	Dagana	DFO, Dagana
CP1036	Trongsa	DFO, Bumthang	CP1726	Dagana	DFO, Dagana
CP1041	Bumthang	DFO, Bumthang	CP1731	Dagana	DFO, Dagana
CP1046	Bumthang	DFO, Bumthang	CP1801	Dagana	DFO, Dagana
CP1116	Trongsa	DFO, Bumthang	CP1806	Dagana	DFO, Dagana
CP1191	Trongsa	DFO, Bumthang	CP1881	Dagana	DFO, Dagana
CP1266	Trongsa	DFO, Bumthang	CP1886	Dagana	DFO, Dagana
CP1346	Trongsa	DFO, Bumthang	CP1961	Dagana	DFO, Dagana
CP1426	Trongsa	DFO, Bumthang	CP1966	Dagana	DFO, Dagana
CP0116	Lhuntse	BWS	CP2041	Dagana	DFO, Dagana
CP0166	Lhuntse	BWS	CP2046	Dagana	DFO, Dagana
CP0216	Trashiyangtse	BWS	CP2121	Dagana	DFO, Dagana
CP0266	Trashiyangtse	BWS	CP2196	Dagana	DFO, Dagana
CP0321	Trashiyangtse	BWS	CP2271	Dagana	DFO, Dagana
CP0326	Trashiyangtse	BWS	CP2331	Dagana	DFO, Dagana
CP0376	Lhuntse	BWS	CP2381	Dagana	DFO, Dagana
CP0381	Trashiyangtse	BWS	CP2406	Dagana	DFO, Dagana

CP1556	Chhukha	DFO, Gedu	CP0081	Gasa	JDNP
CP1636	Chhukha	DFO, Gedu	CP0086	Gasa	JDNP
CP1716	Chhukha	DFO, Gedu	CP0091	Gasa	JDNP
CP1721	Chhukha	DFO, Gedu	CP0096	Gasa	JDNP
CP1796	Chhukha	DFO, Gedu	CP0121	Gasa	JDNP
CP1871	Chhukha	DFO, Gedu	CP0126	Gasa	JDNP
CP1876	Chhukha	DFO, Gedu	CP0131	Gasa	JDNP
CP1951	Chhukha	DFO, Gedu	CP0171	Gasa	JDNP
CP1956	Chhukha	DFO, Gedu	CP0176	Gasa	JDNP
CP2031	Chhukha	DFO, Gedu	CP0181	Gasa	JDNP
CP2036	Chhukha	DFO, Gedu	CP0221	Gasa	JDNP
CP2111	Chhukha	DFO, Gedu	CP0226	Gasa	JDNP
CP2116	Chhukha	DFO, Gedu	CP0231	Gasa	JDNP
CP2186	Chhukha	DFO, Gedu	CP0271	Thimphu	JDNP
CP2191	Chhukha	DFO, Gedu	CP0276	Gasa	JDNP
CP2261	Chhukha	DFO, Gedu	CP0281	Gasa	JDNP
CP2266	Chhukha	DFO, Gedu	CP0286	Gasa	JDNP
CP2326	Chhukha	DFO, Gedu	CP0331	Thimphu	JDNP
CP2376	Chhukha	DFO, Gedu	CP0336	Gasa	JDNP
CP0001	Gasa	JDNP	CP0341	Punakha	JDNP

CP0006	Gasa	JDNP	CP0386	Thimphu	JDNP
CP0011	Gasa	JDNP	CP0391	Gasa	JDNP
CP0016	Gasa	JDNP	CP0396	Gasa	JDNP
CP0021	Gasa	JDNP	CP0401	Punakha	JDNP
CP0026	Gasa	JDNP	CP0446	Thimphu	JDNP
CP0031	Gasa	JDNP	CP0451	Gasa	JDNP
CP0036	Gasa	JDNP	CP0456	Gasa	JDNP
CP0041	Gasa	JDNP	CP0461	Punakha	JDNP
CP0046	Gasa	JDNP	CP0506	Paro	JDNP
CP0056	Gasa	JDNP	CP0511	Gasa	JDNP
CP0061	Gasa	JDNP	CP0516	Punakha	JDNP
CP0066	Gasa	JDNP	CP0521	Punakha	JDNP
CP0071	Gasa	JDNP	CP0566	Paro	JDNP
CP0571	Thimphu	JDNP	CP1501	Trongsa	JSWNP
CP0576	Punakha	JDNP	CP1576	Wangdue	JSWNP
CP0626	Paro	JDNP	CP1581	Trongsa	JSWNP
CP0631	Thimphu	JDNP	CP1661	Sarpang	JSWNP
CP0686	Paro	JDNP	CP1666	Zhemgang	JSWNP
CP0691	Thimphu	JDNP	CP1741	Sarpang	JSWNP
CP0751	Thimphu	JDNP	CP1746	Zhemgang	JSWNP

CP0866	Haa	JKSNR	CP1821	Sarpang	JSWNP
CP0931	Haa	JKSNR	CP1901	Sarpang	JSWNP
CP1001	Haa	JKSNR	CP1701	Samdrup Jongkhar	JWS
CP1076	Haa	JKSNR	CP1776	Samdrup Jongkhar	JWS
CP1151	Haa	JKSNR	CP1781	Samdrup Jongkhar	JWS
CP1306	Haa	JKSNR	CP1856	Samdrup Jongkhar	JWS
CP1386	Haa	JKSNR	CP1931	Samdrup Jongkhar	JWS
CP1466	Haa	JKSNR	CP1936	Samdrup Jongkhar	JWS
CP1546	Haa	JKSNR	CP2011	Samdrup Jongkhar	JWS
CP1551	Haa	JKSNR	CP2016	Samdrup Jongkhar	JWS
CP1626	Haa	JKSNR	CP2091	Samdrup Jongkhar	JWS
CP1631	Haa	JKSNR	CP2096	Samdrup Jongkhar	JWS
CP1711	Haa	JKSNR	CP2166	Samdrup Jongkhar	JWS
CP1786	Haa	JKSNR	CP2171	Samdrup Jongkhar	JWS
CP1791	Haa	JKSNR	CP2176	Samdrup Jongkhar	JWS
CP1031	Trongsa	JSWNP	CP2241	Samdrup Jongkhar	JWS
CP1111	Trongsa	JSWNP	CP2246	Samdrup Jongkhar	JWS
CP1181	Wangdue	JSWNP	CP2316	Samdrup Jongkhar	JWS
CP1186	Trongsa	JSWNP	CP2371	Samdrup Jongkhar	JWS
CP1256	Wangdue	JSWNP	CP0491	Lhuntse	DFO, Mongar

CP1261	Trongsa	JSWNP	CP0551	Lhuntse	DFO, Mongar
CP1336	Wangdue	JSWNP	CP0606	Lhuntse	DFO, Mongar
CP1341	Trongsa	JSWNP	CP0611	Lhuntse	DFO, Mongar
CP1416	Wangdue	JSWNP	CP0671	Lhuntse	DFO, Mongar
CP1421	Trongsa	JSWNP	CP0731	Lhuntse	DFO, Mongar
CP1496	Wangdue	JSWNP	CP0791	Lhuntse	DFO, Mongar
CP0856	Lhuntse	DFO, Mongar	CP1011	Paro	DFO, Paro
CP0921	Lhuntse	DFO, Mongar	CP1081	Haa	DFO, Paro
CP0986	Lhuntse	DFO, Mongar	CP1086	Paro	DFO, Paro
CP1051	Lhuntse	DFO, Mongar	CP1156	Haa	DFO, Paro
CP1131	Mongar	DFO, Mongar	CP1161	Paro	DFO, Paro
CP1206	Mongar	DFO, Mongar	CP1231	Haa	DFO, Paro
CP1211	Mongar	DFO, Mongar	CP1236	Paro	DFO, Paro
CP1281	Mongar	DFO, Mongar	CP1311	Haa	DFO, Paro
CP1286	Mongar	DFO, Mongar	CP1316	Paro	DFO, Paro
CP1361	Mongar	DFO, Mongar	CP1391	Haa	DFO, Paro
CP1436	Mongar	DFO, Mongar	CP1396	Paro	DFO, Paro
CP1441	Mongar	DFO, Mongar	CP1471	Haa	DFO, Paro
CP1516	Mongar	DFO, Mongar	CP1476	Paro	DFO, Paro
CP1521	Mongar	DFO, Mongar	CP1686	Pemagatshel	DFO, Pemagatshel

CP1596	Mongar	DFO, Mongar	CP1766	Pemagatshel	DFO, Pemagatshel
CP1601	Mongar	DFO, Mongar	CP1846	Pemagatshel	DFO, Pemagatshel
CP1681	Mongar	DFO, Mongar	CP1921	Pemagatshel	DFO, Pemagatshel
CP1756	Mongar	DFO, Mongar	CP2001	Pemagatshel	DFO, Pemagatshel
CP1761	Mongar	DFO, Mongar	CP2076	Pemagatshel	DFO, Pemagatshel
CP1836	Mongar	DFO, Mongar	CP2081	Pemagatshel	DFO, Pemagatshel
CP1841	Mongar	DFO, Mongar	CP2156	Pemagatshel	DFO, Pemagatshel
CP1916	Mongar	DFO, Mongar	CP2231	Pemagatshel	DFO, Pemagatshel
CP1996	Mongar	DFO, Mongar	CP2301	Pemagatshel	DFO, Pemagatshel
CP0681	Paro	DFO, Paro	CP2361	Pemagatshel	DFO, Pemagatshel
CP0741	Haa	DFO, Paro	CP2401	Pemagatshel	DFO, Pemagatshel
CP0746	Paro	DFO, Paro	CP0851	Lhuntse	PNP
CP0806	Haa	DFO, Paro	CP0916	Lhuntse	PNP
CP0811	Paro	DFO, Paro	CP0981	Bumthang	PNP
CP0871	Haa	DFO, Paro	CP1121	Bumthang	PNP
CP0876	Paro	DFO, Paro	CP1126	Lhuntse	PNP
CP0936	Haa	DFO, Paro	CP1196	Bumthang	PNP
CP0941	Paro	DFO, Paro	CP1201	Mongar	PNP
CP1006	Haa	DFO, Paro	CP1271	Zhemgang	PNP
CP1276	Mongar	PNP	CP1706	Samtse	DFO, Samtse

CP1351	Zhemgang	PNP	CP1861	Samtse	DFO, Samtse
CP1356	Mongar	PNP	CP1866	Samtse	DFO, Samtse
CP2336	Dagana	PWS	CP1941	Samtse	DFO, Samtse
CP2386	Sarpang	PWS	CP1946	Samtse	DFO, Samtse
CP2411	Dagana	PWS	CP2021	Samtse	DFO, Samtse
CP2416	Sarpang	PWS	CP2026	Samtse	DFO, Samtse
CP2421	Dagana	PWS	CP2101	Samtse	DFO, Samtse
CP1826	Zhemgang	RMNP	CP2106	Samtse	DFO, Samtse
CP1906	Zhemgang	RMNP	CP2181	Samtse	DFO, Samtse
CP1986	Zhemgang	RMNP	CP2251	Samtse	DFO, Samtse
CP2061	Sarpang	RMNP	CP2256	Samtse	DFO, Samtse
CP2066	Zhemgang	RMNP	CP2321	Samtse	DFO, Samtse
CP2141	Sarpang	RMNP	CP1816	Sarpang	DFO, Sarpang
CP2216	Sarpang	RMNP	CP1896	Sarpang	DFO, Sarpang
CP2221	Zhemgang	RMNP	CP1976	Sarpang	DFO, Sarpang
CP2286	Zhemgang	RMNP	CP1981	Sarpang	DFO, Sarpang
CP2291	Zhemgang	RMNP	CP2056	Sarpang	DFO, Sarpang
CP2346	Sarpang	RMNP	CP2131	Sarpang	DFO, Sarpang
CP2351	Zhemgang	RMNP	CP2136	Sarpang	DFO, Sarpang
CP2356	Pemagatshel	RMNP	CP2206	Sarpang	DFO, Sarpang

CP2391	Sarpang	RMNP		CP2211	Sarpang	DFO, Sarpang
CP2396	Zhemgang	RMNP		CP2281	Sarpang	DFO, Sarpang
CP2006	Samdrup Jongkhar	DFO, Samdrup Jongkhar		CP2341	Sarpang	DFO, Sarpang
CP2086	Samdrup Jongkhar	DFO, Samdrup Jongkhar		CP1071	Trashigang	SWS
CP2161	Samdrup Jongkhar	DFO, Samdrup Jongkhar		CP1146	Trashigang	SWS
CP2236	Samdrup Jongkhar	DFO, Samdrup Jongkhar		CP1221	Trashigang	SWS
CP2306	Samdrup Jongkhar	DFO, Samdrup Jongkhar		CP1226	Trashigang	SWS
CP2311	Samdrup Jongkhar	DFO, Samdrup Jongkhar		CP1301	Trashigang	SWS
CP2366	Samdrup Jongkhar	DFO, Samdrup Jongkhar		CP1376	Trashigang	SWS
CP1461	Samtse	DFO, Samtse		CP1381	Trashigang	SWS
CP1541	Samtse	DFO, Samtse		CP1456	Trashigang	SWS
CP1621	Samtse	DFO, Samtse		CP1536	Trashigang	SWS
CP0756	Thimphu	DFO, Thimphu		CP1061	Trashiyangtse	DFO, Trashigang
CP0816	Thimphu	DFO, Thimphu		CP1066	Trashiyangtse	DFO, Trashigang
CP0881	Thimphu	DFO, Thimphu		CP1136	Trashigang	DFO, Trashigang
CP0946	Thimphu	DFO, Thimphu		CP1141	Trashigang	DFO, Trashigang
CP1016	Thimphu	DFO, Thimphu		CP1216	Trashigang	DFO, Trashigang
CP1091	Thimphu	DFO, Thimphu		CP1291	Trashigang	DFO, Trashigang
CP1166	Thimphu	DFO, Thimphu		CP1296	Trashigang	DFO, Trashigang
CP1241	Thimphu	DFO, Thimphu		CP1366	Trashigang	DFO, Trashigang



CP1321	Thimphu	DFO, Thimphu	CPI371	Trashigang	DFO, Trashigang
CP1401	Thimphu	DFO, Thimphu	CPI446	Trashigang	DFO, Trashigang
CP1481	Thimphu	DFO, Thimphu	CPI451	Trashigang	DFO, Trashigang
CP1561	Thimphu	DFO, Thimphu	CPI526	Trashigang	DFO, Trashigang
CP1641	Thimphu	DFO, Thimphu	CPI531	Trashigang	DFO, Trashigang
CP0801	Trashiyangtse	DFO, Trashigang	CPI606	Trashigang	DFO, Trashigang
CP0861	Trashiyangtse	DFO, Trashigang	CPI611	Trashigang	DFO, Trashigang
CP0926	Trashiyangtse	DFO, Trashigang	CPI616	Trashigang	DFO, Trashigang
CP0996	Trashiyangtse	DFO, Trashigang			

CP1691	Trashigang	DFO, Trashigang	CP0641	Punakha	DFO, Wangdue
CP1696	Trashigang	DFO, Trashigang	CP0646	Wangdue	DFO, Wangdue
CP1771	Trashigang	DFO, Trashigang	CP0696	Punakha	DFO, Wangdue
CP1851	Trashigang	DFO, Trashigang	CP0701	Punakha	DFO, Wangdue
CP1926	Trashigang	DFO, Trashigang	CP0706	Wangdue	DFO, Wangdue
CP1656	Tsirang	DFO, Tsirang	CP0761	Punakha	DFO, Wangdue
CP1736	Tsirang	DFO, Tsirang	CP0766	Wangdue	DFO, Wangdue
CP1811	Tsirang	DFO, Tsirang	CP0821	Punakha	DFO, Wangdue
CP1891	Tsirang	DFO, Tsirang	CP0826	Wangdue	DFO, Wangdue
CP1971	Tsirang	DFO, Tsirang	CP0831	Wangdue	DFO, Wangdue
CP2051	Tsirang	DFO, Tsirang	CP0886	Punakha	DFO, Wangdue
CP2126	Tsirang	DFO, Tsirang	CP0891	Wangdue	DFO, Wangdue
CP2201	Tsirang	DFO, Tsirang	CP0896	Wangdue	DFO, Wangdue
CP2276	Tsirang	DFO, Tsirang	CP0951	Punakha	DFO, Wangdue
CP0581	Wangdue	DFO, Wangdue	CP0956	Wangdue	DFO, Wangdue
CP0636	Punakha	DFO, Wangdue	CP0961	Wangdue	DFO, Wangdue
CP1021	Wangdue	DFO, Wangdue	CP1326	Wangdue	DFO, Wangdue
CP1026	Wangdue	DFO, Wangdue	CP1331	Wangdue	DFO, Wangdue

CP1096	Wangdue	DFO, Wangdue	CP1406	Wangdue	DFO, Wangdue
CP1101	Wangdue	DFO, Wangdue	CP1411	Wangdue	DFO, Wangdue
CP1106	Wangdue	DFO, Wangdue	CP1491	Wangdue	DFO, Wangdue
CP1171	Wangdue	DFO, Wangdue	CP1571	Wangdue	DFO, Wangdue
CP1176	Wangdue	DFO, Wangdue	CP1651	Wangdue	DFO, Wangdue
CP1246	Wangdue	DFO, Wangdue	CP0051	Gasa	WCNP
CP1251	Wangdue	DFO, Wangdue			



ROYAL GOVERNMENT OF BHUTAN  
MINISTRY OF AGRICULTURE AND FORESTS  
DEPARTMENT OF FORESTS AND PARK SERVICES  
FOREST RESOURCES MANAGEMENT DIVISION  
THIMPHU: BHUTAN



*"Sustaining Forest Resources for Present and Future Generations"*

FRMD/FRIS/1(b)/2019-20/361

September 16, 2019

### NOTESHEET

**Sub: Seeking approval for Implementation Modality for National Forest Inventory (NFI)**

One of the key activities of the Forest Resources Management Division (FRMD) and also for the Department of Forests and Park Services (DoFPS) in the 12<sup>th</sup> Five Year Plan (12FYP) will be conducting second National Forest Inventory (NFI) of Bhutan. Besides, the constitutional mandate of monitoring 60% forest cover, the National Forest Policy, 2011 also requires carrying out periodic NFIs to enhance knowledge on overall forest resources, biodiversity and ecosystem health across the country and to guide forest classifications, functional mapping, strategic investments and decisions.

Unlike the first NFI, this NFI will be implemented with decentralized framework wherein the field offices (Parks and Divisions) will be engaged as field implementers and the FRMD will provide technical and overall guidance to ensure timely and successful implementation. This mode of implementation is aimed at integrating NFI into the regular forestry activities and programs of the field offices, which in long run will be enhance the scientific and technical capacity of the field offices, besides ensuring reduction in financial and management costs of conducting periodic NFIs in future.

Therefore, in order to facilitate smooth implementation of NFI through a new mode of implementation, the NFI Implementation Modality has been developed by FRMD which was presented and agreed by the Chief Forestry Officers of field offices through a consultation meeting held from 7<sup>th</sup> - 9<sup>th</sup> March, 2019. The modality identifies roles and responsibilities of the Department, FRMD, Field Offices besides the individuals who will be part of conducting second NFI. It provides guidance on roles and duties of National Coordinators at FRMD, Field Chiefs as Principal Coordinators in the respective field offices, Data Managers, NFI Crew Leaders and Members.

The NFI entails collecting data and samples from 2424 cluster plots systematically laid at 4 km by 4 km spacing throughout Bhutan. Some of the plots fall near road networks while majority of the plots have to be reached on foot. It takes days to reach the NFI plots and therefore our NFI crews has to spend months in the forest navigating through the treacherous terrain and survive under difficult conditions. Given the nature of work in carrying out the national forest inventory which requires our field crews to visit extremely remote wilderness areas where no-human may have visited before, our crews are often in life-risking situations with no immediate access to medical facilities or communication facilities to assuage any emergency circumstances.

Hence, it is very important that the NFI crews and the Quality Assurance and Quality Control (QAQC) team are well equipped to walk, work and survive in the forests with rugged terrain and harsh conditions. As we did during the past NFI, the NFI crews including Quality Assurance and Quality Control (QAQC) teams to be formed at FRMD will be provided with basic necessary gears and equipment. The list of basic gears and equipment to be provided are reflected herein the modality.

Forest Resources Management Division. PO Box # 751 Phone: +975-02-327723, 324653 Fax: +975-02-322560

དབལ་ལྡན་འབྲུག་གཞུང་། མོ་ནལ་དང་ནགས་ཚལ་ལྷན་ལག་། ནགས་ཚལ་དང་གླིང་ཀ་ཁབས་ཉལ་ལས་ཁུངས་། ནགས་ཚལ་འཛོམ་བསྐྱེད་

འཛིན་སྲིད་ལྗོངས་ཚན



ROYAL GOVERNMENT OF BHUTAN  
MINISTRY OF AGRICULTURE AND FORESTS  
DEPARTMENT OF FORESTS AND PARK SERVICES  
FOREST RESOURCES MANAGEMENT DIVISION  
THIMPHU: BHUTAN



*"Sustaining Forest Resources for Present and Future Generations"*

The modality provides information on number of NFI plots, the NFI crews to be formed and general work plan besides the entitlements of NFI crews.

Therefore, the Department would like to seek the kind approval of the Ministry for Implementation Modality which is envisaged to facilitate smooth and successful implementation of NFI.

Submitted for kind approval

Dorji Wangdi  
**Oftg. Chief Forestry Officer**  
Forest Resources Management Division

Recommended for approval

Lobzang Dorji  
**Director**  
Department of Forests and Park Services

APPROVED

*Approved as long as the activity is budgeted.*

SECRETARY  
Ministry of Agriculture and Forests

*27/9*

Administrative Jurisdiction of Field Offices

