



འབྲུག་རྒྱལ་ཡུལ་གཞུང་།  
ROYAL GOVERNMENT OF BHUTAN  
MINISTRY OF AGRICULTURE AND FORESTS  
DEPARTMENT OF FORESTS AND PARK SERVICES  
THIMPHU: BHUTAN



# ANNUAL FORESTRY STATISTICS, 2021



འཕགས་ལྷན་འབྲུག་གཞུང་གི་ནམ་དང་ནམས་ཚལ་རྒྱུ་ལམ་རྒྱུ་གསལ་ཚལ་དང་རྗེས་གཞི་དཀར་མཁོ་རྟོག་པམ་རྟོག་པམ་ཁུངས།

**ROYAL GOVERNMENT OF BHUTAN  
MINISTRY OF AGRICULTURE AND FORESTS  
DEPARTMENT OF FORESTS AND PARK SERVICES  
THIMPHU: BHUTAN**



**FOREWORD**

Forests resources are fundamental natural capital that are critical for sustenance of the human population. Forests provides a range of ecosystem services are under immense pressure from the effects of climate change and anthropogenic activities. Thus, sustainable conservation and management of forests resources have become a top priority globally. Even in Bhutan, sustainable management of forests is very critical for the sustenance of livelihood as well as for the socioeconomic development process. Thus, data and information on these natural resources are very critical for policy makers, researchers and decision makers to make informed decisions and devise efficient strategies and interventions to enhance sustainable management of natural resources. The Department Forests and Park Services (DoFPS) in collaboration with RNR Statistics Division is pleased to publish Annual Forestry Statistics, 2021. The information contained herein are those compiled and analyzed from the data accrued for the year 2021, through Forest Information Reporting and Monitoring System (FIRMS), a centralized data sharing system updated on real-time basis from the field offices. This report provides the most recent and reliable data and information on forest management, resource utilization, various services and the challenges faced by the Department. This publication also provides an account of Human Resources based on gender. I am optimistic that this information booklet will be useful to decision makers, researchers, academicians, conservationist, planners and all other stakeholders.

With the concerted efforts of everyone we have been able to achieve many things. Therefore, I would like to take the opportunity to sincerely acknowledge the collective efforts put in by the all the colleagues in the field as well as functional offices towards fulfilling the mandates and goals of Department. Further, I congratulate Forest Resources Management Division (FRMD) for taking lead in publishing this booklet for the benefit of all stakeholders.

Tashi Delek!

(Lobzang Dorji)  
**DIRECTOR**



འཕམ་ལྷན་ཡུལ་གཞུང་གི་ནམ་དང་ནམས་ཚལ་རྒྱུ་ལམ་རྒྱུ་ཚལ་དང་རྒྱུང་ཀའབམ་རྟོག་ལམ་ཁུངས།

**ROYAL GOVERNMENT OF BHUTAN**  
**MINISTRY OF AGRICULTURE AND FORESTS**  
**DEPARTMENT OF FORESTS AND PARK SERVICES**  
**THIMPHU: BHUTAN**



**Published by :**

Forest Resource Management Division, Department of Forest and Park Services, Ministry of Agriculture and Foests, Thimphu, Bhutan June 2021

# Table of Contents

Introduction .....	6
Key Facts.....	8
1. Organizational Structure .....	9
2. Forest Cover .....	14
3. Sustainable Forest Management.....	14
3.1. Protected Area Management .....	14
3.2. Forest Management Unit.....	17
3.3. Local Forest Management Area .....	19
3.4. Community Forestry .....	24
4. Resource Utilization .....	25
4.1. Allotment of Timber by Department .....	25
4.2. Production of Timber from FMU and outside FMU .....	28
4.3. Non-wood Forest Products.....	29
5. Forestry Services .....	32
5.1. Forestry Clearance.....	32
5.2. Plantation.....	34
5.3. Revenue from Fees .....	35
5.4. Human Wildlife Conflict .....	35
6. Forest Offence.....	36
7. Forest Fire .....	37
8. Wood Based Industries .....	39
9. Human Resource.....	40

Figure 1: Organogram of Department of Forests and Park Services

(DoFPS) ----- 9

Table 1: Field offices under Department of Forests and Park Services (DoFPS)	10
Table 2: Dzongkhag wise forest cover	14
Table 3: Protected Area Network	14
Table 4: List of FMUs and Annual Allowable Cut (AAC)	17
Table 5 : List of existing Local Forest Management Areas	19
Table 6: Dzongkhag Wise Distribution of Community Forest in Bhutan	24
Table 7: Community Forest Established in 2021	24
Table 8: Timber Allotted for Different Purposes	25
Table 9: Timber Allotted by DoFPS in 2021	25
Table 10: Firewood allotted by DoFPS in 2021	26
Table 11: Timber allotted for Dzong/Lhaxhang construction or Renovation in 2021	27
Table 12: Production of Timber from FMUs and adhoc areas by NRDCL	28
Table 13: Timber production from Adhoc Areas in 2021	28
Table 14: NWFPs Extracted and Royalty Realized in 2021	29
Table 15: Forestry Clearance (new or renewal) issued for the year 2021	32
Table 16 New Plantation Creation inside Community Forest for the year 2021	34
Table 17: Plantation Creation and Maintenance inside FMU	34
Table 18: Revenue collected through different source for the year 2021	35
Table 19: Crop Damages	35
Table 20: Livestock Depredation	35
Table 21: Types of Forest Offence reported in 2021	36
Table 22: Forest fire incidences reported for office wise in 2021	37
Table 23: Forest fire incidences reported for Dzongkhag wise in 2021	38
Table 24: Number of Wood-based Industries in Bhutan	39
Table 25: Gender Wise Distribution of Staffs	40

འཕེལ་ཐོན་ལྷན་ཁག་གི་འོག་ཁོལ་དང་འགའ་ཚུལ་རྒྱུ་འབྲུག་གཞུང་གི་དང་ཕྱི་དཀར་ལྷན་ཁག་གི་ཞུལ་འདེད་ལྟུང་ལ།

**ROYAL GOVERNMENT OF BHUTAN**  
**MINISTRY OF AGRICULTURE AND FORESTS**  
**DEPARTMENT OF FORESTS AND PARK SERVICES**  
**THIMPHU: BHUTAN**



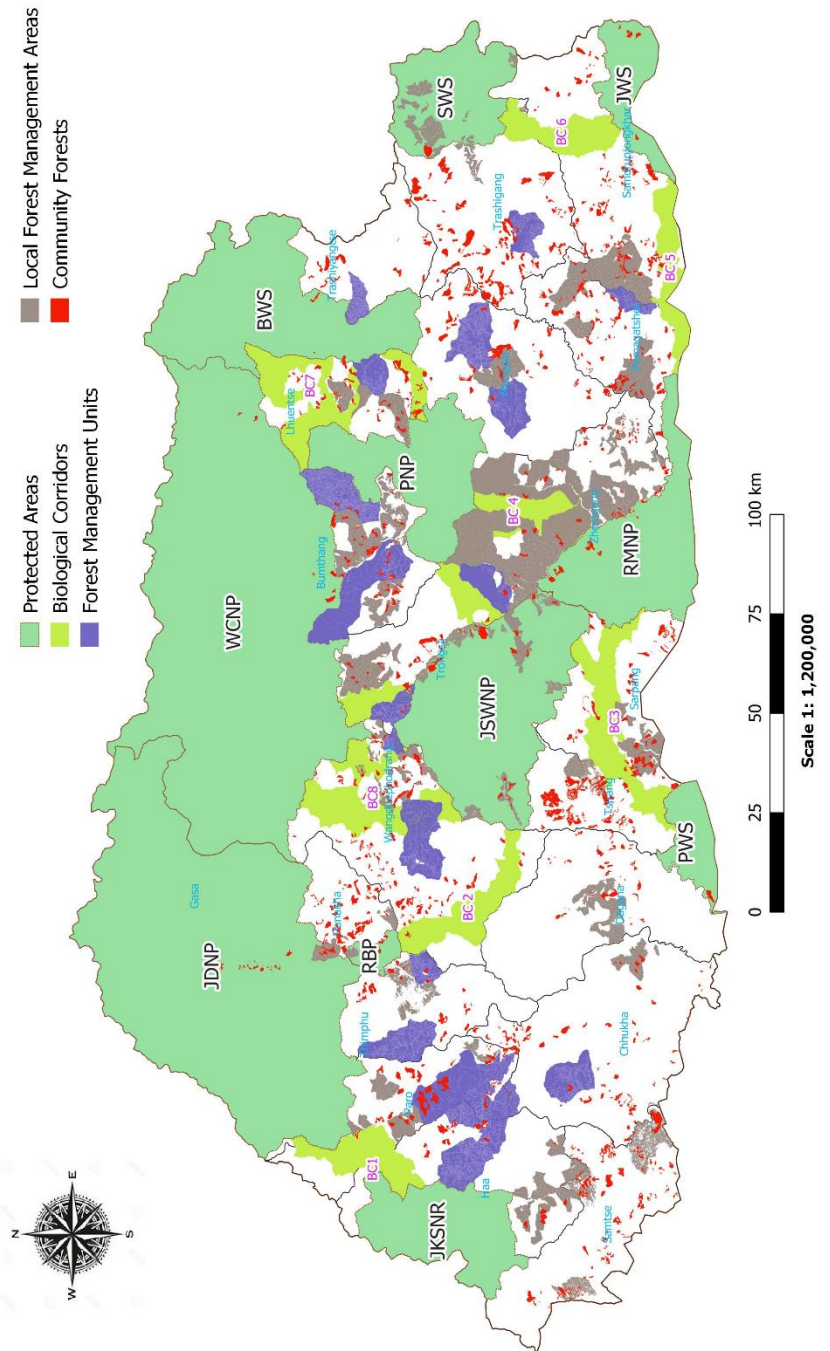
## Introduction

Annual Forestry Statistics (AFS) 2021 provides an account of the administrative functions, services and various program implemented by the Department of Forests and Park Services (DoFPS). The information outlined in this report are based on the data collected from the Forest Information Reporting and Monitoring System (FIRMS) database, which is an online repository of information collected from 14 Divisional Forest Offices and 10 Park Offices. Additional information was sourced from Functional Divisions for further analysis and validation.

AFS 2021 presents critical information on forest types and cover, total biomass and carbon stock, in addition to total areas under different forest management regimes and the resources utilization scenarios. It contains status of Protected Areas (PAs), Forest Management Units (FMUs), Local Forest Management Units (LFMPs), Community Forests (CFs) and Non-Wood Forest Management (NWFP).In addition, information on plantations is also reflected.

Forest resource allocation is one of the critical services, the majority of which is the allotment of timbers for various construction purposes. It presents the volume of timber allotted in last one year both through Natural Resources Development Corporation Limited (NRDCL) and the Department. The revenue generated from allocation of resources and services provided by the Department is also presented in the booklet. It also captures information on Wood-based Industries and challenges faced in managing resources of Bhutan.

# Area under Sustainable Forest Management

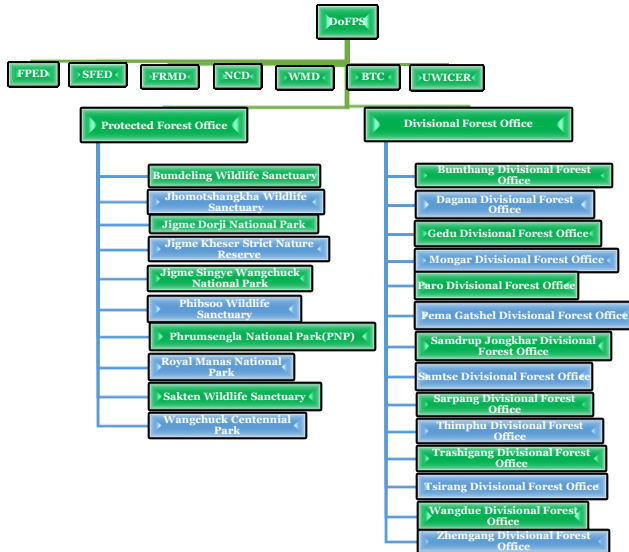


## Key Facts

Forest Cover		Protected Area Network	
<b>Total Forest Area (Ha)</b>	2717161.64	Protected Area (%)	43.48
<b>Percent (%)</b>	71	Biological Corridors (%)	7.73
<b>Basal area per hectare (m<sup>2</sup>/ha)</b>	40	Royal Botanical Park (RBP) (%)	0.24
<b>Growing Stock per hectare ) (m<sup>3</sup>)</b>	346	Protected Area Network (%) *	51.44
<b>Biomass Stock per hectare</b>	269.32	National Parks (No.)	5
<b>Carbon per hectare (forest)</b>	127.05	Wildlife Sanctuaries (No.)	4
<b>Soil Carbon per hectare</b>	64.07	Strict Nature Reserve (No.)	1
<b>Forest Carbon Stock</b>	645.12	Biological Corridors (No.)	8
<b>Total CF(No.)</b>	839	Forest Management Units (No.)	21
<b>Household involved in CF(No.)</b>	34124	Forest Management Units Area (Ha)	195790.6
<b>Total Area of CF(Ha.)</b>	105099.27	Total Ramsar sites (No.)	3
<b>Local Forest Management Area (Nos)</b>	73	Total Ramsar site Area (Ha)	1231.82
<b>Local Forest Management Area (Ha)</b>	294232.74	Payment for Environment Services (No.)	4
<b>Total watershed (No.)</b>	186	Payment for Environment Services Area (Ha.)	2973
<b>Wood-based industries (No.)</b>	615		
<b>Functional &amp; Field Office (No.)</b>			
<b>Functional Division</b>			7
<b>Divisional Forest Office</b>	14	Park/ Strict Reserve/ Wildlife Sanctuaries	10
<b>Range Office</b>	41	Range Office	32
<b>Beat Office</b>	75	Guard Post	11
<b>* Protected Area Network (%) is the total of Protected Areas (%), Biological Corridors (%) and Royal Botanical Park (%)</b>			



# 1. Organizational Structure



**Figure 1: Organogram of Department of Forests and Park Services (DoFPS)**

Department of Forests and Park Services (DoFPS)

Bhutan Tiger Center (BTC)

Forest Protection and Enforcement Division (FPED)

Social Forestry and Extension Division (SFED)

Forest Resources and Management Division (FRMD)

Nature Conservation Division (NCD)

Ugyen Wangchuck Institute for Conservation and Environmental Research (UWICER)

Watershed Management Division (WMD)

Table 1: Field offices under Department of Forests and Park Services (DoFPS)

Sl.No.	Office	Dzongkhag	Range Office	Forest Management Unit (FMU)	Beat Office/Guardpost	
1	Divisional Forest Office, Bumthang	Bumthang	<i>Bumthang</i>	<i>Rodungla</i>	<i>Tang</i>	
						<i>Drakteng</i>
		Trongsa	<i>Chumey</i>	<i>Karshong</i>	<i>Tashiling</i>	
			<i>Trongsa</i>	<i>Dawathan g</i> <i>Chendebji</i>	<i>Langthel</i> <i>Nubi</i>	
2	Divisional Forest Office, Dagana	Dagana	<i>Drujeygang</i>			
			<i>Dagapela</i>			
			<i>Lhamoizingkha</i>			
			<i>Dagana</i>			
3	Divisional Forest Office, Gedu	Chhukha	<i>Phuentsholing</i>	<i>Metabchu</i>	<i>Pasakha</i>	
			<i>Tsimasham</i>		<i>Chapcha</i>	
					<i>Wangkha</i>	
			<i>Gedu</i>		<i>Darla</i>	
					<i>Kungkha</i>	
4	Divisional Forest Office, Mongar	Mongar	<i>Mongar</i>	<i>Korila</i>	<i>Chaskhar</i>	
					<i>Drametse</i>	
			Lhuentse	<i>Gyelpozhing</i>	<i>Lingmethang</i>	<i>Salaphu</i>
						<i>Kengkhar</i>
		<i>Lhuentse</i>		<i>Rongmac hu</i>	<i>Nagor</i>	
					<i>Yadi</i>	
					<i>Autsho</i>	
			<i>Tangmochu</i>			
5	Divisional Forest Office, Paro	Paro	<i>Paro</i>	<i>Zoglela</i>	<i>Jitsephu</i>	
				<i>Bitekha</i>		
				<i>Haa East</i>		
		Haa	<i>Haa</i>	<i>Selela</i>		
				<i>Longchu</i>		

6	Divisional Forest Office, Pema Gatshel	Pema Gatshel	<i>Pema Gatshel</i>	<i>Khengzor</i>	<i>Dungmin</i>
			<i>Nganglam</i>		<i>Nanong</i>
7	Divisional Forest Office, Samdrup Jongkhar	Samdrup Jongkhar	<i>Samdrup Jongkhar</i>		<i>Dewathang</i>
					<i>Orong</i>
					<i>Gomdar</i>
8	Divisional Forest Office, Samtse	Samtse	<i>Tashicholing</i>		<i>Tendruk</i>
			<i>Norbugang</i>		<i>Sangacholing</i>
			<i>Samtse</i>		<i>Yoeseltse</i>
			<i>Dophuchen</i>		<i>Phuntshopelri</i>
					<i>Tading</i>
9	Divisional Forest Office, Sarpang	Sarpang	<i>Sarpang</i>		<i>Chhudzom</i>
			<i>Gelephu</i>		<i>Dekiling</i>
					<i>Jigmecholing</i>
10	Divisional Forest Office, Thimphu	Thimphu	<i>Thimphu</i>	<i>Gidakom</i>	<i>Hongtsho</i>
			<i>Khasadrapchu</i>		<i>Simtokha</i>
				<i>Chamgan g</i>	<i>Dechencholing</i> <i>Genekhha</i>
11	Divisional Forest Office, Trashigang	Trashigang	<i>Radhi</i>	<i>Khaling Karungla</i>	<i>Bidung,</i>
					<i>Shongphu</i>
					<i>Phongmey</i>
			<i>Warmrong</i>		<i>Thrimshing</i>
					<i>Lumang</i>
			<i>Khaling</i>		
			<i>Kangpara</i>		
		<i>Trashigang</i>	<i>Samkhar</i>		
			<i>Udzorong</i>		
		Trashiyangtse	<i>Yangner</i>		
	<i>Kanglung</i>				
	<i>Bartsham</i>				

			<i>Duksum</i>	<i>Dongdeyehu</i>	<i>Jamkhar</i>	
					<i>Tongzhang</i>	
					<i>Ramjar</i>	
					<i>Yallang</i>	
			<i>Yangtse</i>		<i>Khamdang</i>	
					<i>Toetsho</i>	
<b>12</b>	Divisional Forest Office, Tsirang	Tsirang	<i>Tsirang</i>		<i>Sergithang</i>	
			<i>Tsirangtoe</i>			
			<i>Mendrelgang</i>			
<b>13</b>	Divisional Forest Office, Wangdue	Wangdue	<i>Wangdue</i>	<i>Kotokha</i>	<i>Chuzomsa</i>	
					<i>Gogona</i>	<i>Gasello</i>
						<i>Kamichu</i>
		Punakha	<i>Lobesa</i>		<i>Toebisa</i>	
					<i>Punakha</i>	<i>Talo</i>
						<i>Guma</i>
						<i>Samdingkha</i>
						<i>Kabisa</i>
						<i>Sheгна</i>
						<i>Dzomi</i>
<i>Tshochasa</i>						
	<i>Nobding</i>		<i>Phobjikha</i>			
<b>14</b>	Divisional Forest Office, Zhemgang	Zhemgang	<i>Zhemgang</i>	<i>Wangdigan</i>	<i>Buli</i>	
					<i>Tali</i>	
			<i>Khomshar</i>		<i>Mangdechu</i>	
					<i>Digala</i>	
					<i>Shingkhar</i>	
			<i>Pangbang</i>		<i>Goshing</i>	
	<i>Bjokha</i>					
<b>15</b>	Bumdeling Wildlife Sanctuary	Trashiyangtse	<i>Dungzam</i>		<i>Shingphel &amp; Womanang</i>	
		Mongar	<i>Serzhong</i>		<i>Aja</i>	

		Lhuentse	<i>Khomo</i>		<i>Singyedzong</i>
<b>16</b>	Jigme Dorji National Park	Thimphu	<i>Soe</i>		
			<i>Lingzhi</i>		
			<i>Gasa</i>		
		Gasa	<i>Laya</i>		
			<i>Lunana</i>		
			<i>Ruenchena</i>		
<b>17</b>	Jigme Khesar Strict Nature Reserve	Haa	<i>Sombay</i>		
			<i>Gakiling</i>		
			<i>Bjee</i>		
<b>18</b>	Jigme Singye Wangchuck National Park	Trongsa	<i>Langthel</i>		<i>Chendejbi</i>
			<i>Nabji</i>		<i>Adha</i>
		Zhemgang	<i>Tingtibi</i>		
		Wangduephod rang	<i>Taksha</i>		
<b>19</b>	Jomotsangkha Wildlife Sanctuary	Samdrup Jongkhar	<i>Samdrupcholing</i>		<i>Menjiuwong</i>
			<i>Jomotshangkha</i>		
<b>20</b>	Phibsoo Wildlife Sanctuary	Sarpang	<i>Phibsoo</i>		
			<i>Nichula</i>		
<b>21</b>	Phrumsengla National Park	Bumthang	<i>Ura</i>		<i>Sengor</i>
		Mongar	<i>Lingmethang</i>		<i>Tsamang</i>
		Lhuentse	<i>Phawan</i>		<i>Zangkhar</i>
<b>22</b>	Royal Manas National Park	Sarpang	<i>Manas</i>		
			<i>Gongphu</i>		
			<i>Umling</i>		
<b>23</b>	Sakteng Wildlife Sanctuary	Trsahigang	<i>Merak</i>		<i>Thraktri</i>
			<i>Sakteng</i>		
			<i>Joenkhar</i>		
<b>24</b>	Wangchuck Centennial National Park	Bumthang	<i>Choekhar</i>		<i>Tang</i>
		Lhuentse	<i>Dungkar</i>		
		Wangduephod rang	<i>Sephu</i>		

## 2. Forest Cover

Table 2: Dzongkhag wise forest cover

Sl.No.	Dzongkhag	Forest Cover (%)	Forest Area (Ha)
1	Bumthang	0.52	139356.70
2	Chhukha	0.89	166151.10
3	Dagana	0.89	152086.10
4	Gasa	0.20	60853.00
5	Haa	0.67	125772.40
6	Lhuentse	0.65	183421.00
7	Mongar	0.91	175886.90
8	Paro	0.52	66282.70
9	Pema Gatshel	0.91	91926.70
10	Punakha	0.84	91894.90
11	Samdrup Jongkhar	0.91	168689.70
12	Samtse	0.81	105203.20
13	Sarpang	0.90	146852.30
14	Thimphu	0.40	71213.80
15	Trashigang	0.79	172757.70
16	Trashigang	0.70	100400.00
17	Trongsa	0.86	153725.10
18	Tsirang	0.88	55265.10
19	Wangdue Phordang	0.66	264061.90
20	Zhemgang	0.94	225361.50

## 3. Sustainable Forest Management

### 3.1. Protected Area Management

Table 3: Protected Area Network

Sl.No.	Protected Area Network	Notificati on year	Establish ment year	Dzongkhag	Area (km sq)
1	Bumdeling Wildlife	1993	1998	Lhuentse	1534.24
				Mongar	

	Sanctuary (BWS)			Trashiyangtse	
<b>2</b>	Jigme Dorji National Park (JDNP)	1993	1995	Gasa	4374.06
				Paro	
				Punakha	
				Thimphu	
<b>3</b>	Jigme Khesar Strict Nature Reserve (JKSNR)	1993	2010	Haa	784.22
				Samtse	
<b>4</b>	Jigme Singye Wangchuck National Park (JSWNP)	1993	1995	Sarpang	1730.06
				Trongsa	
				Tsirang	
				Wangdue Phodrang	
				Zhemgang	
<b>5</b>	Jomotsangkha Wildlife Sanctuary (JWS)	1993	1993	Samdrup Jongkhar	362.49
<b>6</b>	Phrumsengla National Park (PNP)	1993	2000	Bumthang	906.65
				Lhuentse	
				Mongar	
				Zhemgang	
<b>7</b>	Phipsoo Wildlife Sanctuary (PWS)	1974	1993	Sarpang	286.83
				Dagana	
<b>8</b>	Royal Manas National Park (RMNP)	1993	1996	Pema Gatshe	1057.40
				Sarpang	
				Zhemgang	
<b>9</b>	Sakteng Wildlife Sanctuary (SWS)	1993	2003	Trashigang	742.46
<b>10</b>	Wangchuck Centennial National Park (WCNP)	2008	2008	Bumthang	4914.65
				Lhuentse	
				Wangdue Phodrang	
				Gasa	
				Trongsa	
<b>11</b>	Royal Botanical Park (RBP)	2004		Punakha	91.20
				Thimphu	
<b>12</b>	JDNP-JKSNR Biological Corridor (BC1)	1999	2007	Haa	255.55
				Paro	
<b>13</b>	RBP-JSWNP Biological Corridor (BC 2)	1999	2007	Wangdue Phodrang	291.76
<b>14</b>	JSWNP-PWS-RMNP Biological Corridor (BC 3)	1999	2007	Sarpang	407.70
				Tsirang	

15	JSWNP-PNP-RMNP Biological Corridor(BC 4)	1999	2007	Trongsa	594.65
				Zhemgang	
16	JWS-RMNP Biological Corridor (BC 5)	1999	2007	Pema Gatshel	205.84
				Samdrup Jongkhar	
17	JWS-SWS Biological Corridor (BC 6)	1999	2007	Samdrup Jongkhar	232.77
				Trashigang	
18	BWS-PNP-WCNP Biological Corridor (BC 7)	1999	2007	Lhuentse	419.66
				Mongar	
19	JSWNP-WCNP Biological Corridor (BC 8)	1999	2007	Trongsa	558.60
				Wangdue Phodrang	
<b>Total</b>					19750.79



## 3.2. Forest Management Unit

Table 4: List of FMUs and Annual Allowable Cut (AAC)

Sl.N o.	Forest Management Unit (FMU)	Dzongkhag	Establishment year	Plan Period	Total FMU area (Ha)	Forested area (Ha)	Annual Allowable Cut (AAC) - m <sup>3</sup>		
							Commercial	Rural	Total
1	Dawathang	Bumthang	2000	01/01/2021 - 31/12/2030	15173.80	13,308.61	6,900.00	4,000.00	10900.00
2	Rudongla		2002	01/01/2013-31/12/2023	14686.58	12368.91	12000.00	2999.00	14999.00
3	Karshong		1994	01/01/2020 - 31/12/2029	6008.54	5579.39	6200.00	1500.00	7700.00
4	Metapchhu	Chukha	2007	01/01/2018 - 31/12/2027	10676.53	10099.00	4400.00	630.00	5030.00
5	Haa East	Haa	1987	01/02/2016-31/01/2026	6580.99	5690.50	0.00	500.00	500.00
6	Lon Chhu		2010	01/01/2020 -31/12/2029	12664.49	8846.00	5300.00	1000.00	6300.00
7	Sele La		1997	1/1/2021-31/12/2030	9155.72	8497.65	6790.00	2440.00	9230.00
8	Korila	Mongar	1993	01/11/2016-31/10/2026	13137.00	6922.00	1100.00	2700.00	3800.00
9	Lingmithang		1997	01/07/2019-30/06/2029	10490.00	10125.00	8900.00	500.00	9400.00
10	Paro-Zonglela	Paro	1992	01/01/2012-31/12/2021	16155.81	12880.68	6366.00	3000.00	9366.00
11	Bitekha		2006	01/08/2016-31/07/2026	7260.10	6199.00	3600.00	900.00	4500.00
12	Chamgang-Helela	Thimphu	1993	01/08/2017-31/07/2027	4508.78	4320.87	0.00	1800.00	1800.00
13	Gidakom		1977	01/04/2012-31/03/2022	13100.00	9105.00	3670.00	2000.00	5670.00
14	Dongdechhu	Trashi yangtse	2001	01/04/2014-31/03/2024	4856.00	3172.00	3965.00	1249.83	5214.83

15	Chendebji	Trongsa	1996	01/01/2018 - 31/12/2027	7852.98	6912.12	4700.00	2000.00	6700.00
16	Khotokha	Wangdue	1984	01/01/2022 - 31/12/2029	9033.87	8428.63	7500.00	1900.00	9400.00
17	Gogona		2005	01/06/2015 - 31/05/2025	8080.60	4490.00	5161.00	1167.00	6328.00
18	Wangdigang	Zhemgang	1992	01/01/2017- 31/12/2026	8759.00	7511.25	nil	2100.00	2100.00
19	Rongmanchu	Lhuntse	2007	01/01/2018 - 31/12/2027	6403.13	5713.00	2700.00	500.00	3200.00
20	Khaling Kharungla	Trashigang	1996	01/01/2020 - 31/12/2029	7110.30	5553.68	900.00	400.00	1300.00
21	Khengzore	Pema Gatshel	2019	01/01/2019- 31/12/2028	4096.35	4069.15	3700.00	400.00	4100.00
<b>Total</b>					195790.57	159792.44	93852.00	33685.83	127537.83

### 3.3. Local Forest Management Area

Table 5 : List of existing Local Forest Management Areas

Sl.No.	Name of Local Forest Management Area Plan	Gewog	Dzongkha g	Period	Area covered by Plan (Ha)	AAC (m <sup>3</sup> /yr)
1	Management plan for Areas Outside FMU System Shari Geog	Shari	Paro	01/07/2012 to 30/06/2021	1600.00	946.00
2	Management plan for Areas Outside FMU System Barp Geog	Barp	Punakha	01/07/2012 to 30/06/2021	2300.00	1442.00
3	Management plan for Areas Outside FMU System Thangrong Geog	Thangrong	Mongar	01/07/2012 to 30/06/2021	1421.00	704.00
4	Management plan for Areas Outside FMU System Tsenkhar Geog	Tsenkhar	Lhuentse	01/07/2012 to 30/06/2021	na	na
5	Management plan for Areas Outside FMU System Nangkor Geog	Nangkor	Zhemgang	July 2012 to 30th June 2022	24334.00	19938.00
6	Management plan for Areas Outside FMU System Shermung Geog	Mongar (BWS)	Mongar	01/07/2012 to 30/06/2022	2100.10	1832.00
7	Management plan for Areas Outside FMU System Bumdeling Geog	Bumdeling	Trashig Yangtse	01/07/2012 to 31/06/2022	na	na
8	Management plan for Areas Outside FMU System Toeb Geog	Toeb	Punakha	01/07/2012 to 30/06/2022	2562.00	4492.00
9	Management plan for Areas Outside FMU System Dogar Geog	Dogar	Paro	01/07/2014 to 30/06/2024	1263.00	591.00
10	Management plan for Areas Outside FMU System Shaba Geog	Shaba	Paro	01/07/2014 to 30/06/2024	769.00	713.00
11	Management plan for Areas Outside FMU System Bjee Geog	Bjee	Haa	01/07/2014 to 30/06/2024	1732.00	723.00
12	Management plan for Areas Outside FMU System Katsho Geog	Katsho	Haa	01/07/2014 to 30/06/2024	712.00	837.00
13	Management plan for Areas Outside FMU System Esue Geog	Esue	Haa	01/07/2014 to 30/06/2024	339.00	383.00
14	Management plan for Areas Outside FMU System Sama Geog	Sama	Haa	01/07/2014 to 30/06/2024	325.00	343.00
15	Management plan for Areas Outside FMU System Daga Geog	Daga	Wangdue Phodrang	01/04/2016 to 31/03/2026	21043.90	29403.00

<b>16</b>	Management plan for Areas Outside FMU System Laja Geog	Laja	Dagana	01/07/2016 to 30/06/2026	1000.00	371.00
<b>17</b>	Management plan for Areas Outside FMU System Khebesa Geog	Khebesa	Dagana	01/07/2016 to 30/06/2026	1000.00	320.00
<b>18</b>	Management plan for Areas Outside FMU System	Shingkar	Zhemgang	01/07/2015 to 30/06/2025	2956.00	1416.00
<b>19</b>	Management plan for Areas Outside FMU System	Trong	Zhemgang	01/07/2016 to 30/06/2026	3386.00	1095.00
<b>20</b>	Management plan for Areas Outside FMU System Kikhorthang Geog	Khikhorthang	Tsirang	01/07/2017 to 30/06/2027	553.20	123.00
<b>21</b>	Management plan for Areas Outside FMU System Phobji Geog	Phobji	Wangdue Phodrang	01/11/2017 to 30/11/2027	3250.40	8247.00
<b>22</b>	Management plan for Areas Outside FMU System Samkhar Geog	Samkhar	Trashigang	01/01/2018 to 31/12/2027	5206.50	3140.00
<b>23</b>	Management plan for Areas Outside FMU System Bardo Geog	Bardo	Zhemgang	01/01/2018 to 31/12/2027	11793.00	17737.00
<b>24</b>	Management plan for Areas Outside FMU System Tang Geog	Tang	Bumthang	01/07/2018 to 31/06/2028	10008.00	5205.00
<b>25</b>	Management plan for Areas Outside FMU System Chumey Geog	Chumey	Bumthang	01/07/2018 to 31/06/2028	5228.00	15357.00
<b>26</b>	Management plan for Areas Outside FMU System Tsento Geog	Tsento	Paro	01/07/2018 to 31/06/2028	1952.00	843.00
<b>27</b>	Management plan for Areas Outside FMU System Lamgong Geog	Lamgong	Paro	01/07/2018 to 31/06/2028	1309.00	1073.00
<b>28</b>	Management plan for Areas Outside FMU System Phuntenchu Geog	Phuntenchu	Tsirang	01/07/2018 to 31/06/2028	2155.00	2569.00
<b>29</b>	Management plan for Areas Outside FMU System Goshing Geog	Goshing	Zhemgang	01/07/2019 to 31/12/2028	2179.00	3210.00
<b>30</b>	Management plan for Areas Outside FMU System Korphu Geog	Korphu	Trongsa	01/07/2018 to 31/06/2028	3543.40	2817.00
<b>31</b>	Management plan for Areas Outside FMU System Tongmajangsa Geog	Tongmajangsa	Trashiyangtse	01/01/2019 to 31/12/2028	1387.00	1305.00
<b>32</b>	Management plan for Areas Outside FMU System Ura Geog	Ura	Bumthang	01/01/2019 to 31/12/2028	5187.00	4237.00

<b>33</b>	Management plan for Areas Outside FMU System Doteng Geog	Doteng	Paro	01/01/2019 to 31/12/2028	3240.00	973.00
<b>34</b>	Management plan for Areas Outside FMU System Nangla Geog	Nangla	Zhemgang	01/01/2019 no 31/12/2028	3862.00	5155.00
<b>35</b>	Management plan for Areas Outside FMU System Chokor Geog	Chokor	Bumthang	01/07/2019 to 31/06/2029	3450.00	6897.00
<b>36</b>	Management plan for Areas Outside FMU System Yangtse Geog	Yangtse	Trashiyangtse	01/01/2019 to 31/12/2028	8340.00	13079.00
<b>37</b>	Management plan for Areas Outside FMU System Yangneer Geog	Yangneer	Trashigang	01/01/2019 to 31/12/2028	2907.00	1470.00
<b>38</b>	Management plan for Areas Outside FMU System Yallang Geog	Yallang	Trashigang	01/07/2019 to 30/06/2029	2209.00	3892.00
<b>39</b>	Management plan for Areas Outside FMU System Bjokha Geog	Bjokha	Zhemgang	01/01/2020 to 31/12/2029	2540.00	1323.00
<b>40</b>	Management plan for Areas Outside FMU System Dekiling Geog	Dekiling	Sarpang	01/07/2019 to 30/06/2029	3767.00	1740.00
<b>41</b>	Management plan for Areas Outside FMU System Gakidling Geog	Gakidling	Sarpang	01/07/2019 to 30/06/2029	3884.00	1587.00
<b>42</b>	Management plan for Areas Outside FMU System Sompangkha Geog	Sompangkha	Sarpang	01/07/2019 to 30/06/2029	1536.00	438.00
<b>43</b>	Management plan for Areas Outside FMU System Orong Geog	Orong	Samdrup Jongkhar	01/07/2019 to 30/06/2029	8700.00	2970.00
<b>44</b>	Management plan for Areas Outside FMU System Drepong Geog	Drepong	Mongar	01/04/2019 to 31/03/2029	4181.00	1565.00
<b>45</b>	Management plan for Areas Outside FMU System Gakiling Geog	Gakiling	Haa	01/07/2019 to 30/06/2029	5442.00	1875.00
<b>46</b>	Management plan for Areas Outside FMU System Gangtey Geog	Gangtey	Wangdue Phodrang	01/07/2019 to 30/06/2029	1377.00	1749.00
<b>47</b>	Management plan for Areas Outside FMU System Kabji Geog	Kabji	Wangdue Phodrang	01/07/2019 to 30/06/2029	3219.00	2681.00
<b>48</b>	Management plan for Areas Outside FMU System Geney Geog	Geney	Thimphu	01/07/2019 to 30/06/2029	3805.00	1805.00
<b>49</b>	Management plan for Areas Outside FMU System Menbi Geog	Menbi	Lhuntse	01/04/2019 to 31/03/2029	4617.00	2363.00

<b>50</b>	Management plan for Areas Outside FMU System Mongar Geog	Mongar	Mongar	01/04/2019 to 31/03/2029	3101.00	1835.00
<b>51</b>	Management plan for Areas Outside FMU System Nubi Geog	Nubi	Trongsa	30/09/2019 to 31/08/2029	10403.00	9163.00
<b>52</b>	Management plan for Areas Outside FMU System Saleng Geog	Saleng	Mongar	01/07/2019 to 30/06/2029	2116.00	2391.00
<b>53</b>	Management plan for Areas Outside FMU System Sombgyakha Geog	Sombgyakha	Haa	01/10/2019 to 31/09/2029	4960.00	1848.00
<b>54</b>	Management plan for Areas Outside FMU System Shongphu Geog	Shongphu	Trashigang	01/07/2019 to 30/06/2029	2821.00	933.00
<b>55</b>	Management plan for Areas Outside FMU System Yurung Geog	Yurung	Pema Gatshel	01/07/2019 to 30/06/2029	2833.00	950.00
<b>56</b>	Management plan for Areas Outside FMU System Dunglagang Geog	Dunglagang	Tsirang	01/07/2019 to 30/06/2029	1645.00	762.00
<b>57</b>	Management plan for Areas Outside FMU System Wangphu Geog	Wangphu	Samdrup Jongkhar	01/07/2020 to 30/06/2030	7153.00	1873.00
<b>58</b>	Management plan for Areas Outside FMU System Geteyna Geog	Geteyna	Chukha	01/07/2021 to 30/06/2031	5089.00	1681.00
<b>59</b>	Management plan for Areas Outside FMU System Lajab Geog	Samrang	Samdrup Jongkhar	01/07/2020 to 30/06/2030	4132.00	1794.00
<b>60</b>	Management plan for Areas Outside FMU System Chudzom Geog	Chudzom	Sarpang	01/07/2020 to 30/06/2030	6208.47	1968
<b>61</b>	Management plan for Areas Outside FMU System Dechenling Geog	Dechenling	Pema Gatshel	01/07/2020 to 30/06/2030	12745.31	1114
<b>62</b>	Management plan for Areas Outside FMU System Kana Geog	Kana	Dagana	01/07/2020 to 30/06/2030	1497	575
<b>63</b>	Management plan for Areas Outside FMU System Lajab Geog	Lajab	Dagana	01.01.2021 to 31/12/2031	5597	10311
<b>64</b>	Management plan for Areas Outside FMU System Semjong Geog	Semjong	Tsirang	01/07/2020 to 30/06/2030	149.2	201
<b>65</b>	Management plan for Areas Outside FMU System Sephu Geog	Sephu	Wangdue Phodrang	01/07/2020 to 30/06/2030	1657.6	1518

<b>66</b>	Management plan for Areas Outside FMU System Sergithang Geog	Sergithang	Tsirang	01/07/2020 to 30/06/2030	5237.11	2646
<b>67</b>	Management plan for Areas Outside FMU System Thrimsing Geog	Thrimsing	Trashigang	01/07/2020 to 30/06/2030	5025	4059
<b>68</b>	Management plan for Areas Outside FMU System Tsamang Geog	Tsamang	Mongar	01/07/2020 to 30/06/2030	3928.05	2308
<b>69</b>	Management plan for Areas Outside FMU System Zobel Geog	Zobel	Pema Gatshel	01/07/2020 to 30/06/2030	5028.4	1499
<b>70</b>	Management plan for Areas Outside FMU System Chang Geog	Chang	Thimphu	01/07/2020 to 30/06/2030	7911.5	4674
<b>71</b>	Management plan for Areas Outside FMU System Nahi Geog	Nahi	Wangdue Phodrang	01/07/2021 to 30/06/2031	1727.4	2186
<b>72</b>	Management plan for Areas Outside FMU System Dangchu Geog	Dangchu	Wangdue Phodrang	01/07/2021 to 30/06/2031	1858.5	2510
<b>73</b>	Management plan for Areas Outside FMU System Nichula Geog	Nichula	Sarpang	01/07/2021 to 30/06/2031	1738.7	775
<b>Total</b>					294232.74	242548.00

### 3.4. Community Forestry

*Table 6: Dzongkhag Wise Distribution of Community Forest in Bhutan*

Sl. No.	Dzongkhag	Community Forest(No.)	Member household(No.)	Area (Ha)
1	Bumthang	39	1081	3897.04
2	Chukha	62	2030	4540.18
3	Dagana	34	1504	3354.85
4	Gasa	7	186	556.08
5	Haa	19	584	1839.73
6	Lhuntse	37	1095	3576.86
7	Mongar	38	2276	11878.53
8	Paro	30	1590	4842.92
9	Pemagatshel	58	2920	5772.52
10	Punakha	45	1512	4551.17
11	Samdrupjongkhar	50	2454	7141.80
12	Samtse	64	2609	6919.18
13	Sarpang	36	1487	4612.31
14	Thimphu	22	898	3039.07
15	Trashigang	54	3112	11177.81
16	Trashiyangtse	39	1743	5111.38
17	Trongsa	30	1009	3579.70
18	Tsirang	51	2897	9696.89
19	Wangdue Phodrang	89	2423	7010.26
20	Zhemgang	35	1351	4768.12
	<b>Total</b>	839	34761	107866.39

*Table 7: Community Forest Established in 2021*

Sl. No.	Dzongkhag	Community Forest(No.)	Member household(No.)	Area (Ha)
1	Dagana	3	123	321.68
2	Haa	2	70	339.80
3	Mongar	1	67	518.00
4	Punakha	1	34	155.89
5	Samtse	3	120	399.26
6	Trashigang	3	93	520.44
7	Trashiyangtse	3	99	575.78
8	Wangdue Phodrang	1	10	50.58
	<b>Total</b>	17	616	2881.43



## 4. Resource Utilization

### 4.1. Allotment of Timber by Department

Table 8: Timber Allotted for Different Purposes

SL no.	Purposes	Rural		Commercial**	
		Volume (m3)	Royalty (Nu.)	Volume (m3)	Royalty (Nu.)
1	Total timber allotted*	38950.30	6,30,130.15	37485.59	8,972,068.12
2	Firewood	18801.66	4,19,706.70	22397.95	4,92,907.32
<b>Total</b>		57751.96	10,49,836.85	59883.54	94,64,975.44
* Total timber allotted for various purposes including the timber allotted for Dzong/Lhakhang construction or renovation.					
** Commercial timber: Department allotment to NRDCL is not included.					

Table 9: Timber Allotted by DoFPS in 2021

SL no.	Offices	Rural		Commercial	
		Volume( m3)	Royalty (Nu.)	Volume( m3)	Royalty (Nu.)
1	Divisional Forest Office, Bumthang	2496.92	90,214.44	6724.38	1,934,363.12
2	Divisional Forest Office, Dagana	586.53	15,544.49	567.15	113,042.83
3	Divisional Forest Office, Gedu	1054.90	15,057.24	1014.24	152,204.70
4	Divisional Forest Office, Mongar	11942.12	41,935.54	3566.65	655,372.09
5	Divisional Forest Office, Paro	12252.70	185,502.11	2442.27	936,550.59
6	Divisional Forest Office, Pema Gatshel	89.74	2,360.05	2026.29	44,827.95
7	Divisional Forest Office, Samdrup Jongkhar	50.60	2,304.91	825.88	353,876.48
8	Divisional Forest Office, Samtse	435.61	8,995.96	1105.79	196,892.43
9	Divisional Forest Office, Sarpang	50.19	2,315.41	175.62	39,369.44
10	Divisional Forest Office, Thimphu	2362.05	18,360.05	1496.81	358,686.84
11	Divisional Forest Office, Trashigang	1160.39	43,240.77	121.83	16,837.08
12	Divisional Forest Office, Tsirang	3.74	1,084.00	35.56	5,251.88
13	Divisional Forest Office, Wangdue	578.45	39,295.84	2976.34	533,681.35
14	Divisional Forest Office, Zhemgang	392.26	6,194.43	299.76	50,672.30

15	Bumdeling Wildlife Sanctuary	1809.76	52,703.11	273.25	121,438.58
16	Jigme Dorji National Park	1367.54	26,845.30	9203.50	2,311,686.95
17	Jigme Khesar Strict Nature Reserve	185.70	2,860.00	175.88	19,042.04
18	Jigme Singye Wangchuck National Park	293.49	10,844.70	87.39	26,032.27
19	Jomotsangkha Wildlife Sanctuary	12.79	140.00	304.86	79,723.53
20	Phibsoo Wildlife Sanctuary	72.64	3,240.00	0.00	0.00
21	Phrumsengla National Park	314.35	18,029.00	769.44	137,166.68
22	Royal Manas National Park	119.61	1,400.00	332.32	85,910.76
23	Sakteng Wildlife Sanctuary	643.31	25,894.09	109.32	29,592.71
24	Wangchuck Centennial National Park	118.59	720.00	0.00	0.00
<b>Total</b>		<b>38393.98</b>	<b>615,081.44</b>	<b>34634.54</b>	<b>8,202,222.60</b>

Table 10: Firewood allotted by DoFPS in 2021

SL no.	Offices	Rural		Commercial	
		Volume(m <sup>3</sup> )	Royalty (Nu.)	Volume(m <sup>3</sup> )	Royalty (Nu.)
1	Divisional Forest Office, Bumthang	1937.20	23,580.22	2780.61	32,647.54
2	Divisional Forest Office, Dagana	2377.61	52,297.89	1480.23	31,659.40
3	Divisional Forest Office, Gedu	664.00	15,000.00	7225.35	156,600.00
4	Divisional Forest Office, Mongar	1396.85	35,450.01	1294.93	27,010.88
5	Divisional Forest Office, Paro	1648.16	22,798.16	152.22	7,059.68
6	Divisional Forest Office, Pema Gatshel	304.69	7,380.00	152.44	4,374.45
7	Divisional Forest Office, Samdrup Jongkhar	76.00	1,710.00	931.80	25,756.46
8	Divisional Forest Office, Samtse	2454.66	70,839.50	1232.85	29,520.00
9	Divisional Forest Office, Sarpang	34.57	3,182.96	180.00	4,049.93
10	Divisional Forest Office, Thimphu	483.40	6,716.24	474.16	19,675.79
11	Divisional Forest Office, Trashigang	1567.08	33,939.51	1138.92	25,779.94
12	Divisional Forest Office, Tsirang	186.56	4,635.00	48.00	0.00

13	Divisional Forest Office, Wangdue	956.12	10,774.07	350.41	9,211.54
14	Divisional Forest Office, Zhemgang	126.00	5,418.36	54.62	3,987.66
15	Bumdeling Wildlife Sanctuary	1724.24	40,653.11	302.18	12,691.80
16	Jigme Dorji National Park	1088.17	20,273.16	1476.50	33,128.07
17	Jigme Khesar Strict Nature Reserve	1.36	880.00	0.03	180.00
18	Jigme Singye Wangchuck National Park	204.53	4,660.00	48.00	1,080.72
19	Jomotsangkha Wildlife Sanctuary	256.00	30,469.51	1280.00	28,800.00
20	Phibsoo Wildlife Sanctuary	131.06	4,824.00	0.00	0.00
21	Phrumsengla National Park	522.28	9,330.00	1094.00	24,000.00
22	Royal Manas National Park	0.00	0.00	215.14	4,848.46
23	Sakteng Wildlife Sanctuary	661.12	14,895.00	485.56	10,845.00
<b>Total</b>		18801.66	419,706.70	22397.95	492,907.32

*Table 11: Timber allotted for Dzong/Lhakhang construction or Renovation in 2021*

SL no.	Offices	Rural		Commercial	
		Volume(m3)	Royalty (Nu.)	Volume(m3)	Royalty (Nu.)
1	Divisional Forest Office, Bumthang	24.41	720.00	50.05	8,261.64
2	Divisional Forest Office, Dagana	0.00	0.00	233.71	35,518.87
3	Divisional Forest Office, Gedu	106.51	560.00	0.00	0.00
4	Divisional Forest Office, Mongar	86.53	2,444.21	84.45	48,317.18
5	Divisional Forest Office, Paro	298.10	8,420.80	0.15	6,700.00
6	Divisional Forest Office, Pema Gatshel	0.00	0.00	0.59	622.65
7	Divisional Forest Office, Samdrup Jongkhar	0.00	0.00	11.92	1,893.24
8	Divisional Forest Office, Samtse	0.00	0.00	0.00	0.00
9	Divisional Forest Office, Sarpang	0.00	0.00	0.00	0.00
10	Divisional Forest Office, Tsirang	14.69	2,141.70	0.00	0.00
11	Divisional Forest Office, Thimphu	0.00	0.00	324.78	108,609.90
12	Divisional Forest Office, Wangdue	0.59	42.00	0.00	0.00

13	Divisional Forest Office, Zhemgang	0.00	0.00	6.65	6,006.74
14	Jigme Dorji National Park	0.00	0.00	1775.38	463,465.52
15	Jigme Singye Wangchuck National Park	25.49	720.00	255.03	72,999.02
16	Phrumsengla National Park	0.00	0.00	108.35	17,450.76
<b>Total</b>		556.32	15,048.71	2851.06	769,845.52

## 4.2. Production of Timber from FMU and outside FMU

Table 12: Planned Timber from FMU

Sl.No.	Forest Management Unit (FMU)	Standing Vol achieved(m <sup>3</sup> )
1	Karshong	599.57
2	Dawathang	1642.64
3	Rodungla	870.33
4	Chendebji	1337.50
5	Khotokha	6308.26
6	Gogona	4717.93
7	Dongdechu	1346.85
8	Khaling Kharungla	15.04
9	Khengzore	3345.73
10	Zonglela	2186.62
11	Selela	2129.01
12	Lonchu	5047.37
13	Betikha	3280.52
14	Metapchhu	48.00
15	Lingmithang	2620.94
<b>Total</b>		35496.31

Table 13: Unplanned Timber production from FMUs and Adhoc Areas

Sl.No.	Timber extraction area	Standing Volume Achieved(m <sup>3</sup> )
1	Bark Beetle Infestation Batsaphu, Haa (Paro)	2,484.45
2	Bark Beetle Infestation Uruk, Bumthang (Bumthang)	6,235.52
3	Bluepine Dieback (Haa, Paro, Chukha, Thimphu)	16,736.70
4	Other adhoc from territorial divisions and Protected areas	20,599.01
5	Haa-East FMU	1,470.79
6	Gidakom FMU	2,612.61
7	Chamgang FMU	1,630.08
8	Korilla FMU	47.65
9	Rongmanchu FMU	10.68
<b>Total</b>		51,827.49

### 4.3. Non-wood Forest Products

Table 14: NWFPs Extracted and Royalty Realized

Product Name	Unit	Quantity	Royalty(N u.)
<i>Plumeria rubra</i>	Kilogram	1.00	16
<i>Rhodiola</i> spp.	Truckload	1.00	10
<i>Lycopodium clavatum</i> (Zalagadang)	Truckload	2.00	120
Wild yam	Kilogram	9.00	135
Leaves of BP/Fir	Truckload	2.00	66
	Bundle	10.00	40
Pine needle	Truckload	11.50	406
Saw dust	M <sup>3</sup>	16.00	80
Leaves of juniper (Incense)	Kilogram	6.00	12
	Truckload	17.00	680
<i>Bulbophyllum umbellatum</i>	Number	20.00	1,040
<i>Ficus</i> spp.	Bundle	20.00	80
<i>Piper pedicellatum</i>	Kilogram	20.00	400
Mushroom	Kilogram	27.00	540
Leave litters	Truckload	8.00	300
	Bundle	50.00	5
<i>Plectocomia himalayana</i> (Patsa)	Bundle	70.00	280
<i>Terminalia chebula</i>	Kilogram	80.00	400
Shilajit	Kilogram	100.00	800
<i>Calamus</i> spp	Truckload	2.00	200
	Number	100.00	200
<i>Neomicrocalamus andropogonifolius</i> (Ringshoo)	Bundle	118.00	12
<i>Cymbidium</i> spp ( Olatshey)	Bundle	140.00	5,960
<i>Rhododendron setosum</i>	Kilogram	143.00	292
Banana Leave	Number	150.00	730
<i>Picrorhiza</i> spp	Kilogram	200.00	1,300
<i>Rhododendron anthopogon</i>	Kilogram	280.00	560

<b><i>Hippophae rhamnoides</i> (Tarbu)</b>	Kilogram	300.00	1,200
<b><i>Piper longum</i> (Pipla)</b>	Kilogram	320.00	6,800
<b>Leaf moulds</b>	Truckload	467.00	27,110
<b><i>Zanthoxylum armatum</i></b>	Kilogram	672.00	288
<b><i>Pouzolzia sanguinea</i></b>	Kilogram	673.00	1,346
<b><i>Knema tenuinevia</i></b>	Kilogram	700.00	3,500
<b><i>Yushania mailing</i></b>	Bundle	5.00	40
	Number	770.00	126
<b>Cane shoot</b>	Number	71.00	184
	Bundle	386.00	1,568
	Truckload	801.00	300
<b><i>Thysanolaena latifolia</i> (Broom grass)</b>	Bundle	1408.00	4,224
<b><i>Astilbe rivularis</i> (Thonsergugay)</b>	Kilogram	4500.00	9,000
<b><i>Daphne</i> spp (Bark)</b>	Truckload	2.00	1,200
	Kilogram	6950.00	4,170
<b><i>Rhododendron</i> spp</b>	Truckload	12.00	450
	Kilogram	8667.00	17,334
<b><i>Pouzolzia</i> spp.</b>	Kilogram	13779.00	24,758
<b><i>Nardostachys jatamansi</i> (Pangpoe)</b>	Kilogram	14850.00	29,700
<b><i>Ophiocordyceps sinensis</i> (Cordyceps)</b>	Kilogram	36507.29 36	14,968,008
<b>Charcoal</b>	Truckload	464.00	23,200
	Kilogram	40300.00	8,060
<b><i>Rubia cordifolia</i></b>	Kilogram	44145.00	572,880
<b>Small bamboo</b>	Truckload	100.00	100
	Bundle	160.00	1,280
	Number	50928.00	33,807
<b>Large bamboo</b>	Bundle	10.00	80
	Truckload	103.00	230
	Number	65828.00	108,776
<b>Sand</b>	Cubic feet	1.00	40

	Number	1.00	40
	Tractor	39.00	780
	Truckload	31514.58	1,245,756
	M3	172268.58	859,738
<b>Clay soil</b>	Kilogram	2.00	4
	Truckload	341.89	23,516
<b>Stone</b>	Tractor	3.00	0
	M3	18839.00	94,310
	Truckload	30771.68	1,199,458
<b>Stone dust</b>	Truckload	155.00	8,610
	M3	1393.00	3,255
<b>Top soil</b>	M3	320.00	3,220
	Truckload	1091.00	72,996
<b>Color soil</b>	Truckload	453.00	18,400
	Kilogram	17100.00	34,200
<b>Stone chips</b>	Truckload	8284.50	278,020
	M3	10105.19	48,773
<b>Boulders</b>	Truckload	15109.12	585,855
	M3	585397.00	2,926,848
<b>Gravel</b>	Truckload	17806.50	703,840
	M3	165359.40	810,747
<b>River bed materials</b>	Truckload	116329.00	4,653,160
	M3	616212.00	3,081,060
<b>Total</b>			32,517,007

## 5. Forestry Services

### 5.1. Forestry Clearance

Table 15: Forestry Clearance (new or renewal) issued for the year 2021

Sl. No.	Office	Clearance Purposes(Area,Ha)								
		Exchange Land	Kidu Land	Land allotment	Lease Land	Road Construction	Substitute land	Transmission line	Others	Total
1	Bumdeling Wildlife Sanctuary	0.38	0.00	0.00	2.29	6.72	0.00	0.00	9.79	19.18
2	Divisional Forest Office, Bumthang	1.70	0.00	0.00	0.54	5.05	0.00	1.33	28.99	37.61
3	Divisional Forest Office, Dagana	9.45	0.00	0.00	7.22	13.24	0.59	5.32	76.99	112.82
4	Divisional Forest Office, Gedu	23.16	0.00	0.00	14.29	13.24	5.36	0.39	40.27	96.71
5	Jigme Dorji National Park	0.00	16.56	0.00	7.34	11.91	1.13	28.41	32.42	97.77
6	Jigme Khesar Strict Nature Reserve	0.00	0.00	0.00	0.00	280.00	0.00	0.00	0.04	280.04
7	Jigme Singye Wangchuck National Park	0.00	0.00	0.00	0.00	0.00	0.00	0.00	0.04	0.04
8	Jomotsangkha Wildlife Sanctuary	0.75	0.00	0.00	7.67	11.08	0.00	12.60	2.74	34.84
9	Divisional Forest Office, Mongar	4.63	0.00	0.00	9.27	68.58	1.16	21.91	29.62	135.17
10	Divisional Forest Office, Paro	15.92	0.00	0.00	5.70	55.41	27.66	13.28	2.78	120.75
11	Divisional Forest Office, Pema Gatshel	3.14	0.00	0.00	14.42	10.45	0.15	0.20	5.04	33.40
12	Phibsoo Wildlife Sanctuary	0.00	0.00	0.00	0.00	0.14	0.00	1.38	0.24	1.76
13	Phrumsengla National Park	0.00	0.00	0.00	0.00	6.82	0.00	0.00	3.61	10.43
14	Royal Manas National Park	0.54	0.00	0.00	8.20	62.85	1.68	48.68	553.80	675.75



<b>15</b>	Sakteng Wildlife Sanctuary	0.00	0.00	0.00	2.70	1.47	0.95	0.01	3.50	8.63
<b>16</b>	Divisional Forest Office, Samdrup Jongkhar	0.00	0.00	9.70	0.70	15.49	0.76	0.00	9.73	36.38
<b>17</b>	Divisional Forest Office, Samtse	32.42	0.00	0.00	2.04	557.9 6	0.06	1.74	26.12	620.34
<b>18</b>	Divisional Forest Office, Sarpang	0.00	0.00	0.00	2.67	36.92	24.07	2.96	46.88	113.50
<b>19</b>	Divisional Forest Office, Thimphu	0.58	0.00	0.00	1.97	3.86	0.17	0.00	7.80	14.38
<b>20</b>	Divisional Forest Office, Trashigang	5.06	0.00	0.00	2.22	6.28	0.60	2.01	10.74	26.91
<b>21</b>	Divisional Forest Office, Tsirang	5.88	0.00	0.00	7.42	23.41	1.66	0.35	6.62	45.34
<b>22</b>	Wangchuck Centennial National Park	0.00	0.00	0.00	0.00	9.18	0.00	0.00	0.29	9.47
<b>23</b>	Divisional Forest Office, Wangdue	6.36	0.01	0.00	4.74	21.06	1.44	19.73	399.13	452.48
<b>24</b>	Divisional Forest Office, Zhemgang	0.00	0.00	0.00	1.43	375.9 3	0.27	1.62	12.09	391.34
<b>Total</b>		109.97	16.57	9.70	102.83	1597. 05	67.71	161.92	1309.27	3375.0 3

## 5.2. Plantation

*Table 16: New Plantation Creation inside Community Forest for the year 2021*

Office	Location	Area (Ha)
Divisional Forest Office, Dagana	Khagochen CF	2.00
	Pungsi CF	2.00
	Balaygang CF	1.00
Divisional Forest Office, Sarpang	Namkhaling	1.00
Divisional Forest Office, Mongar	Zhungkhar CF	0.57
Divisional Forest Office, Wangdue Phodrang	Parikha Norbuling CF	1.50
	Derakchung Norbuling CF	2.61
Divisional Forest Office, Dagana	Khagochen CF	1.58
<b>Total</b>		<b>12.26</b>

*Table 17: Plantation Creation and Maintenance inside FMU*

Forest Management Units (FMU)	Plantation Creation planned (Ha)	Achievement (Ha)	Plantation Maintenance planned (Ha)	Achievement (Ha)
Chendebji	0.00	0.00	0.00	4.00
Lonchu	5.80	5.80	7.11	7.11
Korilla	1.78	1.78	37.38	25.36
Selela	1.57	1.57	19.34	19.34
Zonglela	5.50	5.50	37.20	37.20
Lingmithang	6.27	6.27	42.50	42.50
Karshong	0.00	0.00	0.00	0.00
Dongdechhu	4.60	5.40	18.52	10.82
Khaling Kharungla	8.63	8.63	24.03	24.03
Betekha	0.00	0.00	10.92	10.92
Chamgang	0.00	0.00	1.00	0.00
Rongmanchu	0.00	0.00	59.22	59.22
Haa East	34.08	21.22	61.97	27.71
Gidakom	5.00	5.00	18.54	18.07
Gogona	5.00	5.32	5.37	5.37
Khotokha	0.00	0.00	0.00	0.00
Dawathang	0.00	0.00	5.00	5.00
Rhodungla	0.00	0.00	0.00	0.00
<b>Total</b>	<b>78.23</b>	<b>66.49</b>	<b>348.1</b>	<b>296.65</b>

## 5.3. Revenue from Fees

Table 18: Revenue collected through different source for the year 2021

Sl. No.	Source	Revenue (Nu.)
1	Boating	163,800.00
2	Camping	1,320.00
3	Visitors fee	326,290.00
4	Filming	3,000.00
5	Export permit fee	624,900.00
6	Export service charge	14,270,333.00
7	Import permit fee	1,000.00
8	Permit Fee	337,622.00
9	Power chain registration	2,430.00
10	Power chain renewable	555.00
11	Saplings(wildlings)	5,647.00
12	Fishing fee	1,179,640.00
<b>Total</b>		<b>16,916,537.00</b>

## 5.4. Human Wildlife Conflict

Table 19: Crop Damages

Office	Total household affected	Wildlife	Crop Affected	Area affected (Acre)
<b>Jomotsangkha Wildlife Sanctuary</b>	22	Elephant	Betel nut	0.5
			Cardamom	0.1
			Maize	0.1
			Paddy	4.1
<b>Phibsoo Wildlife Sanctuary</b>	22	Elephant	Paddy	0.02
<b>Royal Manas National Park</b>		Elephant	Betel nut	3.3
			Paddy	0.5
<b>Samtse Divisional Forest Office</b>		Elephant	Maize	0.03
<b>Grand Total</b>				<b>8.65</b>

Table 20: Livestock Depredation

Office	Total household affected	Predator Type	Livestock Type	Kills (No.)
<b>Jigme Dorji National Park</b>	42	Snow leopard	Horse	1
			Mule	1
		Tiger	Jatsham	1
			Jersey	1
			Mule	1
<b>Jigme Singye Wangchuck National Park</b>	42	Tiger	Cow	1
			Local ox	1

		Ox	2	
<b>Jomotsangkha Wildlife Sanctuary</b>		Common leopard	Cattle	1
<b>Phibsoo Wildlife Sanctuary</b>		Common leopard	Goat	1
		Leoapard cat	Goat	1
		Wild boar	Goat	3
		Common leopard	Cattle	1
<b>Sakteng Wildlife Sanctuary</b>		Himalayan black bear	Chicken	1
			Pig	2
<b>Thimphu Divisional Forest Office</b>		Tiger	Cattle	1
			Cow	1
			Jersey	1
<b>Trashigang Divisional Forest Office</b>		Common leopard	Cattle	1
			Horse	1
		Leoapard cat	Cow	1
<b>Zhemgang Divisional Forest Office</b>		Tiger	Horse	1
			Jersey	1
<b>Grand Total</b>				27

## 6. Forest Offence

Table 21: Types of Forest Offence reported in 2021

Sl.No.	Offence	Incidences (No.)	Fine & compensation (Nu.)	Reward (Nu.)
1	Illegal fishing	210	1,212,500.00	1,194,249.94
2	Forest fire	9	66,625.00	-
3	Illegal Timber	670	10,467,079.46	1,293,659.47
4	Illegal NWFPs Harvesting	253	3,911,011.83	605,689.09
5	Illegal Timber Misuse	17	477,431.55	30,377.15
6	Land /encroachment	68	1,344,492.15	331,522.75
7	Wildlife Poaching	37	533,880.00	420,380.00
	<b>Total</b>	1264	18,013,019.99	3,875,878.40

## 7. Forest Fire

Table 22: Forest fire incidences reported for office wise in 2021

Office	Count of Cases (No.)	Fire Cause (Ha.)					
		Agriculture debris burning	Children	Electric short circuits	Roadside Workers	Smoker	Unknown
<b>Bumdeling Wildlife Sanctuary</b>	1						0.72
<b>Bumthang Divisional Forest Office</b>	2	1.69				3.57	
<b>Gedu Divisional Forest Office</b>	1						0.61
<b>Jomotsangkha Wildlife Sanctuary</b>	2						265.02
<b>Mongar Divisional Forest Office</b>	8			0.22		11.51	2430.60
<b>Paro Divisional Forest Office</b>	3	0.24			0.08		
<b>Phrumsengla National Park</b>	1						0.15
<b>Sakteng Wildlife Sanctuary</b>	2						2.42
<b>Thimphu Divisional Forest Office</b>	5	4.44	89.95				
<b>Trashigang Divisional Forest Office</b>	1						57.77
<b>Wangdue Divisional Forest Office</b>	15	1.67					1355.74
<b>Zhemgang Divisional Forest Office</b>	4	0.22					85.15
<b>Total</b>	45	8.26	89.95	0.22	0.08	15.08	4,198.18

Table 23: Forest fire incidences reported for Dzongkhag wise in 2021

Dzongkhag	Count of Cases(No.)	Fire Cause (Ha.)					
		Agriculture debris burning	Children	Electric short circuits	Roadside Workers	Smoker	Unknown
<b>Bumthang</b>	3	1.69				3.57	0.15
<b>Chukha</b>	1						0.61
<b>Haa</b>	1				0.08		
<b>Lhuntse</b>	2					11.51	252.90
<b>Mongar</b>	7			0.22			2178.42
<b>Paro</b>	2	0.24					
<b>Punakha</b>	6						664.61
<b>Samdrup Jongkhar</b>	2						265.02
<b>Thimphu</b>	5	4.44	89.95				
<b>Trashigang</b>	3						60.19
<b>Wangdue Phodrang</b>	9	1.67					691.13
<b>Zhemgang</b>	4	0.22					85.15
<b>Total</b>	45	8.26	89.95	0.22	0.08	15.08	4,198.18

## 8. Wood Based Industries

Table 24: Number of Wood-based Industries in Bhutan

Sl. No	Dzongkhag	Briquette manufacturing unit	Charcoal production unit	Handicraft	Incense production unit	Paper manufacturing unit	Particle board factory	Plywood factory	Stationary sawmill & furniture unit	Stationary sawmill & joinery unit	Stationary sawmill	Mobile sawmill	Integrated WBI	Furniture unit	Furniture unit & joinery Unit	Joinery unit	Grand Total
1	Bumthang			4	4						15	10		33			66
2	Chhukha			1	6		1	1		4	2		1	16	1	1	36
3	Dagana										3			10			13
4	Gasa																0
5	Haa										23			8			31
6	Lhuentse			1	3	1						1		9			15
7	Mongar		1	3	5							7		41		1	58
8	Paro			1	2						32			72			107
9	Pemagatshel										1			9			10
10	Punakha										1	2		9			12
11	Samdrupjongkhar				1						6	1		23			31
12	Samtse										5			7			12
13	Sarpang			1	1				1		6		1	20			30
14	Thimphu	2		1	3				1	2	10	1	3	8	1	3	35
15	Trashigang			7	3						2			16			28

16	Trashiyangtse			6											12			73
17	Trongsa			2						4					7			13
18	Tsirang	1		2						1					7			11
19	Wangdue			2	3					6					8			19
20	Zhemgang			1						2					12			15
<b>Total</b>		3	1	8	3	1	1	1	1	5	4	119	22	5	327	2	5	615
				7	1													

## 9. Human Resource

Table 25: Agency wise distribution of staffs under DoFPS

Parent Agency	Contract		Regular		Grand Total
	Male	Female	Male	Female	
<b>Ministry of Agriculture and Forests</b>	66	211	1159		1436
<b>Administration Service</b>	18	1	47		66
<b>Finance Service</b>		2			2
<b>EX &amp; ES Service</b>			5		5
<b>Technical Service</b>	48	208	1107		1363
<b>Ministry of Finance</b>		1	15		16
<b>Finance Service</b>		1	15		16
<b>Ministry of Information &amp; Communications</b>		1	1		2
<b>Technical Service</b>		1	1		2
<b>Royal Civil Service Commission</b>		16	12		28
<b>Administration Service</b>		16	12		28
<b>Total</b>	66	229	1187		1482

(Source : HRC, Zest, 2021)



Table 26: Technical staffs under DoFPS

Technical Service	Contract	Regular		Grand Total
	Male	Female	Male	
EX & ES Service			5	5
Technical Service	48	208	1107	1363
<b>Total</b>	48	208	1112	1368

(Source : HRC, Zest, 2021)

Table 27: Technical staffs under DoFPS

Designation	Contract Technical Staffs	Regular Technical Staffs		Grand Total
	Male	Female	Male	
Director			1	1
Specialist III			4	4
Chief Forestry Officer		2	24	26
Principal Forestry Officer		3	10	13
Dy. Chief Forestry Officer		6	35	41
Sr. Forestry Officer		9	48	57
Forestry Officer		13	52	65
Sr. Forest Ranger			10	10
Sr. Forest Ranger I		5	100	105
Sr. Forest Ranger II		8	93	101
Sr. Forest Ranger III		6	75	81
Forest Ranger I		17	220	237
Forest Ranger II		52	175	227
Sr. Forester		84	225	309
Forester		1	6	7
Asst. Forester	47		28	75
Forest Guard			1	1

<b>Grand Total</b>	47	206	1,107	1,360
--------------------	----	-----	-------	-------

(Source : HRC, Zest, 2021)

<b>Excluded under technical service:</b>	<b>8</b>
<b>Principal Meteorology/Hydrology Officer</b>	Livestock Health Supervisor III
<b>Dy. Chief Vet. Officer</b>	Sr. Vet. Officer
<b>Sr. Technician II</b>	Library Asst. I
<b>Technician II</b>	Basic Operator I

(Source : HRC, Zest, 2021)

*Table 28: Technical and Non Technical Staffs under DoFPS*

Sl.No.	Name of office	Position Title	Position Level	Employee Type			Grand Total
				Contract	Regular		
				Male	Female	Male	
1	Office of the Director	Director	EX3 A			1	1
		Specialist III	ES3 A			1	1
		Admin. Asst. I	S3 A		1		1
		Sr. Personal Asst. IV	S1 A		1		1
		Dispatcher I	O2 A			1	1
		Sr. Telephone Operator I	O1 A		1		1
		Driver	O1 A			1	1
		Driver I	O2 A			1	1

<b>2</b>	Forest Protection & Enforcement Division	Chief Forestry Officer	P1 A			1	1
		Principal Forestry Officer	P1 A		1		1
		Dy. Chief Forestry Officer	P2 A			3	3
		Sr. Forestry Officer	P3 A			1	1
		Forestry Officer	P4 A		2		2
		Sr. Forest Ranger II	SS3 A		1	1	2
		Sr. Forester	S3 A			1	1
		Driver	O1 A			3	3
<b>3</b>	Forest Resource Management Division	Chief Forestry Officer	P1 A			1	1
		Principal Forestry Officer	P1 A			1	1
		Dy. Chief Forestry Officer	P2 A		1	4	5
		Sr. Forestry Officer	P3 A		1	1	2

		Sr. Forest Ranger	SS1 A			1	1
		Sr. Forest Ranger II	SS3 A			1	1
		Forest Ranger II	S2 A		1		1
		Sr. Forester	S3 A			1	1
		Sr. Store Keeper IV	S1 A		1		1
		Driver	O1 A			1	1
<b>4</b>	Social Forestry & Extension Division	Chief Forestry Officer	P1 A			1	1
		Principal Forestry Officer	P1 A		1		1
		Dy. Chief Forestry Officer	P2 A		1	3	4
		Sr. Forestry Officer	P3 A			1	1
		Sr. Forest Ranger I	SS2 A			2	2
		Driver	O1 A			2	2
<b>5</b>	Nature Conservation Division	Chief Forestry Officer	P1 A			1	1

		Dy. Chief Forestry Officer	P2 A		3		3
		Dy. Chief Vet. Officer	P2 A		1		1
		Sr. Forestry Officer	P3 A		2	4	6
		Sr. Forest Ranger	SS1 A			1	1
		Sr. Forest Ranger I	SS2 A		1	3	4
		Sr. Forest Ranger II	SS3 A			1	1
		Livestock Health Supervisor III	S3 A			1	1
		Admin. Asst. II	S4 A			1	1
		Driver	O1 A			1	1
		Driver I	O2 A			1	1
<b>6</b>	Global Tiger Center, Gelephu	Principal Forestry Officer	P1 A			1	1
		Dy. Chief Forestry Officer	P2 A		1	1	2
		Sr. Forestry Officer	P3 A		1	1	2

		Forest Ranger II	S2 A			2	2
		Accounts Asst. IV	S1 A		1		1
		Driver	O1 A			1	1
7	Ugyen Wangchuck Institute for Conservation and Environment Research	Specialist III	ES3 A			3	3
		Dy. Chief Forestry Officer	P2 A			6	6
		Principal Forestry Officer	P1 A		1	3	4
		Sr. Forestry Officer	P3 A			7	7
		Forestry Officer	P4 A			1	1
		Sr. Forest Ranger I	SS2 A			8	8
		Sr. Forest Ranger II	SS3 A			1	1
		Sr. Forest Ranger III	SS4 A		1		1
		Forest Ranger I	S1 A			2	2
		Forest Ranger II	S2 A			1	1
		Sr. Forester	S3 A			2	2

		Asst. Forester	S5 C			1	1
		Sr. ICT Officer	P3 A		1	1	2
		Sr. Technician II	S1 A			1	1
		Sr. Dispatcher	O1 A			1	1
		Library Asst. I	S3 A		1		1
		Research Asst. III	S3 A			1	1
		Store Asst.	S5 A		1		1
		Accounts Asst. II	SS3 A			1	1
		Admin. Asst. I	S3 A		1		1
		Basic Operator I	O1 A			1	1
		Driver	O1 A			3	3
		Driver II	O3 A			1	1
<b>8</b>	Watershed Management Division	Chief Forestry Officer	P1 A		1		1
		Dy. Chief Forestry Officer	P2 A			2	2
		Principal Meteorology/Hydrology Officer	P1 A			1	1

		Sr. Forestry Officer	P3 A			3	3
		Sr. Forest Ranger III	SS4 A		1		1
		Driver	O1 A			1	1
		Driver III	O4 A	1			1
<b>9</b>	Bumdeling Wildlife Sanctuary	Chief Forestry Officer	P1 A			1	1
		Forestry Officer	P4 A			3	3
		Forest Ranger I	S1 A			3	3
		Forest Ranger II	S2 A		2	3	5
		Sr. Forest Ranger I	SS2 A			2	2
		Sr. Forest Ranger II	SS3 A			4	4
		Sr. Forest Ranger III	SS4 A			2	2
		Sr. Forester	S3 A		4	7	11
		Admin. Asst. I	S3 A		1		1
		Driver	O1 A			1	1



<b>10</b>	Jhomotshangkha Wildlife Sanctuary	Sr. Forestry Officer	P3 A			2	2
		Forestry Officer	P4 A			1	1
		Forest Ranger I	S1 A		1	5	6
		Forest Ranger II	S2 A		1	4	5
		Sr. Forest Ranger I	SS2 A			1	1
		Sr. Forest Ranger II	SS3 A			1	1
		Sr. Forest Ranger III	SS4 A			3	3
		Sr. Forester	S3 A		1	11	12
		Asst. Forester	S5 C			1	1
		Sr. Admin. Asst. IV	S1 A			1	1
		Accounts Asst. IV	S1 A			1	1
		Driver	O1 A			1	1
Driver III	O4 A	2			2		
<b>11</b>	Jigme Dorji National Park	Chief Forestry Officer	P1 A			1	1

		Sr. Forestry Officer	P3 A			2	2
		Forestry Officer	P4 A			1	1
		Sr. Forest Ranger II	SS3 A			4	4
		Sr. Forest Ranger III	SS4 A			4	4
		Forest Ranger I	S1 A			7	7
		Forest Ranger II	S2 A		3	10	13
		Sr. Forester	S3 A		4	11	15
		Asst. Forester	S5 B			1	1
			S5 C	2			2
		Forest Guard	O4 A			1	1
		Accounts Asst. I	SS2 A			1	1
		Accounts Asst. VI	S3 A			1	1
		Admin. Asst. I	S3 A			1	1
		Driver III	O4 A	1			1
<b>12</b>	Jigme Kheser Strict Nature Reserve	Chief Forestry Officer	P1 A			1	1

	Principal Forestry Officer	P1 A			1	1
	Dy. Chief Forestry Officer	P2 A			1	1
	Sr. Forestry Officer	P3 A			1	1
	Forestry Officer	P4 A			1	1
	Sr. Forest Ranger I	SS2 A			1	1
	Sr. Forest Ranger II	SS3 A			4	4
	Sr. Forest Ranger III	SS4 A			2	2
	Forest Ranger I	S1 A			3	3
	Forest Ranger II	S2 A			5	5
	Sr. Forester	S3 A		2	4	6
	Sr. Admin. Asst. IV	S1 A			1	1
	Driver	O1 A			1	1
	Driver III	O4 A	2			2

<b>13</b>	Jigme Singye Wangchuck National Park	Chief Forestry Officer	P1 A			1	1
		Sr. Forestry Officer	P3 A			1	1
		Forestry Officer	P4 A			2	2
		Sr. Forest Ranger I	SS2 A			5	5
		Sr. Forest Ranger II	SS3 A			2	2
		Sr. Forest Ranger III	SS4 A			2	2
		Forest Ranger I	S1 A			2	2
		Forest Ranger II	S2 A			8	8
		Sr. Forester	S3 A		1	6	7
		Admin. Asst. I	S3 A		1		1
		Driver	O1 A			1	1
<b>14</b>	Phibsoo Wildlife Sanctuary	Chief Forestry Officer	P1 A			1	1
		Dy. Chief Forestry Officer	P2 A			2	2

		Sr. Forestry Officer	P3 A			1	1
		Forestry Officer	P4 A		1	2	3
		Sr. Forest Ranger I	SS2 A			2	2
		Sr. Forest Ranger II	SS3 A			1	1
		Sr. Forest Ranger III	SS4 A			2	2
		Forest Ranger I	S1 A			3	3
		Forest Ranger II	S2 A			2	2
		Sr. Forester	S3 A			3	3
		Asst. Forester	S5 A			13	13
			S5 C	27			27
		Accounts Asst. I	SS2 A			1	1
		Admin. Asst. II	S4 A		1		1
		Driver III	O4 A	4			4
<b>15</b>	Phrumsengla National Park(PNP)	Chief Forestry Officer	P1 A			1	1
		Forestry Officer	P4 A			2	2

		Sr. Forest Ranger I	SS2 A			2	2
		Sr. Forest Ranger II	SS3 A			3	3
		Sr. Forest Ranger III	SS4 A			2	2
		Forest Ranger I	S1 A		1	6	7
		Forest Ranger II	S2 A			8	8
		Sr. Forester	S3 A			6	6
		Admin. Asst. I	S3 A		1		1
		Driver	O1 A			1	1
<b>16</b>	Royal Manas National Park	Chief Forestry Officer	P1 A			1	1
		Principal Forestry Officer	P1 A			1	1
		Forestry Officer	P4 A			3	3
		Sr. Forest Ranger	SS1 A			1	1
		Sr. Forest Ranger I	SS2 A			2	2
		Sr. Forest Ranger II	SS3 A			2	2

		Sr. Forest Ranger III	SS4 A			2	2
		Forest Ranger I	S1 A			3	3
		Forest Ranger II	S2 A			9	9
		Sr. Forester	S3 A		2	7	9
		Asst. Forester	S5 B			5	5
			S5 C	18			1
		Sr. Admin. Asst. IV	S1 A			1	1
		Accounts Asst. III	SS4 A			1	1
		Technician II	S4 A	1			1
		Driver	O1 A			2	2
		Driver III	O4 A	2			2
<b>17</b>	Sakten Wildlife Sanctuary	Chief Forestry Officer	P1 A			1	1
		Forestry Officer	P4 A			2	2
		Sr. Forest Ranger I	SS2 A			2	2
		Sr. Forest Ranger II	SS3 A			3	3

		Sr. Forest Ranger III	SS4 A			2	2
		Sr. Forest Ranger	SS1 A			1	1
		Forest Ranger I	S1 A			1	1
		Forest Ranger II	S2 A		1	2	3
		Sr. Forester	S3 A		2	9	11
		Sr. Admin. Asst. IV	S1 A			1	1
		Driver	O1 A			1	1
<b>18</b>	Wangchuck Centennial Park	Chief Forestry Officer	P1 A			1	1
		Dy. Chief Forestry Officer	P2 A			1	1
		Forestry Officer	P4 A			4	4
		Sr. Forest Ranger	SS1 A			1	1
		Sr. Forest Ranger I	SS2 A			5	5
		Sr. Forest Ranger II	SS3 A			3	3
		Forest Ranger I	S1 A			3	3
		Forest Ranger II	S2 A		1	9	10



		Sr. Forester	S3 A		3	6	9
		Admin. Asst. I	S3 A			1	1
		Driver I	O2 A			1	1
<b>19</b>	Divisional Forest Office,Bumthang	Chief Forestry Officer	P1 A			1	1
		Dy. Chief Forestry Officer	P2 A			1	1
		Forestry Officer	P4 A		2	1	3
		Sr. Forest Ranger I	SS2 A			6	6
		Sr. Forest Ranger II	SS3 A			6	6
		Sr. Forest Ranger III	SS4 A			1	1
		Forest Ranger I	S1 A			9	9
		Forest Ranger II	S2 A		6	3	9
		Sr. Forester	S3 A		8	18	26
		Admin. Asst. I	S3 A			1	1
		Asst. Forester	S5 A			1	1
		Driver	O1 A			2	2

<b>20</b>	Divisional Forest Office,Dagana	Dy. Chief Forestry Officer	P2 A			1	1
		Sr. Forestry Officer	P3 A			1	1
		Forestry Officer	P4 A		1	2	3
		Sr. Forest Ranger	SS1 A			1	1
		Sr. Forest Ranger I	SS2 A			3	3
		Sr. Forest Ranger II	SS3 A			1	1
		Sr. Forest Ranger III	SS4 A			4	4
		Forest Ranger I	S1 A			18	18
		Forest Ranger II	S2 A		3	3	6
		Sr. Forester	S3 A		2	8	10
		Sr. Admin. Asst. V	S2 A			1	1
		Driver III	O4 A	1			1
<b>21</b>	Divisional Forest Office,Gedu(Chukha)	Chief Forestry Officer	P1 A			1	1

		Sr. Forestry Officer	P3 A			2	2
		Forestry Officer	P4 A			3	3
		Sr. Forest Ranger	SS1 A			1	1
		Sr. Forest Ranger I	SS2 A			6	6
		Sr. Forest Ranger II	SS3 A			4	4
		Forest Ranger I	S1 A		3	11	14
		Forest Ranger II	S2 A		6	12	18
		Sr. Forester	S3 A		7	14	21
		Accounts Asst. III	SS4 A			1	1
		Admin. Asst. I	S3 A			1	1
		Driver	O1 A			1	1
		Driver III	O4 A	2			2
<b>22</b>	Divisional Forest Office, Mongar	Chief Forestry Officer	P1 A			1	1
		Principal Forestry Officer	P1 A			1	1

	Dy. Chief Forestry Officer	P2 A			1	1
	Sr. Forestry Officer	P3 A			1	1
	Forestry Officer	P4 A			6	6
	Sr. Forest Ranger I	SS2 A			6	6
	Sr. Forest Ranger II	SS3 A			8	8
	Sr. Forest Ranger III	SS4 A		1	4	5
	Forest Ranger I	S1 A		1	22	23
	Forest Ranger II	S2 A		1	7	8
	Sr. Forester	S3 A		5	13	18
	Forester	S4 A		1		1
	Asst. Forester	S5 B			1	1
		S5 C			1	1
	Accounts Asst. III	SS4 A			1	1
	Admin. Asst. I	S3 A		1		1
	Driver	O1 A			1	1

<b>23</b>	Divisional Forest Office,Paro	Chief Forestry Officer	P1 A			1	1
		Dy. Chief Forestry Officer	P2 A			2	2
		Sr. Forestry Officer	P3 A		1	3	4
		Forestry Officer	P4 A		1	3	4
		Sr. Forest Ranger I	SS2 A		1	10	11
		Sr. Forest Ranger II	SS3 A		2	6	8
		Sr. Forest Ranger III	SS4 A			6	6
		Forest Ranger I	S1 A			17	17
		Forest Ranger II	S2 A		2	7	9
		Sr. Forester	S3 A		9	8	17
		Admin. Asst. II	S4 A		1		1
Driver	O1 A			2	2		
<b>24</b>	Divisional Forest Office,Pema Gatshel	Dy. Chief Forestry Officer	P2 A			1	1

		Sr. Forestry Officer	P3 A			1	1
		Forestry Officer	P4 A			3	3
		Sr. Forest Ranger I	SS2 A			1	1
		Sr. Forest Ranger II	SS3 A			3	3
		Sr. Forest Ranger III	SS4 A			1	1
		Forest Ranger I	S1 A			9	9
		Forest Ranger II	S2 A			4	4
		Sr. Forester	S3 A		2	11	13
		Accounts Asst. IV	S1 A			1	1
		Admin. Asst. I	S3 A		1		1
		Driver I	O2 A			1	1
		Driver III	O4 A	1			1
<b>25</b>	Divisional Forest Office,S/Jongkhar	Chief Forestry Officer	P1 A			1	1
		Sr. Forestry Officer	P3 A			2	2

		Forestry Officer	P4 A		1	1	2
		Sr. Forest Ranger I	SS2 A		1	3	4
		Sr. Forest Ranger II	SS3 A		1	2	3
		Sr. Forest Ranger III	SS4 A			2	2
		Forest Ranger I	S1 A			7	7
		Forest Ranger II	S2 A			3	3
		Sr. Forester	S3 A		2	5	7
		Accounts Asst. III	SS4 A			1	1
		Admin. Asst. II	S4 A		1		1
		Driver	O1 A			1	1
		Driver I	O2 A			1	1
<b>26</b>	Divisional Forest Office,Samtse	Chief Forestry Officer	P1 A			1	1
		Dy. Chief Forestry Officer	P2 A			1	1
		Sr. Forestry Officer	P3 A			1	1

		Forestry Officer	P4 A			4	4
		Sr. Forest Ranger	SS1 A			1	1
		Sr. Forest Ranger I	SS2 A			4	4
		Sr. Forest Ranger II	SS3 A			4	4
		Sr. Forest Ranger III	SS4 A			4	4
		Forest Ranger I	S1 A			13	13
		Forest Ranger II	S2 A		3	11	14
		Sr. Forester	S3 A		7	14	21
		Asst. Forester	S5 C			2	2
		Sr. Admin. Asst. IV	S1 A		1		1
		Accounts Asst. III	SS4 A			1	1
		Driver	O1 A			2	2
<b>27</b>	Divisional Forest Office,Sarpang	Chief Forestry Officer	P1 A			1	1
		Principal Forestry Officer	P1 A			1	1



		Sr. Vet. Officer	P3 A			1	1
		Sr. Forestry Officer	P3 A		1	1	2
		Forestry Officer	P4 A			1	1
		Sr. Forest Ranger I	SS2 A		1	7	8
		Sr. Forest Ranger II	SS3 A			1	1
		Sr. Forest Ranger III	SS4 A			5	5
		Forest Ranger I	S1 A		2	8	10
		Forest Ranger II	S2 A		3	8	11
		Forester	S4 A			1	1
		Sr. Forester	S3 A		3	8	11
		Accounts Asst. III	SS4 A			1	1
		Sr. Admin. Asst. III	SS4 A		1		1
		Sr. Driver III	S5 A			1	1
		Driver	O1 A			1	1

<b>28</b>	Divisional Forest Office, Thimphu	Chief Forestry Officer	P1 A			1	1
		Dy. Chief Forestry Officer	P2 A			2	2
		Sr. Forestry Officer	P3 A			2	2
		Sr. Forest Ranger	SS1 A			1	1
		Sr. Forest Ranger I	SS2 A		1	6	7
		Sr. Forest Ranger II	SS3 A		2	4	6
		Sr. Forest Ranger III	SS4 A		2	3	5
		Sr. Forester	S3 A		10	9	19
		Forest Ranger I	S1 A		2	14	16
		Forest Ranger II	S2 A		6	5	11
		Admin. Asst. I	S3 A			1	1
		Driver	O1 A			2	2
		Driver III	O4 A	1			1
<b>29</b>	Divisional Forest Office, Trashigang	Chief Forestry Officer	P1 A			1	1

		Dy. Chief Forestry Officer	P2 A			1	1
		Sr. Forestry Officer	P3 A			4	4
		Forestry Officer	P4 A		3	2	5
		Sr. Forest Ranger I	SS2 A			4	4
		Sr. Forest Ranger II	SS3 A			7	7
		Sr. Forest Ranger III	SS4 A			9	9
		Forest Ranger I	S1 A		4	17	21
		Forest Ranger II	S2 A		4	18	22
		Sr. Forester	S3 A		2	18	20
		Asst. Forester	S5 B			1	1
		Accounts Asst. III	SS4 A			1	1
		Admin. Asst. I	S3 A			1	1
		Driver	O1 A			1	1
<b>30</b>	Divisional Forest Office, Tsirang	Chief Forestry Officer	P1 A		1		1

		Principal Forestry Officer	P1 A			1	1
		Sr. Forestry Officer	P3 A			1	1
		Forest Ranger I	S1 A		1	12	13
		Forest Ranger II	S2 A		2	7	9
		Sr. Forest Ranger	SS1 A			1	1
		Sr. Forest Ranger I	SS2 A			3	3
		Sr. Forest Ranger II	SS3 A			2	2
		Sr. Forest Ranger III	SS4 A		1	1	2
		Sr. Forester	S3 A		1	5	6
		Admin. Asst. I	S3 A		1		1
		Driver I	O2 A			1	1
<b>31</b>	Divisional Forest Office,Wangdue	Chief Forestry Officer	P1 A			1	1
		Dy. Chief Forestry Officer	P2 A			2	2

		Sr. Forestry Officer	P3 A		2	3	5
		Forestry Officer	P4 A		2	2	4
		Sr. Admin. Asst. III	SS4 A		1		1
		Sr. Forest Ranger I	SS2 A			5	5
		Sr. Forest Ranger II	SS3 A		2	11	13
		Sr. Forest Ranger III	SS4 A			6	6
		Forest Ranger I	S1 A		1	14	15
		Forest Ranger II	S2 A		6	17	23
		Sr. Forester	S3 A		6	12	18
		Forester	S4 A			3	3
			S4 B			1	1
		Accounts Asst. III	SS4 A			1	1
		Driver	O1 A			1	1
		Driver III	O4 A	1			1

<b>32</b>	Divisional Forest Office,Zhemgang	Chief Forestry Officer	P1 A			1	1
		Sr. Forestry Officer	P3 A		1	1	2
		Forestry Officer	P4 A			2	2
		Sr. Forest Ranger I	SS2 A			1	1
		Sr. Forest Ranger II	SS3 A			3	3
		Sr. Forest Ranger III	SS4 A			8	8
		Forest Ranger I	S1 A		1	11	12
		Forest Ranger II	S2 A		1	7	8
		Sr. Forester	S3 A		1	8	9
		Forester	S4 A			1	1
		Accounts Asst. IV	S1 A			1	1
		Admin. Asst. III	S5 A		1		1
		Driver	O1 A			1	1
<b>Grand Total</b>				<b>66</b>	<b>229</b>	<b>1187</b>	<b>1482</b>

*(Source: HRC, Zest, 2021)*



**Forest Resource Management  
Division  
Department of Forests and Park  
Services  
Ministry of Agriculture and  
Forests  
Thimphu : Bhutan  
Phone: +975-02-327723**